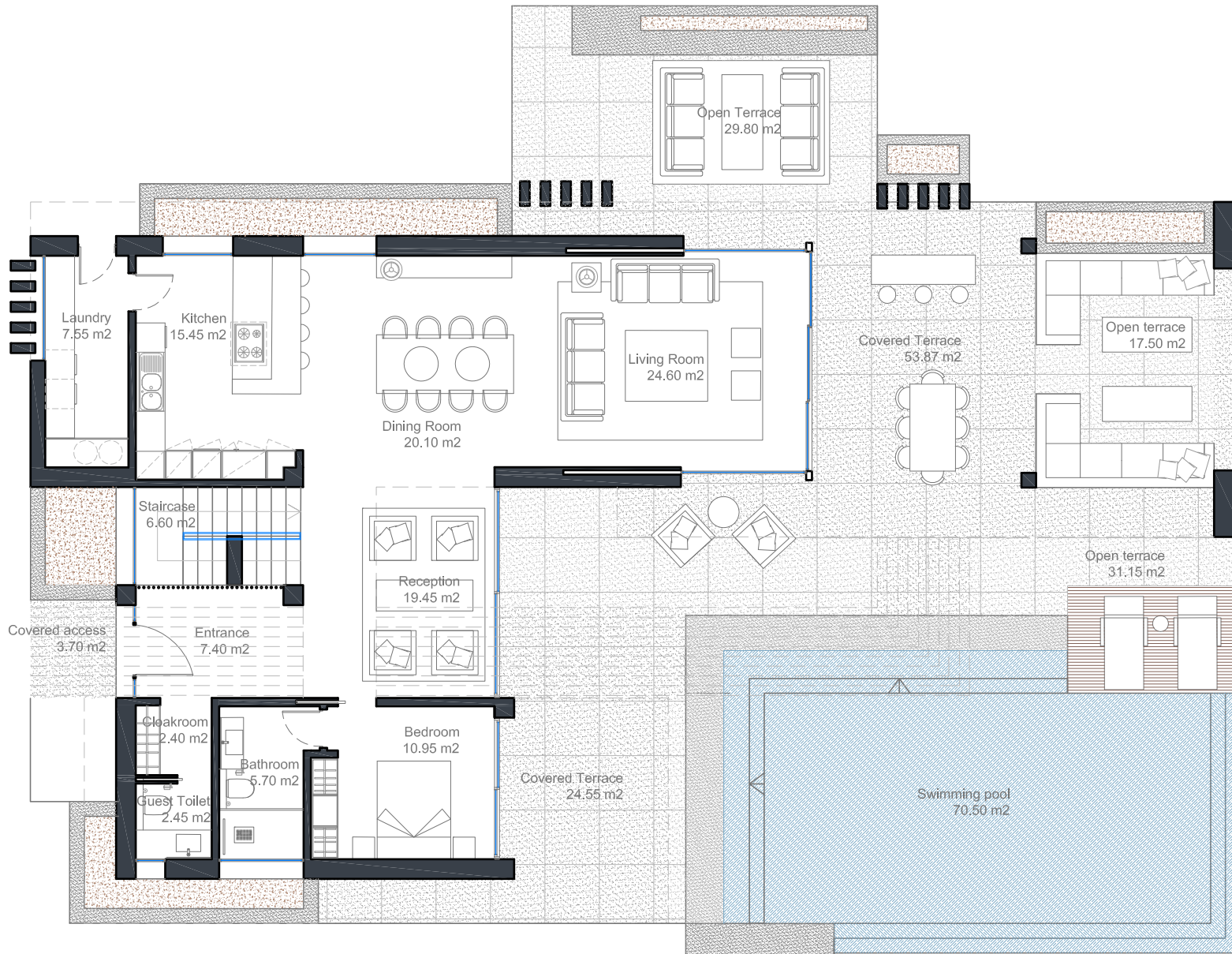


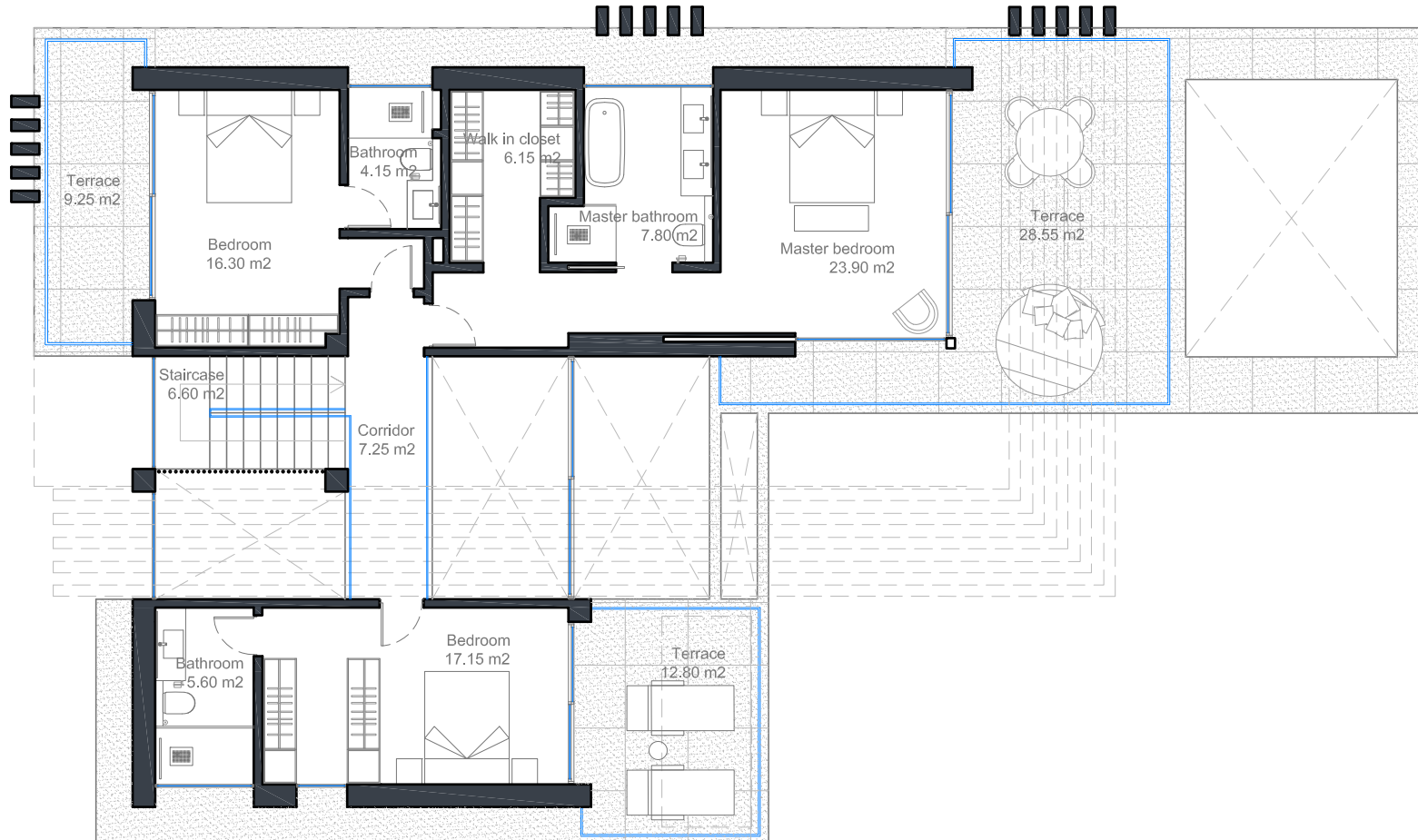
## MASTERPLAN TYPE A VILLA #46

---

Extensive and flat garden with  
Panoramic Sea Views  
400-510 m<sup>2</sup>



Built Living Area: 147 m<sup>2</sup>  
Covered Terraces: 83 m<sup>2</sup>  
Uncovered Terraces: 108 m<sup>2</sup>  
Swimming Pool: 70 m<sup>2</sup>



Built Living Area: 139 m<sup>2</sup>

Covered Terraces: 51 m<sup>2</sup>

