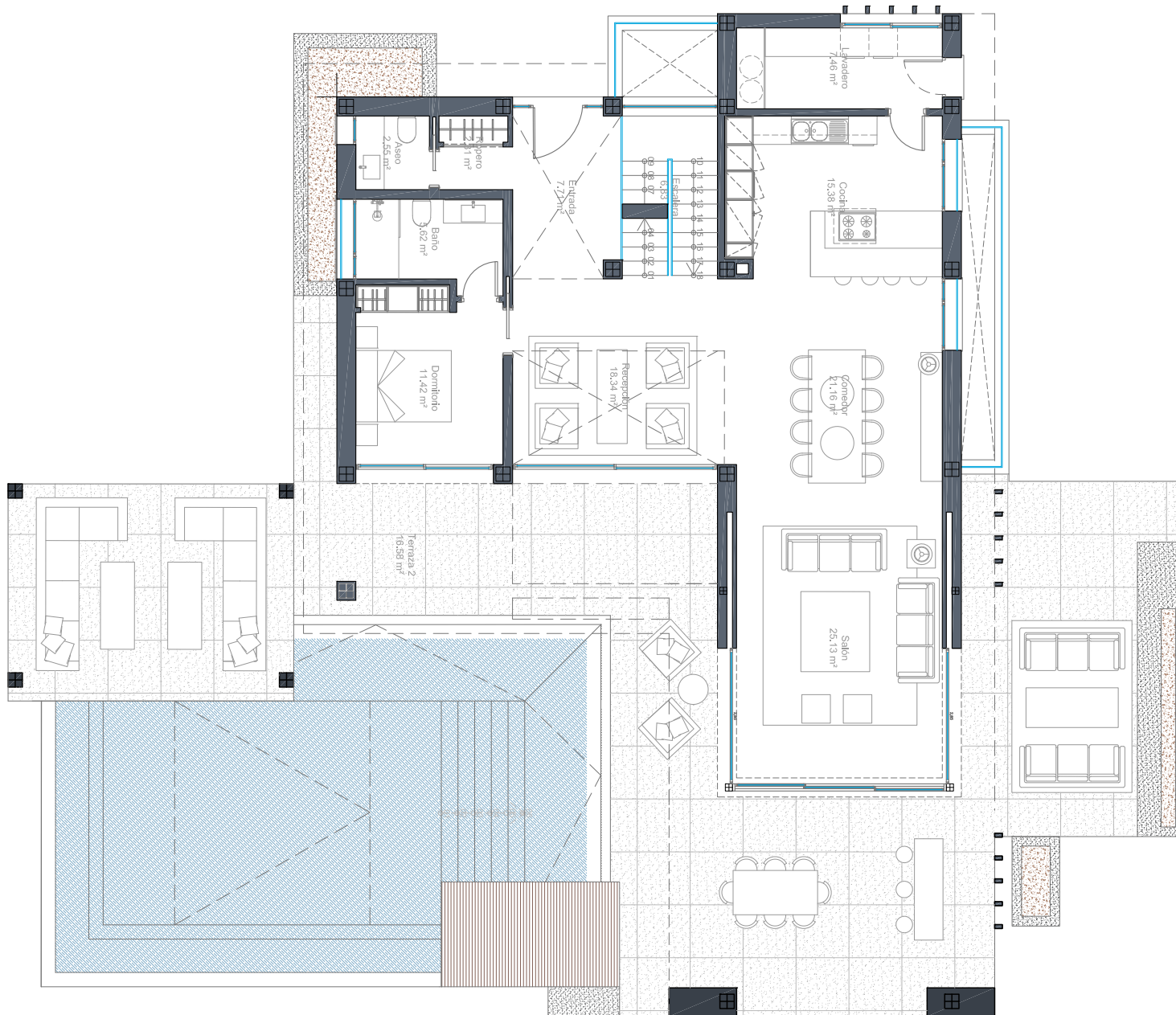


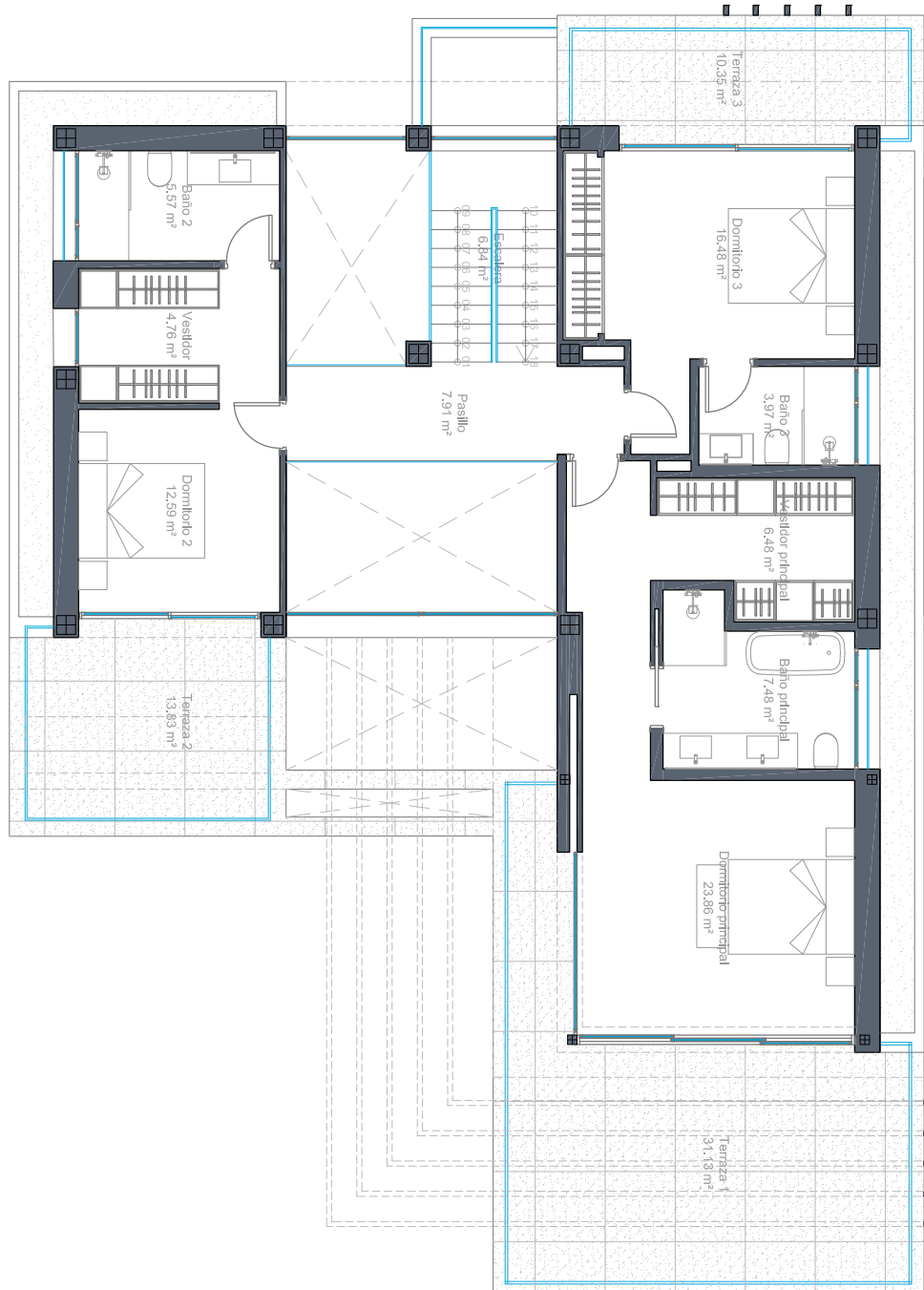


MASTERPLAN TYPE A VILLA #42

Extensive and flat garden with
Panoramic Sea Views
400-510 m²



Built Living Area: 147 m²
Covered Terraces: 83 m²
Uncovered Terraces: 108 m²
Swimming Pool: 70 m²



Built Living Area: 139 m²

Covered Terraces: 51 m²

