



2 Bed Apartment For Sale

€1,575,000

Puerto Banús, Costa del Sol

Ref: R3342049

Beachfront apartment really close to Puerto Banus, right in the promenade. This is an apartment with panoramic sea views and a big covered terrace from where you can relax hearing the waves in the beach, just 30 or 40 meters away. The apartment has 2 bedrooms, being the master a big one and including the en-suite bathroom. The other bedroom is also spacious but not as much. There is kitchen with utility room and nice window. This property also has a big underground parking plus a storage room of aprox 18 m2, with exterior window and an already built bathroom. Excellent property to update and use for private joy or as an investment. The community has a very nice pool and direct access on to the promenade. Cadastral measurements: apartment 132 m2, parking 13 m2, storage 16 m2, communal parts...

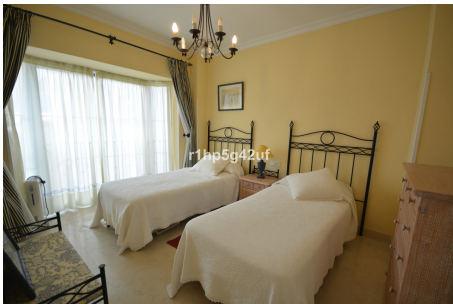
Telephone: +34 637 87 73 78

Email: info@banusimmo.com

La Reserva Del Aluczczuz, La Azalia 1 -1B, 29679, Benahavis

BanusImmo
MARBELLA

Gallery



Telephone: +34 637 87 73 78

Email: info@banusimmo.com

La Reserva Del Alcuzcuz, La Azalia 1 -1B, 29679, Benahavis

Banus Immo
MARBELLA

Property Description

Location: Puerto Banús, Costa del Sol, Spain

Beachfront apartment really close to Puerto Banus, right in the promenade. This is an apartment with panoramic sea views and a big covered terrace from where you can relax hearing the waves in the beach, just 30 or 40 meters away. The apartment has 2 bedrooms, being the master a big one and including the en-suite bathroom. The other bedroom is also spacious but not as much. There is kitchen with utility room and nice window. This property also has a big underground parking plus a storage room of aprox 18 m2, with exterior window and an already built bathroom. Excellent property to update and use for private joy or as an investment. The community has a very nice pool and direct access on to the promenade. Cadastral measurements: apartment 132 m2, parking 13 m2, storage 16 m2, communal parts 29 m2.

Telephone: +34 637 87 73 78

Email: info@banusimmo.com

La Reserva Del Alczucz, La Azalia 1 -1B, 29679, Benahavis

BanusImmo[®]
MARBELLA

Additional Info

For Sale	Beds: 2	Baths: 2
Type: Apartment	Area: 162 sq m	Garden
Pool	Setting: Beachfront	Suburban
Beachside	Port	Close To Port
Close To Shops	Close To Sea	Marina
Urbanisation	Front Line Beach Complex	Orientation: East
South East	South	Condition: Good
Fair	Renovation Required	Pool: Communal
Climate Control: Air Conditioning	Views: Sea	Beach
Port	Panoramic	Garden
Pool	Covered Terrace	Lift
Fitted Wardrobes	Near Transport	Private Terrace
Storage Room	Utility Room	Ensuite Bathroom
Access for people with reduced mobility	Marble Flooring	Double Glazing
24 Hour Reception	Day Care	Staff Accommodation

Fiber Optic	Furniture: Not Furnished	Kitchen: Fully Fitted
Garden: Communal	Security: Gated Complex	24 Hour Security
Parking: Underground	Garage	Covered
Private	Utilities: Electricity	Category: Bargain
Beachfront	Holiday Homes	Investment
Luxury	Resale	Built Area : 162 sq m

Telephone: +34 637 87 73 78

Email: info@banusimmo.com

La Reserva Del Alczucz, La Azalia 1 -1B, 29679, Benahavis