



2 Bed Apartment For Sale

€525,000

Puerto Banús, Costa del Sol

Ref: R3287899

A very bright 2 bed and 2 bath duplex apartment located in 2nd line of the Marina in Puerto Banus. The property boasts stunning sea views, offers plenty of sun as it is south facing. Offering a very large living room with an open American style fully fitted kitchen, in a perfect condition so you can move in straight away. It benefits from built-in wardrobes and a lot of storage space. These properties rent very well and also benefit from a full summer calendar! Could very easily be booked at least 40 weeks per year due to location a ideal holiday home or simply to be lived in all year round. ***It has a great 4 year rental history*** Walking distance to shops, restaurants and a stone's throw away from the beach.

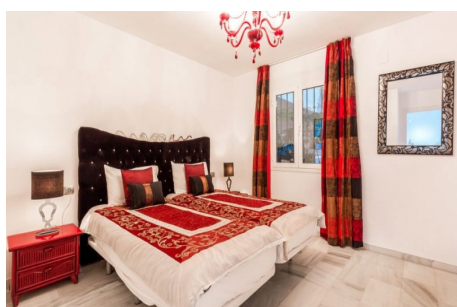
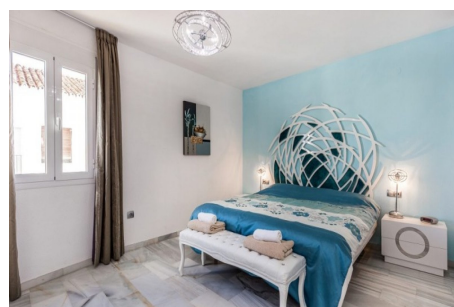
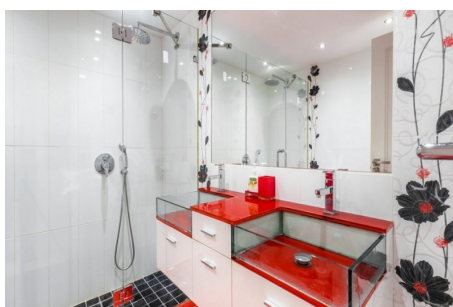
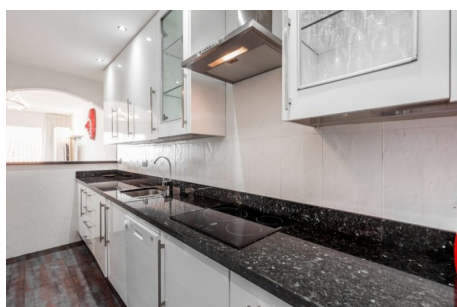
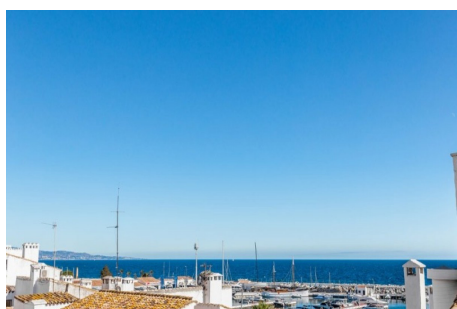
Telephone: +34 637 87 73 78

Email: info@banusimmo.com

La Reserva Del Alcuarcz, La Azalia 1 -1B, 29679, Benahavis

BanusImmo
MARBELLA

Gallery



Telephone: +34 637 87 73 78

Email: info@banusimmo.com

La Reserva Del Alcuarcz, La Azalia 1 -1B, 29679, Benahavis

Banus Immo
MARBELLA

Property Description

Location: Puerto Banús, Costa del Sol, Spain

A very bright 2 bed and 2 bath duplex apartment located in 2nd line of the Marina in Puerto Banus.

The property boasts stunning sea views, offers plenty of sun as it is south facing.

Offering a very large living room with an open American style fully fitted kitchen, in a perfect condition so you can move in straight away.

It benefits from built-in wardrobes and a lot of storage space.

These properties rent very well and also benefit from a full summer calendar!

Could very easily be booked at least 40 weeks per year due to location a ideal holiday home or simply to be lived in all year round.

It has a great 4 year rental history

Walking distance to shops, restaurants and a stone's throw away from the beach.

Additional Info

For Sale	Beds: 2	Baths: 2
Type: Apartment	Area: 208 sq m	Setting: Close To Port
Close To Shops	Close To Sea	Condition: Excellent
Climate Control: Air Conditioning	Views: Sea	Covered Terrace
Fitted Wardrobes	Near Transport	Private Terrace
WiFi	Ensuite Bathroom	Double Glazing
Furniture: Optional	Kitchen: Fully Fitted	Category: Investment
Resale	Built Area : 208 sq m	