



## 2 Bed Apartment To Rent

**€2,000/mth.**

**Benahavís, Costa del Sol**

**Ref: R4855003**

Discover your dream living space in the prestigious luxury urbanization! This spacious ground apartment offers the epitome of comfort and convenience, perfect for those seeking upscale living. \* Key Features: Spacious Living: Enjoy a large living room, ideal for entertaining guests or relaxing with family. Modern Kitchen: Fully equipped kitchen with brand new appliances, making cooking a delight. Comfortable Bedrooms: 2 bedrooms provide ample space for rest and relaxation. Private Terrace & Garden: Step out onto your own terrace overlooking a private garden, perfect for enjoying the outdoors. Parking & Storage: Includes 2 parking spaces and a convenient 8 m2 storage room.

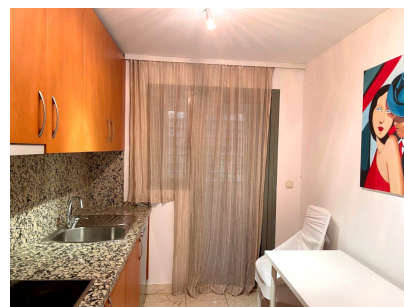
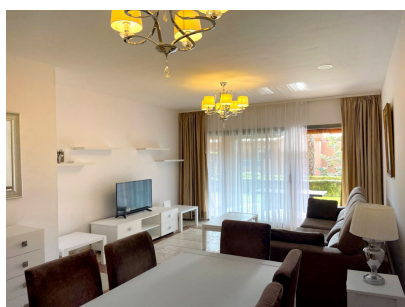
Telephone: +34 637 87 73 78

Email: [info@banusimmo.com](mailto:info@banusimmo.com)

La Reserva Del Alczucuz, La Azalia 1 -1B, 29679, Benahavis

*Banus Immo*  
MARBELLA

# Gallery



Telephone: +34 637 87 73 78

Email: [info@banusimmo.com](mailto:info@banusimmo.com)

La Reserva Del Alcuzeuz, La Azalia 1 -1B, 29679, Benahavis

*Banus Immo*  
MARBELLA

# Property Description

**Location:** Benahavís, Costa del Sol, Spain

Discover your dream living space in the prestigious luxury urbanization! This spacious ground apartment offers the epitome of comfort and convenience, perfect for those seeking upscale living.

\* Key Features:

**Spacious Living:** Enjoy a large living room, ideal for entertaining guests or relaxing with family.

**Modern Kitchen:** Fully equipped kitchen with brand new appliances, making cooking a delight.

**Comfortable Bedrooms:** 2 bedrooms provide ample space for rest and relaxation.

**Private Terrace & Garden:** Step out onto your own terrace overlooking a private garden, perfect for enjoying the outdoors.

**Parking & Storage:** Includes 2 parking spaces and a convenient 8 m<sup>2</sup> storage room.

# Additional Info

For Rent	Beds: 2	Baths: 2
Type: Apartment	Area: 128 sq m	Garden
Pool	Setting: Close To Shops	Close To Schools
Urbanisation	Orientation: South	South West
Condition: Excellent	Pool: Communal	Climate Control: Air Conditioning
Views: Garden	Covered Terrace	Gym
Furniture: Fully Furnished	Kitchen: Fully Fitted	Garden: Communal
Security: Gated Complex	Parking: Underground	Built Area : 128 sq m