

## 2 Bed Penthouse For Sale

**€815,000**

**Nueva Andalucía, Costa del Sol**

**Ref: R4846435**

Spectacular penthouse with panoramic sea and mountain views in the heart of Nueva Andalucía, Marbella. Property totally refurbished and ready to move in. Duplex apartment with 2 bedrooms, 2 bathrooms and 1 toilet. Spacious living-dining room with open plan fully fitted kitchen. Spectacular solarium with panoramic views where you can enjoy the wonderful climate that the Costa del Sol offers all year round. The property has a private parking space included in the price. Small urbanisation of very few properties surrounded by trees and plants, very well maintained. It has a communal swimming pool for adults and another one for children. Unbeatable location. It is walking distance to all kind of services. Puerto Banus and the beach are only 15 minutes walking distance. Unique opportunity...

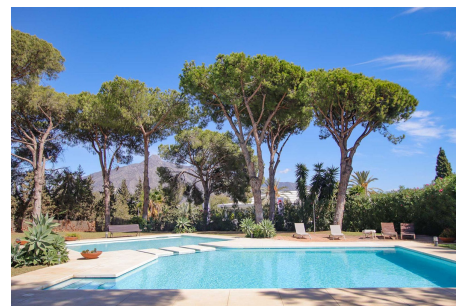
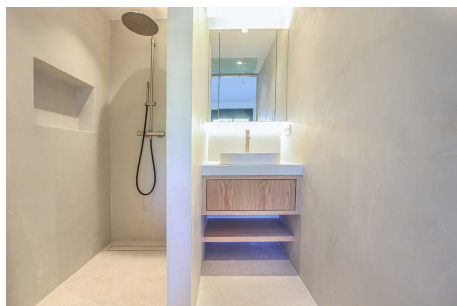
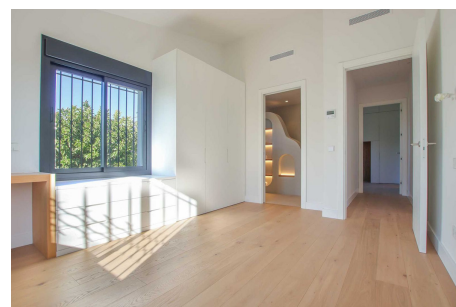
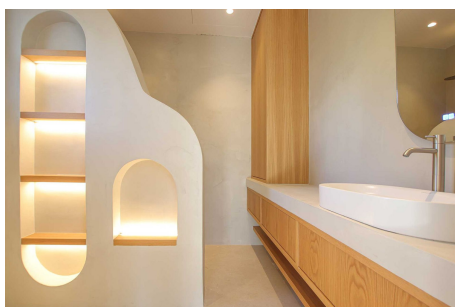
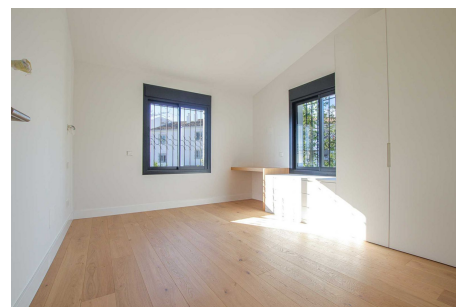
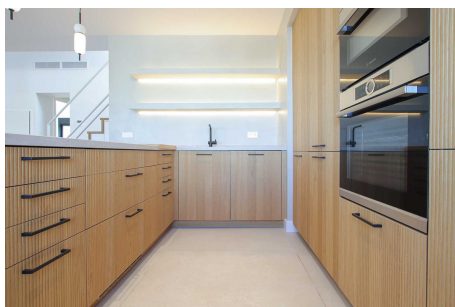
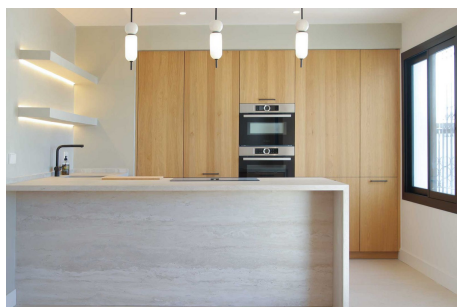
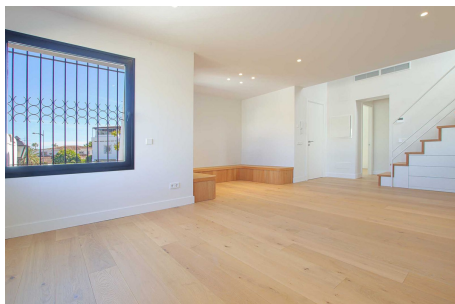
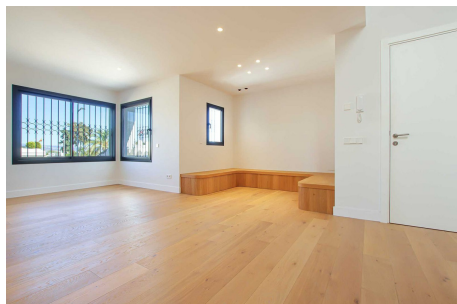
Telephone: +34 637 87 73 78

Email: [info@banusimmo.com](mailto:info@banusimmo.com)

La Reserva Del Alczucuz, La Azalia 1 -1B, 29679, Benahavis

*BanusImmo*  
MARBELLA

# Gallery



Telephone: +34 637 87 73 78

Email: [info@banusimmo.com](mailto:info@banusimmo.com)

La Reserva Del Alucuz, La Azalia 1 -1B, 29679, Benahavis

*Banus Immo*  
MARBELLA

# Property Description

**Location:** Nueva Andalucía, Costa del Sol, Spain

Spectacular penthouse with panoramic sea and mountain views in the heart of Nueva Andalucía, Marbella.

Property totally refurbished and ready to move in.

Duplex apartment with 2 bedrooms, 2 bathrooms and 1 toilet. Spacious living-dining room with open plan fully fitted kitchen. Spectacular solarium with panoramic views where you can enjoy the wonderful climate that the Costa del Sol offers all year round.

The property has a private parking space included in the price.

Small urbanisation of very few properties surrounded by trees and plants, very well maintained. It has a communal swimming pool for adults and another one for children.

Unbeatable location. It is walking distance to all kind of services. Puerto Banus and the beach are only 15 minutes walking distance.

Unique opportunity!

# Additional Info

For Sale	Beds: 2	Baths: 2.5
Type: Penthouse	Area: 110 sq m	Garden
Pool	Setting: Close To Golf	Close To Port
Close To Shops	Close To Sea	Close To Town
Close To Schools	Close To Forest	Close To Marina
Urbanisation	Orientation: South East	Condition: Excellent
Recently Renovated	Recently Refurbished	Pool: Communal
Children`s Pool	Climate Control: Air Conditioning	Hot A/C
Cold A/C	Views: Sea	Mountain
Panoramic	Garden	Urban
Street	Covered Terrace	Fitted Wardrobes
Near Transport	Private Terrace	Satellite TV
WiFi	Ensuite Bathroom	Double Glazing
Fiber Optic	Furniture: Not Furnished	Kitchen: Fully Fitted
Garden: Communal	Security: Gated Complex	Entry Phone

Parking: Street

Private

Utilities: Electricity

Drinkable Water

Category: Golf

Holiday Homes

Investment

Luxury

Contemporary

Built Area : 110 sq m

Telephone: +34 637 87 73 78

Email: [info@banusimmo.com](mailto:info@banusimmo.com)

La Reserva Del Alczucuz, La Azalia 1 -1B, 29679, Benahavis

*Banus Immo*  
MARBELLA