

## 3 Bed Apartment To Rent

**€2,750/mth.**

**Nueva Andalucía, Costa del Sol**

**Ref: R4846495**

Welcome to this elegant and modern apartment located in Nueva Andalucía. This is the perfect apartment for those seeking modern living with close access to local amenities and a short drive to Puerto Banús and Marbella. With three bedrooms, all with built-in wardrobes, and two bathrooms, this property offers the perfect combination of comfort and functionality. The apartment is fully equipped with everything you need and features high-end appliances. The price includes a parking space and a storage room. On the rooftop of the building, you will find a fantastic communal pool with wonderful views of the surroundings.

Telephone: +34 637 87 73 78

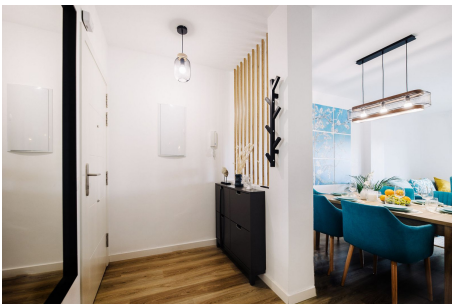
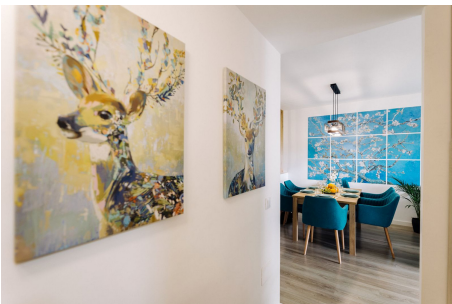
Email: [info@banusimmo.com](mailto:info@banusimmo.com)

La Reserva Del Alczucuz, La Azalia 1 -1B, 29679, Benahavis

*Banus Immo*  
MARBELLA



# Gallery



Telephone: +34 637 87 73 78

Email: [info@banusimmo.com](mailto:info@banusimmo.com)

La Reserva Del Alcuizcuz, La Azalia 1 -1B, 29679, Benahavis

*Banus Immo*  
MARBELLA

# Property Description

**Location:** Nueva Andalucía, Costa del Sol, Spain

Welcome to this elegant and modern apartment located in Nueva Andalucía.

This is the perfect apartment for those seeking modern living with close access to local amenities and a short drive to Puerto Banús and Marbella.

With three bedrooms, all with built-in wardrobes, and two bathrooms, this property offers the perfect combination of comfort and functionality. The apartment is fully equipped with everything you need and features high-end appliances.

The price includes a parking space and a storage room. On the rooftop of the building, you will find a fantastic communal pool with wonderful views of the surroundings.

# Additional Info

For Rent	Beds: 3	Baths: 2
Type: Apartment	Area: 120 sq m	Garden
Pool	Setting: Town	Commercial Area
Close To Shops	Close To Schools	Orientation: East
South East	South	Condition: Excellent
Pool: Communal	Climate Control: Air Conditioning	Views: Mountain
Garden	Covered Terrace	Lift
Private Terrace	Utility Room	Ensuite Bathroom
Fiber Optic	Furniture: Fully Furnished	Kitchen: Fully Fitted
Garden: Communal	Parking: Underground	Built Area : 120 sq m