

## 2 Bed Apartment To Rent

**€3,000/mth.**

**Atalaya, Costa del Sol**

**Ref: R4821754**

LONG TERM RENTAL available from the 25th of September 2024 for 12 months located in Atalaya. This property consists of: - 2 bed - 2 bath - Fully furnished - AC/ Heating - Laundry room - Private terrace - 2 parking spaces Las Terrazas de Atalaya is a complex of 56 apartments located in the heart of Atalaya golf course, confluence of Benahavis, Estepona and Marbella. It is located just two minutes walk from the new Atalaya Bilingual School, a major supermarket as well as Atalaya golf and country club. 1km from the beach and at the foot of the countryside golf course in Atalaya Alta. Just a few minutes by car you can enjoy a wide range of restaurants, and the charm of a typical Andalusian town and gastronomic reference such as Benahavis. 5 minutes from San Pedro de Alcántara and its new...

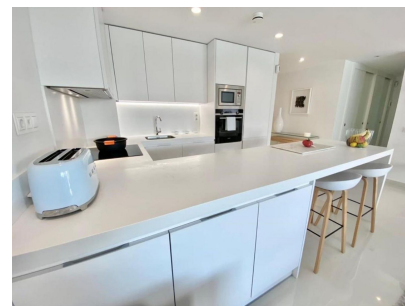
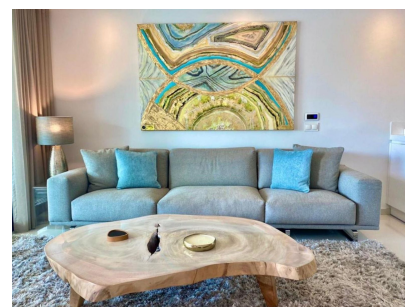
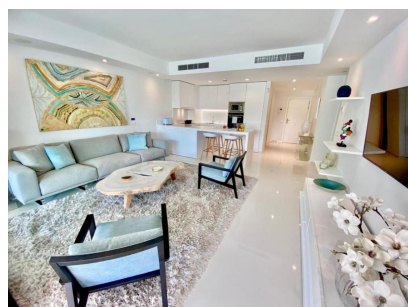
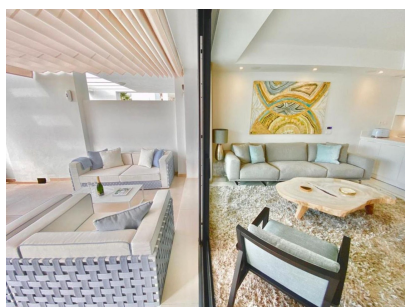
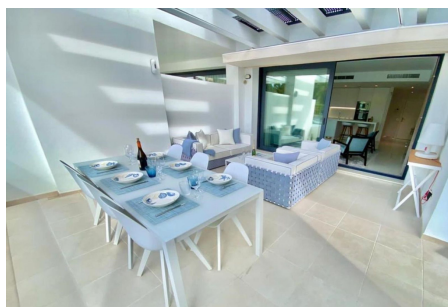
Telephone: +34 637 87 73 78

Email: [info@banusimmo.com](mailto:info@banusimmo.com)

La Reserva Del Alcuizcuz, La Azalia 1 -1B, 29679, Benahavis

*Banus Immo*  
MARBELLA

# Gallery



Telephone: +34 637 87 73 78

Email: [info@banusimmo.com](mailto:info@banusimmo.com)

La Reserva Del Aluzcuz, La Azalia 1 -1B, 29679, Benahavis

*Banus Immo*  
MARBELLA

# Property Description

**Location:** Atalaya, Costa del Sol, Spain

LONG TERM RENTAL available from the 25th of September 2024 for 12 months located in Atalaya.

This property consists of:

- 2 bed
- 2 bath
- Fully furnished
- AC/ Heating
- Laundry room
- Private terrace
- 2 parking spaces

Las Terrazas de Atalaya is a complex of 56 apartments located in the heart of Atalaya golf course, confluence of Benahavis, Estepona and Marbella. It is located just two minutes walk from the new Atalaya Bilingual School, a major supermarket as well as Atalaya golf and country club. 1km from the beach and at the foot of the countryside golf course in Atalaya Alta.

Just a few minutes by car you can enjoy a wide range of restaurants, and the charm of a typical Andalusian town and gastronomic reference such as Benahavís. 5 minutes from San Pedro de Alcántara and its new and spectacular Gran Boulevard. 10 minutes from Puerto Banús, 15 minutes from Marbella and about 10 minutes from Estepona.

And for golf lovers, just five minutes away you will enjoy an offer of more than 9 top quality Golf Courses: Atalaya Golf & Country Club, Guadalmina, El Paraiso, El Campanario, Marbella Club Golf Resort, Los Arqueros, La Quinta , Higueral Golf, Los Flamings, etc.

# Additional Info

For Rent	Beds: 2	Baths: 2
Type: Apartment	Area: 210 sq m	Garden
Pool	Setting: Close To Golf	Close To Schools
Urbanisation	Orientation: South	Condition: Excellent
Pool: Communal	Climate Control: Air Conditioning	Central Heating
Views: Mountain	Garden	Pool
Private Terrace	Storage Room	Utility Room
Furniture: Fully Furnished	Kitchen: Fully Fitted	Garden: Communal
Security: Gated Complex	Parking: Garage	Built Area : 210 sq m

Telephone: +34 637 87 73 78

Email: [info@banusimmo.com](mailto:info@banusimmo.com)

La Reserva Del Alcuizcuz, La Azalia 1 -1B, 29679, Benahavis

*Banus Immo*  
MARBELLA