



3 Bed Townhouse For Sale

€1,200,000

San Pedro de Alcántara, Costa del Sol

Ref: R4808389

Large corner townhouse in one of the best urbanizations of San Pedro Playa. Family friendly and very quiet area, just a few steps from the promenade, the town and all necessary services, including schools and sports centers. You can also easily reach Puerto Banus through the promenade. The house is distributed on two floors. On the first floor there is a spacious living-dining room, a fitted kitchen with utility room, a large glazed terrace and a toilet with window. On the upper floor there are three large bedrooms with two bathrooms, and from the master bedroom you can access a large terrace. In addition, the house has a large perimeter garden with space to build a swimming pool, on a plot of 300 m². It also has a garage with capacity for two cars, expandable to more if desired. The ho...

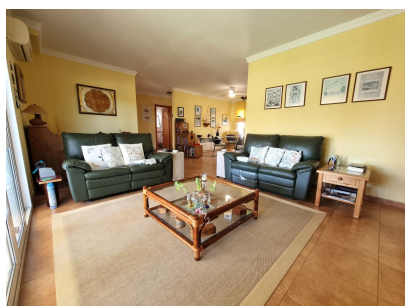
Telephone: +34 637 87 73 78

Email: info@banusimmo.com

La Reserva Del Aluczcuz, La Azalia 1 -1B, 29679, Benahavis

Banus Immo
MARBELLA

Gallery



Telephone: +34 637 87 73 78

Email: info@banusimmo.com

La Reserva Del Alczuz, La Azalia 1 -1B, 29679, Benahavis

Banus Immo
MARBELLA

Property Description

Location: San Pedro de Alcántara, Costa del Sol, Spain

Large corner townhouse in one of the best urbanizations of San Pedro Playa. Family friendly and very quiet area, just a few steps from the promenade, the town and all necessary services, including schools and sports centers. You can also easily reach Puerto Banus through the promenade.

The house is distributed on two floors. On the first floor there is a spacious living-dining room, a fitted kitchen with utility room, a large glazed terrace and a toilet with window.

On the upper floor there are three large bedrooms with two bathrooms, and from the master bedroom you can access a large terrace. In addition, the house has a large perimeter garden with space to build a swimming pool, on a plot of 300 m².

It also has a garage with capacity for two cars, expandable to more if desired. The house has solar panels located on the large terrace on the second floor.

Additional Info

For Sale	Beds: 3	Baths: 3
Type: Townhouse	Area: 210 sq m	Land Area: 300 sq m
Garden	Setting: Close To Sea	Close To Schools
Urbanisation	Orientation: East	South
Condition: Excellent	Climate Control: Fireplace	Fitted Wardrobes
Private Terrace	Utility Room	Kitchen: Fully Fitted
Garden: Private	Parking: More Than One	Built Area : 210 sq m
Land Size : 300 sq m		