



## 5 Bed Villa (Detached) For Sale

# €1,950,000

Las Chapas, Costa del Sol

Ref: R2723402

Luxury second line beach villa situated just a few minutes driving from Marbella or Puerto Banús. The house built in two levels plus a basement. Enjoys 5 bedrooms with 5 bathrooms, one of them used as a maid's quarter. Large living- dining room with fireplace and direct access to a sunny porch with views over the garden and private swimming pool. Fully fitted kitchen, TV room. Basement for several cars, gym or TV room. Partial sea views from upper terrace. There are two similar villas for sale at the same price.

Telephone: +34 637 87 73 78

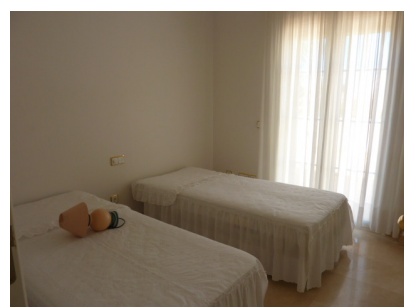
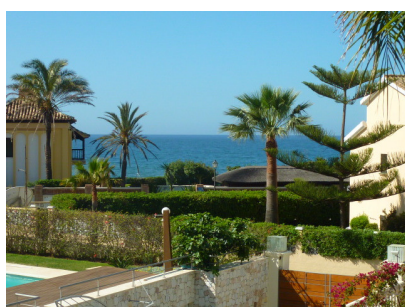
Email: [info@banusimmo.com](mailto:info@banusimmo.com)

La Reserva Del Alcuzcuz, La Azalia 1 -1B, 29679, Benahavis

*BanusImmo*  
MARBELLA



# Gallery



Telephone: +34 637 87 73 78

Email: [info@banusimmo.com](mailto:info@banusimmo.com)

La Reserva Del Alcuizcuz, La Azalia 1 -1B, 29679, Benahavis

*Banus Immo*  
MARBELLA

# Property Description

**Location:** Las Chapas, Costa del Sol, Spain

Luxury second line beach villa situated just a few minutes driving from Marbella or Puerto Banús. The house built in two levels plus a basement. Enjoys 5 bedrooms with 5 bathrooms, one of them used as a maid's quarter. Large living- dining room with fireplace and direct access to a sunny porch with views over the garden and private swimming pool. Fully fitted kitchen, TV room. Basement for several cars, gym or TV room. Partial sea views from upper terrace. There are two similar villas for sale at the same price.

Telephone: +34 637 87 73 78

Email: [info@banusimmo.com](mailto:info@banusimmo.com)

La Reserva Del Alcuarcz, La Azalia 1 -1B, 29679, Benahavis

*Banus Immo*  
MARBELLA

# Additional Info

For Sale	Beds: 5	Baths: 5
Type: Villa (Detached)	Area: 650 sq m	Land Area: 1500 sq m
Garden	Pool	Setting: Beachfront
Orientation: South	West	Pool: Private
Climate Control: Hot A/C	Cold A/C	Fireplace
Views: Sea	Garden	Pool
Marble Flooring	Furniture: Not Furnished	Kitchen: Fully Fitted
Garden: Private	Parking: Garage	More Than One
Built Area : 650 sq m	Land Size : 1500 sq m	