



Plot For Sale

The Golden Mile, Costa del Sol

€3,000,000

Ref: R4806724

Plot with building licence in Urbanization Rocio de Nagueles, strategically located in the heart of Marbella's Golden Mile, offering wonderful views of both the sea and the mountains. It has direct access from the Mediterranean Highway or A7, placing it just 5 minutes by car from the center of Marbella and Puerto Banús, as well as from the best schools such as The British International School of Marbella, and golf courses located on the Costa del Sol. All of this makes it an ideal place for both relaxation in its idyllic surroundings and for enjoying Marbella's leisure activities. Area: 1,850 m². Buildability: 481 m². Classification: UE-4 (Single-Family). You can build 2 floors plus a basement. Classification: UE-4 Area: 1,850.00 m² Buildability: 0.26 (m²t / m²s) Buildability...

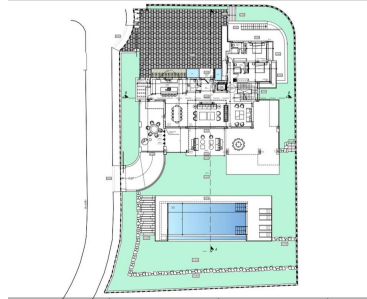
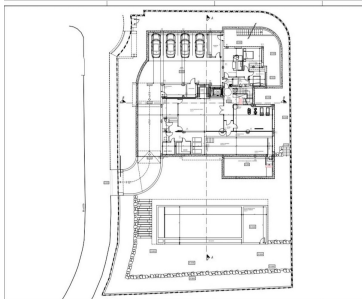
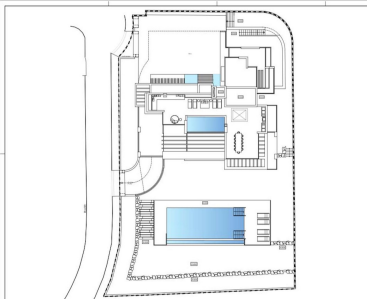
Telephone: +34 637 87 73 78

Email: info@banusimmo.com

La Reserva Del Alcuaz, La Azalia 1 -1B, 29679, Benahavis

Banus Immo
MARBELLA

Gallery



Telephone: +34 637 87 73 78

Email: info@banusimmo.com

La Reserva Del Alcuzeuz, La Azalia 1 -1B, 29679, Benahavis

Property Description

Location: The Golden Mile, Costa del Sol, Spain

Plot with building licence in Urbanization Rocio de Nagueles, strategically located in the heart of Marbella's Golden Mile, offering wonderful views of both the sea and the mountains.

It has direct access from the Mediterranean Highway or A7, placing it just 5 minutes by car from the center of Marbella and Puerto Banús, as well as from the best schools such as The British International School of Marbella, and golf courses located on the Costa del Sol. All of this makes it an ideal place for both relaxation in its idyllic surroundings and for enjoying Marbella's leisure activities.

Area: 1,850 m². Buildability: 481 m². Classification: UE-4 (Single-Family). You can build 2 floors plus a basement.

Classification: UE-4

Area: 1,850.00 m²

Buildability: 0.26 (m²t / m²s)

Buildability m²t: 481 m²

% Occupancy: 0.25 %

Occupancy m²s: 462.5 m²

Density: 1 house

Additional Info

For Sale	Type: Plot	Land Area: 1850 sq m
Setting: Close To Golf	Close To Shops	Close To Town
Close To Schools	Close To Forest	Urbanisation
Orientation: South	Views: Sea	Mountain
Category: Bargain	Cheap	Distressed
Golf	Holiday Homes	Investment
Luxury	Off Plan	Reduced
Resale	With Planning Permission	Contemporary
Land Size : 1850 sq m		