

4 Bed Townhouse For Sale

€5,300,000

Puerto Banús, Costa del Sol

Ref: R4802086

Brand new modern villa located in the prestigious area of Puerto Banus - Atalaya Rio Verde, close to the beach and within a secure community. This home is all about comfort and convenience, featuring modern architecture and private amenities. The villa has been built in four levels, including a basement that can be customized and a rooftop terrace with a small heated pool. Designed with an open layout to maximize space and natural light, it includes a private lift to access all levels. On the first level, you find the master bedroom suite with a designer walk-in wardrobe, a terrace, and another two spacious suites. The basement provides options for adding a gym, spa, extra bedrooms, or a studio. A great location with a practical design, making it suitable for those looking for a modern hom...

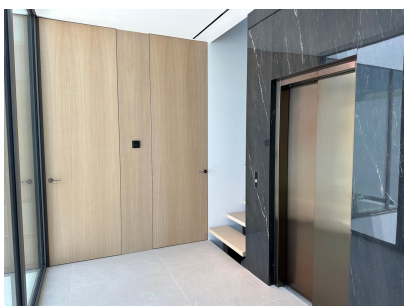
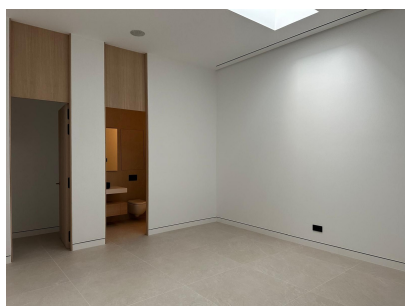
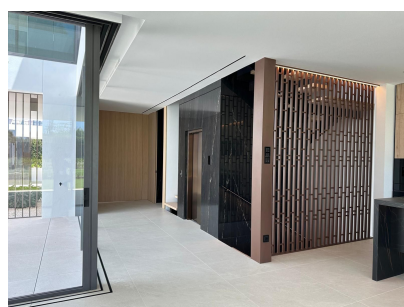
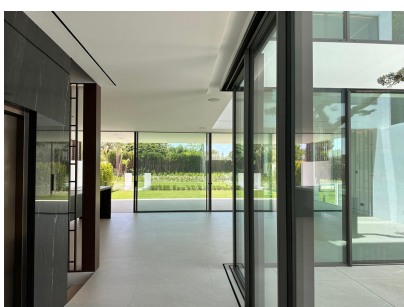
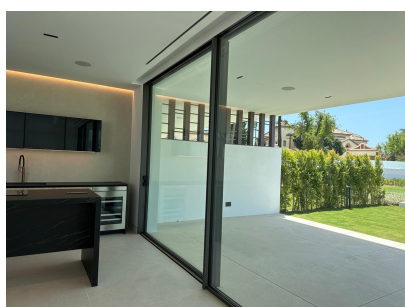
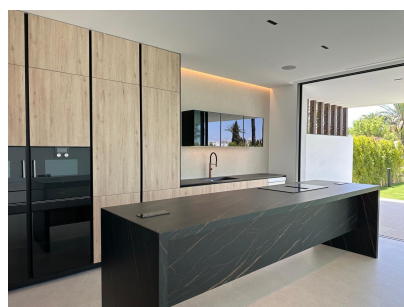
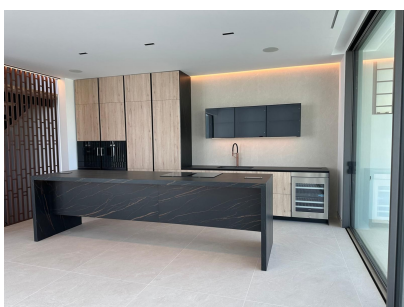
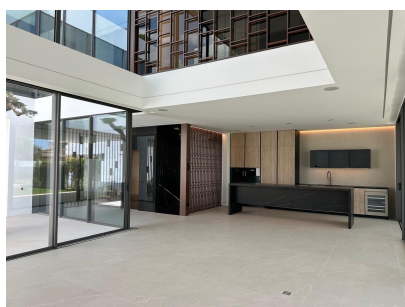
Telephone: +34 637 87 73 78

Email: info@banusimmo.com

La Reserva Del Alucuzcuz, La Azalia 1 -1B, 29679, Benahavis

BanusImmo
MARBELLA

Gallery



Telephone: +34 637 87 73 78

Email: info@banusimmo.com

La Reserva Del Alcuzcuz, La Azalia 1 -1B, 29679, Benahavis

Banus Immo
MARBELLA

Property Description

Location: Puerto Banús, Costa del Sol, Spain

Brand new modern villa located in the prestigious area of Puerto Banus - Atalaya Rio Verde, close to the beach and within a secure community. This home is all about comfort and convenience, featuring modern architecture and private amenities.

The villa has been built in four levels, including a basement that can be customized and a rooftop terrace with a small heated pool. Designed with an open layout to maximize space and natural light, it includes a private lift to access all levels. On the first level, you find the master bedroom suite with a designer walk-in wardrobe, a terrace, and another two spacious suites.

The basement provides options for adding a gym, spa, extra bedrooms, or a studio. A great location with a practical design, making it suitable for those looking for a modern home.

Additional Info

For Sale	Beds: 4	Baths: 4
Type: Townhouse	Area: 603 sq m	Land Area: 90 sq m
Garden	Pool	Setting: Town
Close To Port	Close To Shops	Close To Sea
Close To Town	Close To Schools	Close To Marina
Urbanisation	Orientation: South East	South
South West	Condition: Excellent	Pool: Communal
Private	Views: Mountain	Golf
Panoramic	Garden	Pool
Lift	Near Transport	Private Terrace
Solarium	Gym	Sauna
Guest Apartment	Storage Room	Ensuite Bathroom
Jacuzzi	Domotics	Near Mosque
Furniture: Fully Furnished	Kitchen: Fully Fitted	Garden: Communal
Private	Security: Gated Complex	24 Hour Security

Parking: Underground	Garage	Covered
Open	Street	More Than One
Communal	Private	Category: Golf
Holiday Homes	Investment	Luxury
Reduced	Resale	Contemporary
Built Area : 603 sq m	Land Size : 90 sq m	

Telephone: +34 637 87 73 78

Email: info@banusimmo.com

La Reserva Del Alczucz, La Azalia 1 -1B, 29679, Benahavis