



2 Bed Apartment To Rent

€2,300/mth.

Benahavís, Costa del Sol

Ref: R4786630

Ground Floor Apartment, Benahavís, Costa del Sol. 2 Bedrooms, 2 Bathrooms, Built 90 m², Terrace 25 m², Garden/Plot 100 m². Setting : Close To Golf, Close To Town, Close To Schools, Urbanisation. Orientation : South West. Condition : Excellent. Pool : Communal. Climate Control : Air Conditioning. Features : Covered Terrace, Lift, Fitted Wardrobes, Private Terrace, WiFi, Marble Flooring, Double Glazing, Fiber Optic. Furniture : Fully Furnished. Kitchen : Fully Fitted. Garden : Communal, Private. Security : Gated Complex, Electric Blinds. Parking : Garage. Utilities : Electricity. Category : Golf, Holiday Homes, Contemporary.

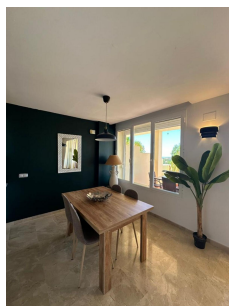
Telephone: +34 637 87 73 78

Email: info@banusimmo.com

La Reserva Del Alczucuz, La Azalia 1 -1B, 29679, Benahavis

Banus Immo
MARBELLA

Gallery



Telephone: +34 637 87 73 78

Email: info@banusimmo.com

La Reserva Del Alucuz, La Azalia 1 -1B, 29679, Benahavis

BanusImmo
MARBELLA

Property Description

Location: Benahavís, Costa del Sol, Spain

Ground Floor Apartment, Benahavís, Costa del Sol.

2 Bedrooms, 2 Bathrooms, Built 90 m², Terrace 25 m², Garden/Plot 100 m².

Setting : Close To Golf, Close To Town, Close To Schools, Urbanisation.

Orientation : South West.

Condition : Excellent.

Pool : Communal.

Climate Control : Air Conditioning.

Features : Covered Terrace, Lift, Fitted Wardrobes, Private Terrace, WiFi, Marble Flooring, Double Glazing, Fiber Optic.

Furniture : Fully Furnished.

Kitchen : Fully Fitted.

Garden : Communal, Private.

Security : Gated Complex, Electric Blinds.

Parking : Garage.

Utilities : Electricity.

Category : Golf, Holiday Homes, Contemporary.

Additional Info

For Rent	Beds: 2	Baths: 2
Type: Apartment	Area: 121 sq m	Land Area: 100 sq m
Garden	Pool	Setting: Close To Golf
Close To Shops	Close To Town	Close To Schools
Urbanisation	Orientation: South West	Condition: Excellent
Pool: Communal	Climate Control: Air Conditioning	Covered Terrace
Lift	Fitted Wardrobes	Private Terrace
WiFi	Marble Flooring	Double Glazing
Fiber Optic	Furniture: Fully Furnished	Kitchen: Fully Fitted
Garden: Communal	Private	Security: Gated Complex
Electric Blinds	Parking: Garage	Utilities: Electricity
Category: Golf	Holiday Homes	Contemporary
Built Area : 121 sq m	Land Size : 100 sq m	

Telephone: +34 637 87 73 78

Email: info@banusimmo.com

La Reserva Del Alcuazcuz, La Azalia 1 -1B, 29679, Benahavis

Banus Immo
MARBELLA