

3 Bed Villa (Detached) For Sale

€750,000

Nueva Andalucía, Costa del Sol

Ref: R4791973

Detached Andalusian style villa on two floors in Nueva Andalucía, with great renovation potential. On the first floor spacious living room with fireplace and large window with access to a large terrace overlooking the garden; fully fitted and equipped kitchen and a bathroom. Upstairs there are 3 double bedrooms, all with views to the garden and fitted closets, one with terrace and one with balcony, 1 bathroom and a storage room. The villa is surrounded by a garden with lawn and several large trees and in which you could easily locate a garage. It has solar panels for hot water. The property is located in a very quiet residential area and close to Puerto Banus and golf courses.

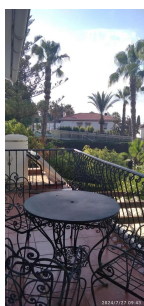
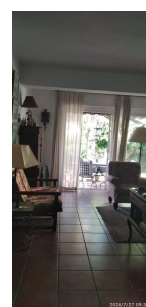
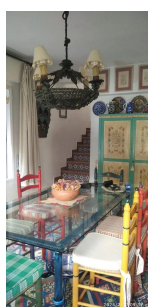
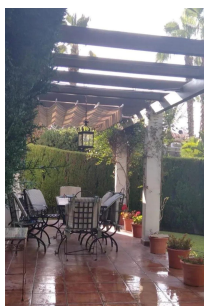
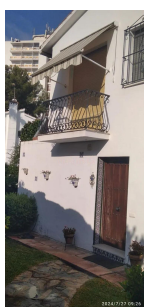
Telephone: +34 637 87 73 78

Email: info@banusimmo.com

La Reserva Del Alczucz, La Azalia 1 -1B, 29679, Benahavis

Banus Immo
MARBELLA

Gallery



Telephone: +34 637 87 73 78

Email: info@banusimmo.com

La Reserva Del Alcuizcuz, La Azalia 1 -1B, 29679, Benahavis

Banus Immo
MARBELLA

Property Description

Location: Nueva Andalucía, Costa del Sol, Spain

Detached Andalusian style villa on two floors in Nueva Andalucia, with great renovation potential. On the first floor spacious living room with fireplace and large window with access to a large terrace overlooking the garden; fully fitted and equipped kitchen and a bathroom. Upstairs there are 3 double bedrooms, all with views to the garden and fitted closets, one with terrace and one with balcony, 1 bathroom and a storage room.

The villa is surrounded by a garden with lawn and several large trees and in which you could easily locate a garage.

It has solar panels for hot water.

The property is located in a very quiet residential area and close to Puerto Banus and golf courses.

Additional Info

For Sale	Beds: 3	Baths: 2
Type: Villa (Detached)	Area: 110 sq m	Land Area: 432 sq m
Garden	Orientation: South	Pool: Room For Pool
Covered Terrace	Private Terrace	Storage Room
Garden: Private	Built Area : 110 sq m	Land Size : 432 sq m