



## 2 Bed Apartment For Sale

# €430,000

**Nueva Andalucía, Costa del Sol**

**Ref: R4787437**

Apartment in one of the best areas of Marbella, in the area of Los Naranjos de Marbella. It consists of two large bedrooms, two bathrooms (one of them en suite), living-dining room overlooking the gardens, renovated kitchen with large storage capacity, patio attached to the kitchen, with storage closet, large back terrace and enclosed porch with Lumon that enables it as an adjoining room. Direct access to the communal pool and gardens in a community with security. Central air conditioning and marble floors and bathrooms. A 5 minutes from Puerto Banus and next to cafes, supermarket and public bus stops and school. Do not hesitate to request a visit!

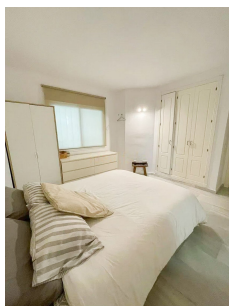
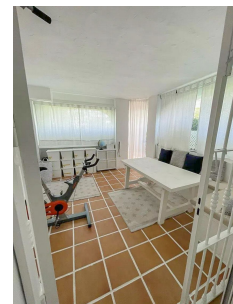
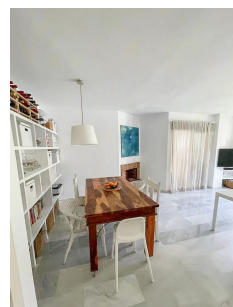
Telephone: +34 637 87 73 78

Email: [info@banusimmo.com](mailto:info@banusimmo.com)

La Reserva Del Alcuzeuz, La Azalia 1 -1B, 29679, Benahavis

*Banus Immo*  
MARBELLA

# Gallery



Telephone: +34 637 87 73 78

Email: [info@banusimmo.com](mailto:info@banusimmo.com)

La Reserva Del Alcuzeuz, La Azalia 1 -1B, 29679, Benahavis

*BanusImmo*  
MARBELLA



# Property Description

**Location:** Nueva Andalucía, Costa del Sol, Spain

Apartment in one of the best areas of Marbella, in the area of Los Naranjos de Marbella. It consists of two large bedrooms, two bathrooms (one of them en suite), living-dining room overlooking the gardens, renovated kitchen with large storage capacity, patio attached to the kitchen, with storage closet, large back terrace and enclosed porch with Lumon that enables it as an adjoining room. Direct access to the communal pool and gardens in a community with security.

Central air conditioning and marble floors and bathrooms.

A 5 minutes from Puerto Banus and next to cafes, supermarket and public bus stops and school.

Do not hesitate to request a visit!

# Additional Info

For Sale	Beds: 2	Baths: 2
Type: Apartment	Area: 142 sq m	Garden
Pool	Condition: Excellent	Pool: Communal
Climate Control: Air Conditioning	Covered Terrace	Private Terrace
Garden: Communal	Security: Gated Complex	Parking: Communal
Built Area : 142 sq m		