



2 Bed Apartment For Sale

€724,500

Puerto Banús, Costa del Sol

Ref: R4793452

The Building is on a corner in the heart of Puerto Banús, excellent category, built in marble and glass, modern, elegant design; with few homes and limited use by the owners, panoramic elevators, gardens and 2 swimming pools, gym, the apartments are spacious, marble floors, consistent finishes and with heating by gas radiators. Its location is exceptional! in front of the Corte Inglés, and Plaza Antonio Banderas, a few meters away. from other shopping and cinemas, beach, restaurants and all the best international brands in the world that are on the 1st and 2nd lines of Puerto Banús. It has a microclimate protected by its mountains, which makes the climate warm and the sun shine all year round. There are few such wonderful places on the planet!

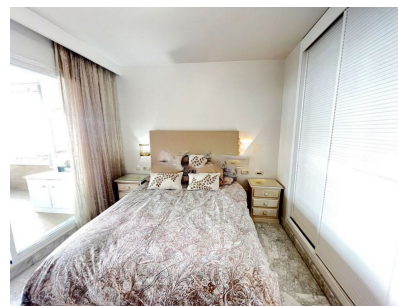
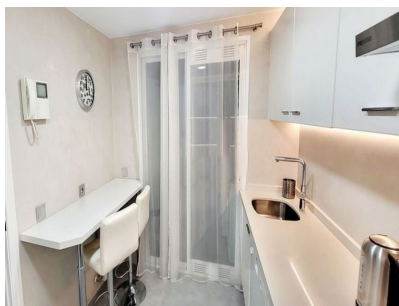
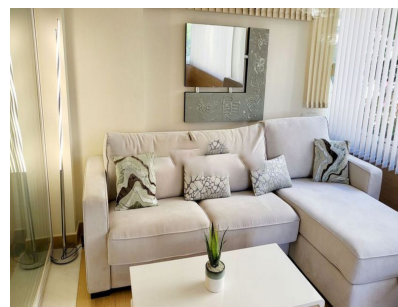
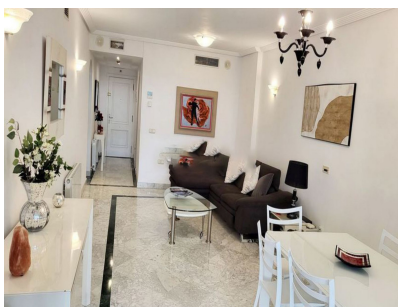
Telephone: +34 637 87 73 78

Email: info@banusimmo.com

La Reserva Del Alcuizcuz, La Azalia 1 -1B, 29679, Benahavis

BanusImmo
MARBELLA

Gallery



Telephone: +34 637 87 73 78

Email: info@banusimmo.com

La Reserva Del Alcuarcz, La Azalia 1 -1B, 29679, Benahavis

Banus Immo
MARBELLA

Property Description

Location: Puerto Banús, Costa del Sol, Spain

The Building is on a corner in the heart of Puerto Banús, excellent category, built in marble and glass, modern, elegant design; with few homes and limited use by the owners, panoramic elevators, gardens and 2 swimming pools, gym, the apartments are spacious, marble floors, consistent finishes and with heating by gas radiators.

Its location is exceptional! in front of the Corte Inglés, and Plaza Antonio Banderas, a few meters away. from other shopping and cinemas, beach, restaurants and all the best international brands in the world that are on the 1st and 2nd lines of Puerto Banús. It has a microclimate protected by its mountains, which makes the climate warm and the sun shine all year round.

There are few such wonderful places on the planet!

Additional Info

For Sale	Beds: 2	Baths: 2
Type: Apartment	Area: 180 sq m	Garden
Pool	Setting: Commercial Area	Beachside
Port	Close To Port	Close To Sea
Close To Marina	Orientation: South East	Condition: Excellent
Pool: Communal	Climate Control: Air Conditioning	Lift
Fitted Wardrobes	Near Transport	Private Terrace
Storage Room	Ensuite Bathroom	Marble Flooring
Double Glazing	Kitchen: Fully Fitted	Garden: Communal
Security: Gated Complex	Parking: Underground	Utilities: Electricity
Drinkable Water	Built Area : 180 sq m	

Telephone: +34 637 87 73 78

Email: info@banusimmo.com

La Reserva Del Alcuzcuz, La Azalia 1 -1B, 29679, Benahavis

Banus Immo
MARBELLA