



## 3 Bed Townhouse For Sale

**€925,000**

**San Roque Club, Costa del Sol**

**Ref: R4725820**

BRAND NEW MEGA SPACIOUS SEMI DETACHED TOWNHOUSE FOR SALE ON SAN ROQUE GOLF COURSE Location highlights \* Frontline golf position on the prestigious San Roque Golf Club \* Surrounded by nature and tranquility \* Less than a minute away from the A7 motorway \* Trendy top quality complex "Hoyo 17", gated with beautiful communal pool and small gym Townhouse highlights \* Contemporary luxury edition with very extensive garden, terrace and interior sizes \* Best location in the complex: semi-detached corner position (=more privacy) in the L-shaped complex, boasting a very large private L-shaped garden of no less than 453m<sup>2</sup> \* Brand new modern construction, less than 11 months old \* Top quality building specs, fixtures and fittings \* Distribution over 4 levels: \* Ground floor with entrance...

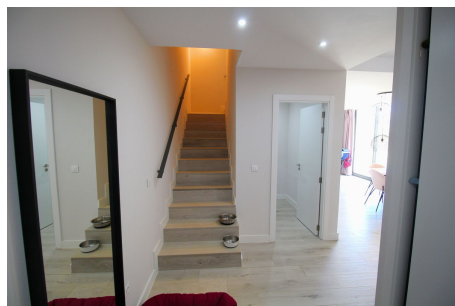
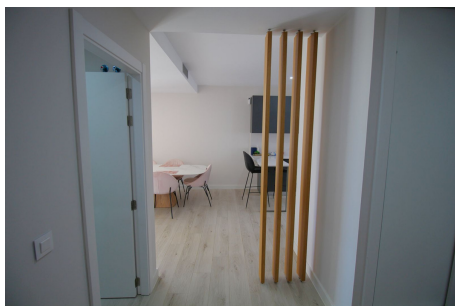
Telephone: +34 637 87 73 78

Email: [info@banusimmo.com](mailto:info@banusimmo.com)

La Reserva Del Alczucuz, La Azalia 1 -1B, 29679, Benahavis

*Banus Immo*  
MARBELLA

# Gallery



Telephone: +34 637 87 73 78

Email: [info@banusimmo.com](mailto:info@banusimmo.com)

La Reserva Del Alcuizcuz, La Azalia 1 -1B, 29679, Benahavis

*Banus Immo*  
MARBELLA

# Property Description

**Location:** San Roque Club, Costa del Sol, Spain

BRAND NEW MEGA SPACIOUS SEMI DETACHED TOWNHOUSE FOR SALE ON SAN ROQUE GOLF COURSE

## Location highlights

- \* Frontline golf position on the prestigious San Roque Golf Club
- \* Surrounded by nature and tranquility
- \* Less than a minute away from the A7 motorway
- \* Trendy top quality complex "Hoyo 17", gated with beautiful communal pool and small gym

## Townhouse highlights

- \* Contemporary luxury edition with very extensive garden, terrace and interior sizes
- \* Best location in the complex: semi-detached corner position (=more privacy) in the L-shaped complex, boasting a very large private L-shaped garden of no less than 453m<sup>2</sup>
- \* Brand new modern construction, less than 11 months old
- \* Top quality building specs, fixtures and fittings
- \* Distribution over 4 levels: \* Ground floor with entrance hall and staircase, guest toilet and access to the very generous open-plan L-shaped living room, integrated with dining area and fully equipped open plan kitchen. Access via large sliding floor to ceiling windows to the truly large private terrace and garden area . \* Upper floor with a large en-suite master bedroom and access to a very spacious terrace with fantastic panoramic views of the sea, golf course, garden and mountains. 2 additional double rooms with fitted wardrobes and shared bathroom, terrace. \* Top floor with very generous solarium and terrace. \* Lower floor with large double height room which can be used as extra bedroom, guest apartment, games room, private gym, bodega, private music or dance studio, hobby room. Direct access to the 2 private underground parking slots associated to the apartment.

This is a perfect home for a family or couple who appreciate a large home with loads of modern comfort, home making possibilities, close to golf and nature.

# Additional Info

For Sale	Beds: 3	Baths: 3
Type: Townhouse	Area: 440 sq m	Garden
Pool	Setting: Frontline Golf	Close To Golf
Close To Forest	Orientation: East	South East
South	Condition: Excellent	Pool: Communal
Climate Control: Air Conditioning	Hot A/C	Views: Sea
Golf	Country	Panoramic
Garden	Covered Terrace	Fitted Wardrobes
Private Terrace	Solarium	WiFi
Gym	Guest Apartment	Utility Room
Ensuite Bathroom	Double Glazing	Staff Accommodation
Furniture: Optional	Kitchen: Fully Fitted	Garden: Private
Landscaped	Security: Gated Complex	Alarm System
Parking: Underground	More Than One	Communal
Utilities: Electricity	Category: Golf	Holiday Homes

Investment

Luxury

Resale

Contemporary

Built Area : 440 sq m

Telephone: +34 637 87 73 78

Email: [info@banusimmo.com](mailto:info@banusimmo.com)

La Reserva Del Alcuzcuz, La Azalia 1 -1B, 29679, Benahavis

*Banus Immo*<sup>®</sup>  
MARBELLA