



3 Bed Townhouse To Rent

€5,700/mth.

Nueva Andalucía, Costa del Sol

Ref: R4762027

Discover this stunning townhouse nestled in the heart of Nueva Andalucía, just moments away from the vibrant Puerto Banús in Marbella. Set on a private road, this luxurious residence perfectly blends elegance and comfort, with the majestic La Concha Mountain as its scenic backdrop, offering breath-taking mountain and partial sea views. Property Features: Ground Floor: As you step into the grand entrance, you are welcomed by an open-plan kitchen and living-dining area, enhanced by an abundance of natural light. The state-of-the-art kitchen features custom cabinetry and top-of-the-line appliances. The ground floor seamlessly integrates indoor and outdoor living, with direct access to a lush garden, a sparkling pool, and an alfresco dining area. Sliding glass doors ensure you can enjoy the...

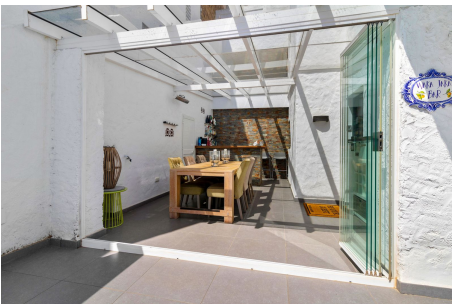
Telephone: +34 637 87 73 78

Email: info@banusimmo.com

La Reserva Del Alczucuz, La Azalia 1 -1B, 29679, Benahavis

BanusImmo
MARBELLA

Gallery



Telephone: +34 637 87 73 78

Email: info@banusimmo.com

La Reserva Del Alcuzcuz, La Azalia 1 -1B, 29679, Benahavis

Property Description

Location: Nueva Andalucía, Costa del Sol, Spain

Discover this stunning townhouse nestled in the heart of Nueva Andalucía, just moments away from the vibrant Puerto Banús in Marbella. Set on a private road, this luxurious residence perfectly blends elegance and comfort, with the majestic La Concha Mountain as its scenic backdrop, offering breathtaking mountain and partial sea views.

Property Features:

Ground Floor: As you step into the grand entrance, you are welcomed by an open-plan kitchen and living-dining area, enhanced by an abundance of natural light. The state-of-the-art kitchen features custom cabinetry and top-of-the-line appliances. The ground floor seamlessly integrates indoor and outdoor living, with direct access to a lush garden, a sparkling pool, and an alfresco dining area. Sliding glass doors ensure you can enjoy the beautiful winter evenings.

First Floor: The first floor houses a large open terrace, accessible from both the master bedroom and the second bedroom, overlooking the pool and garden area. This is an ideal spot to unwind and take in the spectacular mountain views.

Bedrooms & Bathrooms: This exquisite property boasts 3 spacious bedrooms, each with its own en-suite bathroom, and terrace which is spread across 1 meticulously designed level. The modern aesthetic is accentuated by careful attention to detail throughout.

Bedrooms: The master suite offers a serene retreat with a luxurious en-suite bathroom and ample storage. The contemporary design is carried through to the two guest bedrooms, ensuring comfort and style for all occupants.

Garage: A private garage is located on the lower level, providing convenient and secure parking.

Prime Location:

Situated in the prestigious Nueva Andalucía area, this townhouse offers a sophisticated lifestyle with easy access to a plethora of local amenities. You are just 150 meters away from the renowned La Sala restaurant and within proximity to international schools and world-famous golf courses.

Additionally, two major airports are just over 45 minutes away, making travel a breeze.

Experience the Best of Marbella:

Nueva Andalucía, often referred to as "Golf Valley," is home to some of the best golf courses in the region, attracting enthusiasts from around the globe. The area features a mix of traditional Andalusian charm and modern luxury, making it a sought-after residential spot. The nearby Puerto Banús marina is renowned for its luxury yachts, designer boutiques, and vibrant nightlife, catering to the jet-setting crowd.

For nature lovers, the Lago de las Tortugas (Turtle Lake) offers a serene spot for picnics and family walks, surrounded by lush woodlands and picturesque views reminiscent of the Alps. The local

climate boasts around 320 days of sunshine annually, providing an ideal environment for outdoor activities year-round.

In addition to its natural beauty, Nueva Andalucía hosts a popular Saturday market where visitors can explore arts, crafts, antiques, and local produce. The area is well-served by numerous restaurants offering a variety of cuisines, reflecting its cosmopolitan community.

Whether you're soaking in the views of La Concha Mountain, enjoying the vibrant social scene of Puerto Banús, or indulging in the local dining and shopping options, this property places you at the centre of it all. Embrace a life of luxury, comfort, and unparalleled convenience in this exceptional townhouse.

Telephone: +34 637 87 73 78

Email: info@banusimmo.com

La Reserva Del Alcazucuz, La Azalia 1 -1B, 29679, Benahavis

Banus Immo[®]
MARBELLA

Additional Info

For Rent	Beds: 3	Baths: 3
Type: Townhouse	Area: 194 sq m	Land Area: 383 sq m
Garden	Pool	Setting: Close To Port
Close To Shops	Close To Town	Close To Marina
Urbanisation	Orientation: South East	Condition: Excellent
Pool: Communal	Private	Climate Control: Air Conditioning
Hot A/C	Cold A/C	Views: Sea
Mountain	Garden	Pool
Covered Terrace	Fitted Wardrobes	Private Terrace
WiFi	Utility Room	Ensuite Bathroom
Bar	Double Glazing	Fiber Optic
Furniture: Fully Furnished	Kitchen: Fully Fitted	Garden: Private
Security: Entry Phone	Alarm System	Parking: Garage
Utilities: Electricity	Drinkable Water	Category: Luxury

Telephone: +34 637 87 73 78

Email: info@banusimmo.com

La Reserva Del Alcuzczuz, La Azalia 1 -1B, 29679, Benahavis