



5 Bed Villa (Detached) For Sale

€9,800,000

San Pedro de Alcántara, Costa del Sol

Ref: R4767664

Beachfront villa project between Puerto Banus and San Pedro de Alcantara Located between Puerto Banus and San Pedro de Alcántara, this villa is in a great beachfront location with direct access to the beach! This property immerses you in luxury thanks to its high-quality finishes, great layout, private facilities and fantastic views. This luxury beachfront villa offers a unique opportunity for those looking for sophisticated coastal living. With its carefully designed spaces and beautiful surroundings, this property offers an exceptional lifestyle characterised by beauty and sophistication. Embrace the serene rhythm of the sea and discover a residence that seamlessly blends luxury with seaside charm. Layout: The villa comprises 4 floors , each with an open and practical layout and all...

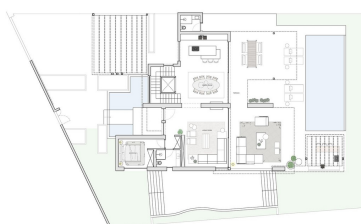
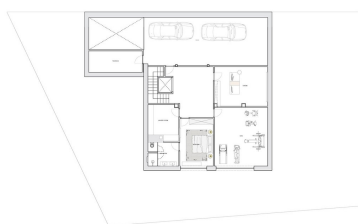
Telephone: +34 637 87 73 78

Email: info@banusimmo.com

La Reserva Del Alcuizcuz, La Azalia 1 -1B, 29679, Benahavis

BanusImmo
MARBELLA

Gallery



Telephone: +34 637 87 73 78

Email: info@banusimmo.com

La Reserva Del Alcuzcuz, La Azalia 1 -1B, 29679, Benahavis

Banus Immo
MARBELLA

Property Description

Location: San Pedro de Alcántara, Costa del Sol, Spain

Beachfront villa project between Puerto Banus and San Pedro de Alcántara

Located between Puerto Banus and San Pedro de Alcántara, this villa is in a great beachfront location with direct access to the beach! This property immerses you in luxury thanks to its high-quality finishes, great layout, private facilities and fantastic views.

This luxury beachfront villa offers a unique opportunity for those looking for sophisticated coastal living. With its carefully designed spaces and beautiful surroundings, this property offers an exceptional lifestyle characterised by beauty and sophistication. Embrace the serene rhythm of the sea and discover a residence that seamlessly blends luxury with seaside charm.

Layout:

The villa comprises 4 floors , each with an open and practical layout and all connected by a lift , on a plot of 1.001m²:

-The ground floor of 348m² (128m² closed + 220m² terraces) features an open-plan kitchen that flows into the living room, with 4m high ceilings and true floor-to-ceiling windows. These rooms overlook the large terrace with integrated pool and the surrounding garden. There is also a guest bedroom with en-suite bathroom and a terrace that also nicely overlooks a green area.

-On the first floor , of 187m² (119m² closed + 68m² terraces), we find 3 more bedrooms, including the master bedroom with a private terrace with spectacular sea views , an en-suite bathroom and dressing room. The other bedrooms also open onto a beautiful terrace with stunning sea views and have en-suite bathrooms.

-The solarium of 138m² offers the most spectacular frontline sea views, where there are spacious lounge and seating areas and in addition there is also a second pool, to enjoy your evening cocktail.

-The basement of over 263m² is divided into several areas that can be used for various purposes, with in this case a gym and cinema. There will also be a 5th bedroom with en-suite bathroom, a storage/laundry room and an underground garage for 4 large cars (accessible with the car-elevator).

Telephone: +34 637 87 73 78

Email: info@banusimmo.com

La Reserva Del Alcuzcuz, La Azalia 1 -1B, 29679, Benahavis

BanusImmo
MARBELLA

Additional Info

For Sale	Beds: 5	Baths: 6
Type: Villa (Detached)	Area: 936 sq m	Land Area: 1006 sq m
Garden	Pool	Setting: Beachfront
Close To Port	Close To Sea	Close To Town
Close To Marina	Front Line Beach Complex	Orientation: South East
South	South West	Condition: Excellent
New Construction	Pool: Private	Climate Control: Air Conditioning
U/F Heating	U/F/H Bathrooms	Views: Sea
Beach	Panoramic	Covered Terrace
Lift	Private Terrace	Solarium
Gym	Ensuite Bathroom	Double Glazing
Domotics	Basement	Furniture: Optional
Kitchen: Fully Fitted	Garden: Private	Security: Gated Complex
Alarm System	Parking: Underground	Garage
Private	Utilities: Electricity	Drinkable Water

Telephone	Photovoltaic solar panels	Solar water heating
Category: Beachfront	Investment	Luxury
Contemporary	Built Area : 936 sq m	Land Size : 1006 sq m