



2 Bed Apartment To Rent

€2,700/mth.

Nueva Andalucía, Costa del Sol

Ref: R4765891

Apartment for rent in Nueva Andalucía The prestigious residential complex boasts a high standard that suits every person's taste and needs. The apartment is in perfect condition and offers a large living and dining room with direct access to a spacious terrace overlooking the shared pool and mature gardens. Both the master bedroom and guest bedroom have en-suite bathrooms. One bedroom has direct access to the terrace. The kitchen is spacious, with all the accompanying appliances. In addition to everything mentioned, the apartment has a guest toilet, marble floors with underfloor heating, hot and cold air conditioning, as well as underground parking, and a storage room. Inside the complex, mature gardens surround a lovely communal swimming pool. Furthermore, there is an indoor swimming...

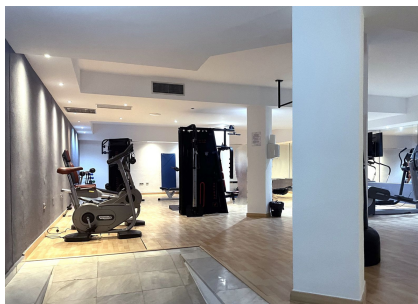
Telephone: +34 637 87 73 78

Email: info@banusimmo.com

La Reserva Del Alcuzcuz, La Azalia 1 -1B, 29679, Benahavis

BanusImmo
MARBELLA

Gallery



Telephone: +34 637 87 73 78

Email: info@banusimmo.com

La Reserva Del Alcuzcuz, La Azalia 1 -1B, 29679, Benahavis

BanusImmo
MARBELLA

Property Description

Location: Nueva Andalucía, Costa del Sol, Spain

Apartment for rent in Nueva Andalucía

The prestigious residential complex boasts a high standard that suits every person's taste and needs. The apartment is in perfect condition and offers a large living and dining room with direct access to a spacious terrace overlooking the shared pool and mature gardens. Both the master bedroom and guest bedroom have en-suite bathrooms. One bedroom has direct access to the terrace.

The kitchen is spacious, with all the accompanying appliances. In addition to everything mentioned, the apartment has a guest toilet, marble floors with underfloor heating, hot and cold air conditioning, as well as underground parking, and a storage room.

Inside the complex, mature gardens surround a lovely communal swimming pool. Furthermore, there is an indoor swimming pool with changing rooms, a Turkish bath, a sauna, and a fully equipped gymnasium. In addition, this gated urbanization is under the control of local security 24 hours a day. Thanks to its superb location in Nueva Andalucía, the demand for this exceptional residential complex is constantly growing.

Everything you could need is nearby - a wide selection of international restaurants which offer exquisite cuisines from cultures all over the world. There are also popular bars, a supermarket, an organic health food store, veterinarians, cafes, and tennis courts. Puerto Banús with its sandy beaches, fantastic restaurants, and designer shops is within walking distance.

For sports enthusiasts, there are two nearby tennis clubs within walking distance. Aloha Tennis Club offers 1 clay and 2 hard courts and also highly qualified coaches. Moreover, there is an on-site restaurant that serves delicious meals and refreshing drinks. Another tennis club, 'Tennis Brothers Marbella' is just around the corner. There you can book tennis lessons, specific physical training, group sessions, court rentals, and mini-tournaments.

For golf enthusiasts, there are 4 golf courses just a few minutes' drive away.

.

Additional Info

For Rent	Beds: 2	Baths: 3
Type: Apartment	Area: 188 sq m	Garden
Pool	Setting: Town	Commercial Area
Close To Golf	Close To Port	Close To Town
Close To Schools	Urbanisation	Orientation: South West
Condition: Excellent	Pool: Communal	Indoor
Heated	Climate Control: Air Conditioning	Hot A/C
Cold A/C	U/F Heating	Views: Mountain
Garden	Pool	Covered Terrace
Lift	Fitted Wardrobes	Private Terrace
Satellite TV	WiFi	Gym
Sauna	Tennis Court	Storage Room
Ensuite Bathroom	Access for people with reduced mobility	Marble Flooring
Double Glazing	24 Hour Reception	Restaurant On Site
Fiber Optic	Furniture: Fully Furnished	Kitchen: Fully Fitted

Garden: Communal	Security: Gated Complex	Electric Blinds
Entry Phone	24 Hour Security	Parking: Underground
Garage	Private	Utilities: Electricity
Category: Golf	Holiday Homes	Luxury
Contemporary	Built Area : 188 sq m	