



## 6 Bed Villa (Detached) For Sale

€4,995,000

Benahavís, Costa del Sol

Ref: R4678969

AMAZING LUXURY VILLA PROJECT. COMPLETION DECEMBER 2024.. 6 BEDROOMS WITH 6 BATHROOM SUITES, DRESSING AREA & EN-SUITE BATHROOMS, SOUTH FACING, INCREDIBLE VIEWS CINEMA ROOM, GYM, 1600 M2 PLOT, 710 M2 BUILT, 220 M2 TERRACE..BESPOKE. The Front line golf architectural project seen here is truly impressive and offers a perfect blend of traditional Andalusian influence with modern design elements. Features include, a sunken cinema room, six large bedroom suites, including dressing rooms and en-suite luxury bathrooms, Staff quarters accommodation, and advanced, sustainable cooling and heating systems, including under floor heating. Contribute to creating a luxurious and comfortable living space that caters to both relaxation and entertainment needs. Also with a double garage and additiona...

Telephone: +34 637 87 73 78

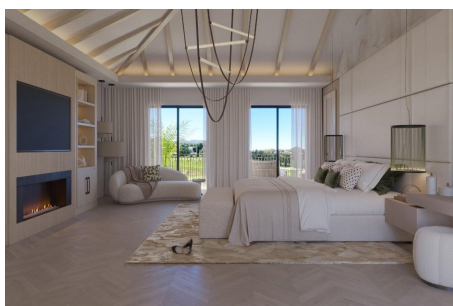
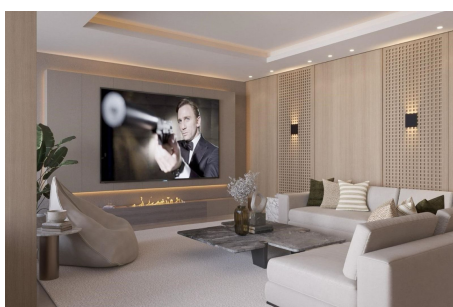
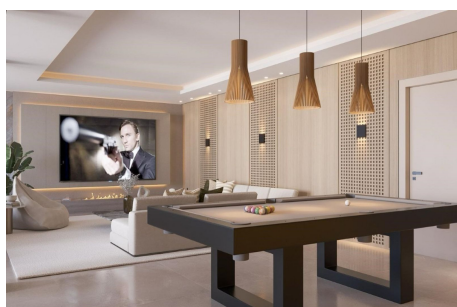
Email: [info@banusimmo.com](mailto:info@banusimmo.com)

La Reserva Del Aluczcuz, La Azalia 1 -1B, 29679, Benahavis

*BanusImmo*  
MARBELLA



# Gallery



Telephone: +34 637 87 73 78

Email: [info@banusimmo.com](mailto:info@banusimmo.com)

La Reserva Del Alucuz, La Azalia 1 -1B, 29679, Benahavis

*Banus Immo*  
MARBELLA

# Property Description

**Location:** Benahavís, Costa del Sol, Spain

AMAZING LUXURY VILLA PROJECT. COMPLETION DECEMBER 2024..

6 BEDROOMS WITH 6 BATHROOM SUITES, DRESSING AREA & EN-SUITE BATHROOMS, SOUTH FACING, INCREDIBLE VIEWS

CINEMA ROOM, GYM, 1600 M2 PLOT, 710 M2 BUILT, 220 M2 TERRACE..BESPOKE.

The Front line golf architectural project seen here is truly impressive and offers a perfect blend of traditional Andalusian influence with modern design elements. Features include, a sunken cinema room, six large bedroom suites, including dressing rooms and en-suite luxury bathrooms, Staff quarters accommodation, and advanced, sustainable cooling and heating systems, including under floor heating. Contribute to creating a luxurious and comfortable living space that caters to both relaxation and entertainment needs. Also with a double garage and additional areas for parking etc, private and secure.

The south-facing orientation of the property not only allows for an abundance of natural light but also offers stunning panoramic views of the surrounding landscape, including the golf course, lakes, sea, and mountains. The combination of these views provides a picturesque backdrop that enhances the overall ambiance of the property and creates a truly breath-taking living experience.

The attention to detail in combining architectural elements, modern amenities, and natural surroundings demonstrates a thoughtful approach to design that aims to provide residents with a harmonious and sophisticated living environment. This architectural project seems to offer a perfect balance between luxury, comfort, and aesthetic appeal, making it an ideal retreat for those seeking a refined and elegant lifestyle.

The property, classed as a new build can be purchased through a number of stages of progression. Completion in early January 2025. The property will be fully fitted and turn key ready. The option of purchasing pre completion can be arranged allowing purchasers to complete with there own tastes.

Built in the footings of an Andalusian masterpiece, orientation, position are exquisite.

Telephone: +34 637 87 73 78

Email: [info@banusimmo.com](mailto:info@banusimmo.com)

La Reserva Del Alcuzcuz, La Azalia 1 -1B, 29679, Benahavis

*Banus Immo*  
MARBELLA

# Additional Info

For Sale	Beds: 6	Baths: 6
Type: Villa (Detached)	Area: 955 sq m	Land Area: 1600 sq m
Garden	Pool	Setting: Frontline Golf
Town	Suburban	Country
Commercial Area	Village	Mountain Pueblo
Close To Golf	Close To Shops	Close To Town
Close To Schools	Close To Forest	Urbanisation
Orientation: South	Condition: Excellent	Recently Renovated
Pool: Private	Heated	Climate Control: Air Conditioning
Pre Installed A/C	Hot A/C	Cold A/C
Fireplace	U/F Heating	U/F/H Bathrooms
Views: Sea	Mountain	Golf
Country	Panoramic	Garden
Pool	Lake	Urban
Forest	Covered Terrace	Fitted Wardrobes

Near Transport	Private Terrace	Solarium
Satellite TV	WiFi	Gym
Sauna	Games Room	Guest Apartment
Storage Room	Utility Room	Ensuite Bathroom
Marble Flooring	Jacuzzi	Barbeque
Double Glazing	Staff Accommodation	Basement
Fiber Optic	Furniture: Fully Furnished	Kitchen: Fully Fitted
Garden: Private	Landscaped	Easy Maintenance
Security: Gated Complex	Electric Blinds	Entry Phone
Alarm System	Safe	Parking: Garage
Private	Utilities: Electricity	Drinkable Water
Telephone	Photovoltaic solar panels	Solar water heating
Category: Golf	Luxury	With Planning Permission
Built Area : 955 sq m	Land Size : 1600 sq m	

Telephone: +34 637 87 73 78

Email: [info@banusimmo.com](mailto:info@banusimmo.com)

La Reserva Del Alcuzcuz, La Azalia 1 -1B, 29679, Benahavis

*Banus Immo*  
MARBELLA