



## 3 Bed Penthouse For Sale

**€995,000**

**Benahavís, Costa del Sol**

**Ref: R4761712**

Stunning Atalaya Hills Penthouse with amazing open views of the Atalaya golf course, across to the Mediterranean Sea. This exquisite frontline golf penthouse with its southwest orientation in Atalaya Hills has outstanding views of the Atalaya golf course and the lake across to the Mediterranean Sea. The penthouse, a modern 3-bedroom, 2-bathroom home is bright with spacious open plan living areas and large sliding doors opening to a large adjacent covered terrace. Designed to make the best use of the natural light and warmth flowing throughout the entire apartment, bringing together interior and exterior spaces. From the living room through the non-framed glass terrace your eyes will be drawn to the spectacular panoramic views of the golf course towards the sea. The kitchen is fully fitted...

Telephone: +34 637 87 73 78

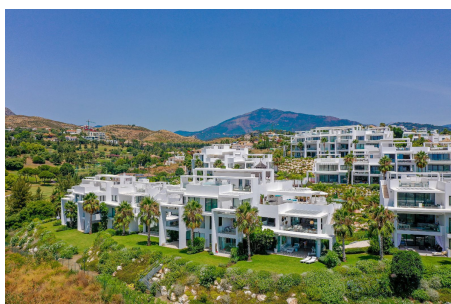
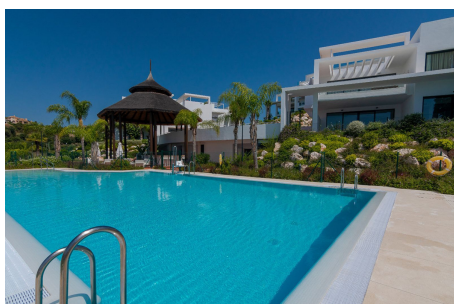
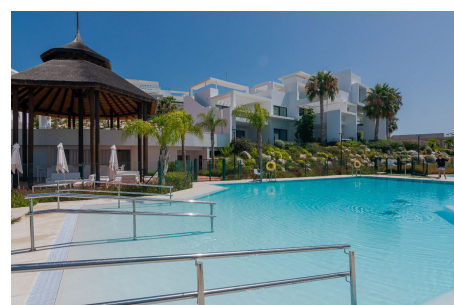
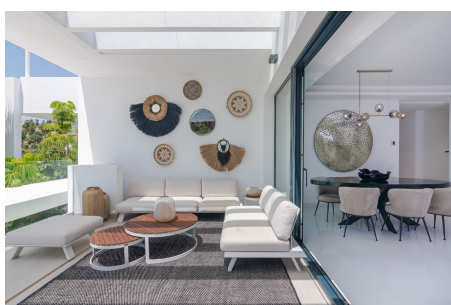
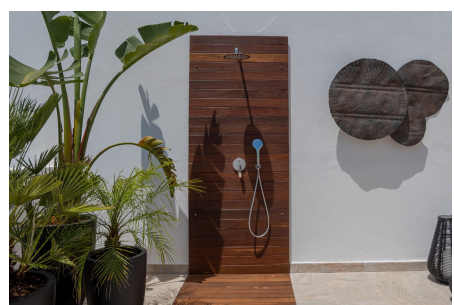
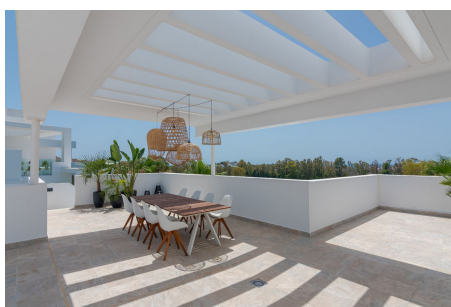
Email: [info@banusimmo.com](mailto:info@banusimmo.com)

La Reserva Del Alcuzcuz, La Azalia 1 -1B, 29679, Benahavis

*Banus Immo*  
MARBELLA



# Gallery



Telephone: +34 637 87 73 78

Email: [info@banusimmo.com](mailto:info@banusimmo.com)

La Reserva Del Alcuzcuz, La Azalia 1 -1B, 29679, Benahavis

*BanusImmo*  
MARBELLA

# Property Description

**Location:** Benahavís, Costa del Sol, Spain

Stunning Atalaya Hills Penthouse with amazing open views of the Atalaya golf course, across to the Mediterranean Sea

This exquisiet frontline golf penthouse with its southwest orientation in Atalaya Hills has outstanding views of the Atalaya golf course and the lake across to the Mediterranean Sea.

The penthouse, a modern 3-bedroom, 2-bathroom home is bright with spacious open plan living areas and large sliding doors opening to a large adjacent covered terrace. Designed to make the best use of the natural light and warmth flowing throughout the entire apartment, bringing together interior and exterior spaces.

From the living room through the non-framed glass terrace your eyes will be drawn to the spectacular panoramic views of the golf course towards the sea.

The kitchen is fully fitted and equipped with a separate utility area.

The master bedroom offers an en-suite bathroom and fully fitted wardrobes. Both the guest bedroom suites, of which one offers a balcony share a bathroom with walk-in shower.

The second level of this outstanding property boosts a massive rooftop terrace with pergola, sundeck area, beautiful tropical plants, al fresco dining area, bali shower and bbq area. Providing privacy a fantastic panoramic views, its ideal to spend warm summer evenings with friends and family.

This penthouse is offered fully furnished and includes two private parkings and a storeroom in the underground garage.

Atalaya Hills a modern sought after, nightly hours security gated urbanisation in the municipality of Benahavis, overlooking the two magnificent 18-hole golf courses. It benefits from Mediterranean landscaped gardens with swimming pools, indoor Spa facilities, gym, large parking spaces and storerooms.

At a stones through is the vibrant Guadalmina practice course with coffee lunch bar and Golf Academie. Three minutes by car we find a Mercadona and a bilingual private school. A few more minutes takes you to the beach in San Pedro, the authentic village of Benahavis, Puerto Banus, Marbella or Estepona, where you can find all amenities, restaurants and Beach Clubs for a luxury lifestyle.

This is the ideal option to obtain a front line golf getaway in a prestigious area, where you can enjoy an idyllic climate in a unique setting.

Do not hesitate to contact us for more information you wish on this penthouse, or to schedule a viewing and experience yourself why we love this apartment so much.

Telephone: +34 637 87 73 78

Email: [info@banusimmo.com](mailto:info@banusimmo.com)

La Reserva Del Alcuzcuz, La Azalia 1 -1B, 29679, Benahavis

*Banus Immo*  
MARBELLA

# Additional Info

For Sale	Beds: 3	Baths: 2
Type: Penthouse	Area: 259 sq m	Garden
Pool	Setting: Frontline Golf	Village
Close To Shops	Close To Town	Close To Schools
Urbanisation	Orientation: South	Condition: Excellent
Pool: Communal	Children`s Pool	Climate Control: Air Conditioning
Hot A/C	U/F/H Bathrooms	Views: Mountain
Golf	Panoramic	Garden
Pool	Lake	Covered Terrace
Lift	Fitted Wardrobes	Private Terrace
Solarium	WiFi	Gym
Sauna	Storage Room	Utility Room
Access for people with reduced mobility	Bar	Double Glazing
Fiber Optic	Furniture: Fully Furnished	Kitchen: Fully Fitted
Garden: Communal	Security: Electric Blinds	Entry Phone

24 Hour Security

Parking: Underground

Utilities: Solar water heating

Category: Golf

Investment

Luxury

Resale

Built Area : 259 sq m

Telephone: +34 637 87 73 78

Email: [info@banusimmo.com](mailto:info@banusimmo.com)

La Reserva Del Alcuzcuz, La Azalia 1 -1B, 29679, Benahavis

*BanusImmo*<sup>®</sup>  
MARBELLA