



## 4 Bed Villa (Detached) For Sale

**€1,350,000**

**Selwo, Costa del Sol**

**Ref: R4748149**

TOTAL RENOVATION PROJECT NEEDED Large house for sale with private garden and pool with an excellent location on the famous La Resina Golf golf course, in Selwo, Estepona. The property needs a full renovation but has great potential and the area is ideal for families and golf lovers, located near the beach and just 7 minutes from Estepona. Do not hesitate to visit it, it is a great opportunity!

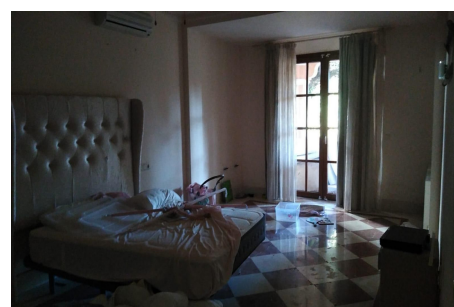
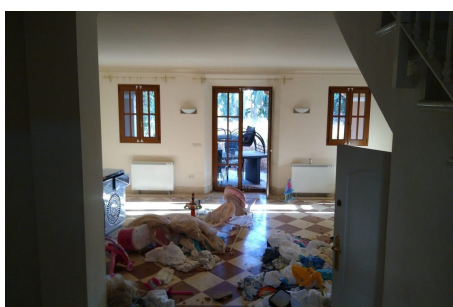
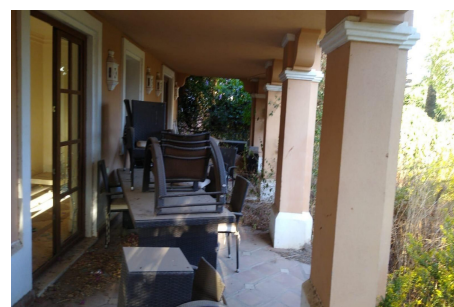
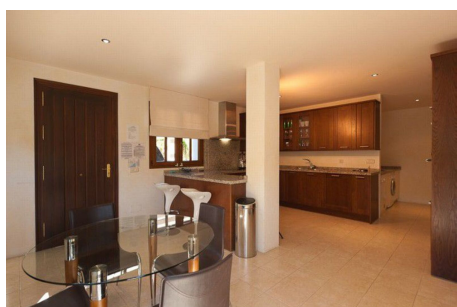
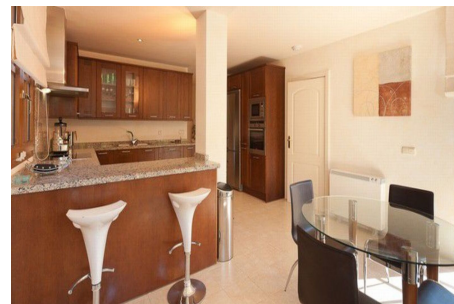
Telephone: +34 637 87 73 78

Email: [info@banusimmo.com](mailto:info@banusimmo.com)

La Reserva Del Alczucuz, La Azalia 1 -1B, 29679, Benahavis

*Banus Immo*  
MARBELLA

# Gallery



Telephone: +34 637 87 73 78

Email: [info@banusimmo.com](mailto:info@banusimmo.com)

La Reserva Del Alcuzeuz, La Azalia 1 -1B, 29679, Benahavis

*Banus Immo*  
MARBELLA

# Property Description

**Location:** Selwo, Costa del Sol, Spain

TOTAL RENOVATION PROJECT NEEDED

Large house for sale with private garden and pool with an excellent location on the famous La Resina Golf course, in Selwo, Estepona. The property needs a full renovation but has great potential and the area is ideal for families and golf lovers, located near the beach and just 7 minutes from Estepona. Do not hesitate to visit it, it is a great opportunity!

Telephone: +34 637 87 73 78

Email: [info@banusimmo.com](mailto:info@banusimmo.com)

La Reserva Del Alcuzcuz, La Azalia 1 -1B, 29679, Benahavis

*Banus Immo*<sup>®</sup>  
MARBELLA

# Additional Info

For Sale	Beds: 4	Baths: 4
Type: Villa (Detached)	Area: 356 sq m	Land Area: 1475 sq m
Garden	Pool	Setting: Close To Schools
Urbanisation	Orientation: South	Condition: Renovation Required
Restoration Required	Pool: Private	Views: Garden
Covered Terrace	Fitted Wardrobes	Private Terrace
Solarium	Satellite TV	Utility Room
Ensuite Bathroom	Marble Flooring	Garden: Private
Parking: Street	Private	Category: Golf
Resale	Built Area : 356 sq m	Land Size : 1475 sq m