



3 Bed Penthouse For Sale

€1,295,000

Fuengirola, Costa del Sol

Ref: R4745869

Penthouse, Fuengirola, Costa del Sol. 3 Bedrooms, 2 Bathrooms, Built 198 m², Terrace 154 m². Setting : Town, Beachside, Close To Port, Close To Shops, Close To Sea, Close To Town, Close To Schools, Close To Marina, Urbanisation. Orientation : South, South West. Condition : Excellent. Pool : Communal. Climate Control : Air Conditioning, Hot A/C, Cold A/C. Views : Sea, Mountain, Panoramic, Pool. Features : Covered Terrace, Lift, Fitted Wardrobes, Near Transport, Private Terrace, Access for people with reduced mobility, Marble Flooring, Double Glazing, Fiber Optic. Furniture : Fully Furnished. Kitchen : Fully Fitted. Garden : Communal. Security : Gated Complex, Entry Phone, 24 Hour Security. Parking : Communal. Utilities : Electricity, Telephone. Category : Holiday Homes, Investment, Luxury,...

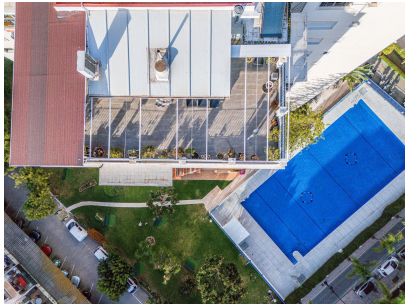
Telephone: +34 637 87 73 78

Email: info@banusimmo.com

La Reserva Del Aluczcuz, La Azalia 1 -1B, 29679, Benahavis

Banus Immo
MARBELLA

Gallery



Telephone: +34 637 87 73 78
Email: info@banusimmo.com
La Reserva Del Alcuzcuz, La Azalia 1 -1B, 29679, Benahavis

Property Description

Location: Fuengirola, Costa del Sol, Spain

Penthouse, Fuengirola, Costa del Sol.

3 Bedrooms, 2 Bathrooms, Built 198 m², Terrace 154 m².

Setting : Town, Beachside, Close To Port, Close To Shops, Close To Sea, Close To Town, Close To Schools, Close To Marina, Urbanisation.

Orientation : South, South West.

Condition : Excellent.

Pool : Communal.

Climate Control : Air Conditioning, Hot A/C, Cold A/C.

Views : Sea, Mountain, Panoramic, Pool.

Features : Covered Terrace, Lift, Fitted Wardrobes, Near Transport, Private Terrace, Access for people with reduced mobility, Marble Flooring, Double Glazing, Fiber Optic.

Furniture : Fully Furnished.

Kitchen : Fully Fitted.

Garden : Communal.

Security : Gated Complex, Entry Phone, 24 Hour Security.

Parking : Communal.

Utilities : Electricity, Telephone.

Category : Holiday Homes, Investment, Luxury, Resale, Contemporary.

Additional Info

For Sale	Beds: 3	Baths: 2
Type: Penthouse	Area: 352 sq m	Garden
Pool	Setting: Town	Beachside
Close To Port	Close To Shops	Close To Sea
Close To Town	Close To Schools	Close To Marina
Urbanisation	Orientation: South	South West
Condition: Excellent	Pool: Communal	Climate Control: Air Conditioning
Hot A/C	Cold A/C	Views: Sea
Mountain	Panoramic	Pool
Covered Terrace	Lift	Fitted Wardrobes
Near Transport	Private Terrace	Access for people with reduced mobility
Marble Flooring	Double Glazing	Fiber Optic
Furniture: Fully Furnished	Kitchen: Fully Fitted	Garden: Communal
Security: Gated Complex	Entry Phone	24 Hour Security
Parking: Communal	Utilities: Electricity	Telephone

Category: Holiday Homes

Investment

Luxury

Resale

Contemporary

Built Area : 352 sq m

Telephone: +34 637 87 73 78

Email: info@banusimmo.com

La Reserva Del Alcuarcz, La Azalia 1 -1B, 29679, Benahavis

Banus Immo[®]
MARBELLA