

## 4 Bed Penthouse To Rent

**€4,000/mth.**

**Nueva Andalucía, Costa del Sol**

**Ref: R4753708**

Presenting The Best Positioned Luxurious Penthouse in Jardines de Guadaiza Discover contemporary living at its finest in this immaculately renovated penthouse, nestled within the sought-after urbanization of Jardines de Guadaiza. Situated in the vibrant new district of Nueva Andalucía, known as La Campana, this property is a true gem in a prime residential location. Here, you'll find yourself enveloped by a tapestry of restaurants, boutiques, golf courses, and other conveniences, all within a leisurely stroll. Additionally, you're just a short drive away from the beloved locales of San Pedro, Puerto Banus Harbour, and Puente Romano. This modern apartment underwent a top-tier renovation in 2022, showcasing a blend of elegance and functionality. It boasts an airy living space sea...

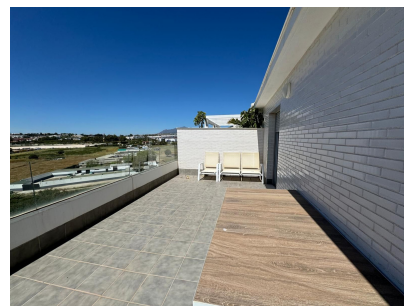
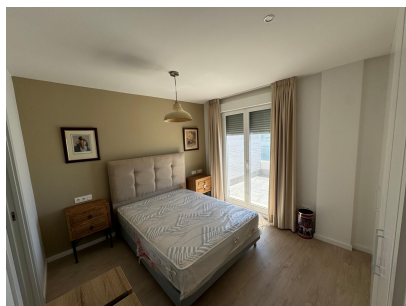
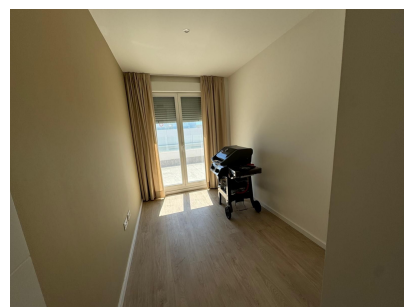
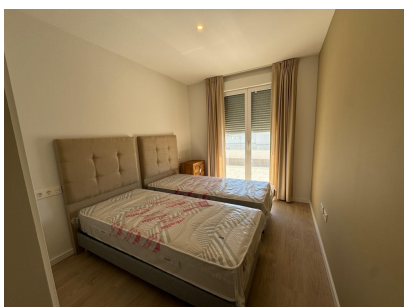
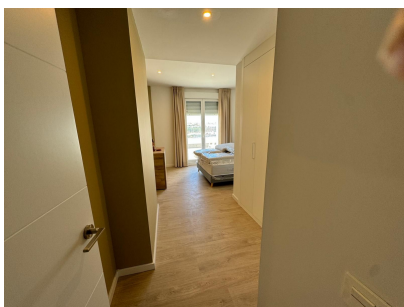
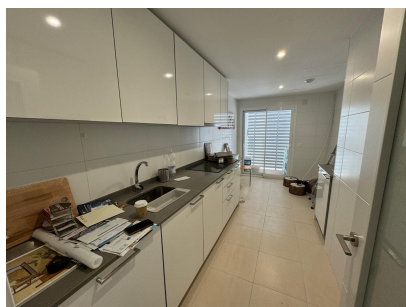
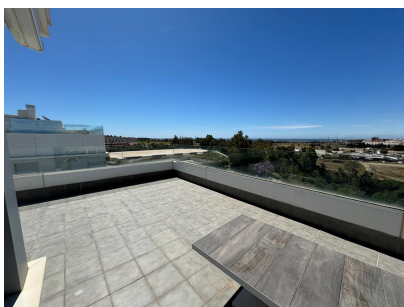
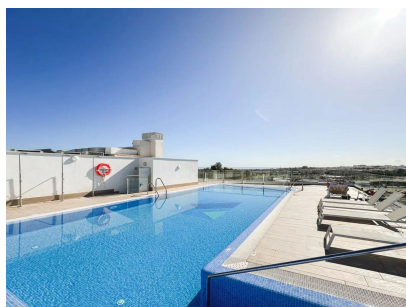
Telephone: +34 637 87 73 78

Email: [info@banusimmo.com](mailto:info@banusimmo.com)

La Reserva Del Alcuizcuz, La Azalia 1 -1B, 29679, Benahavis

*Banus Immo*  
MARBELLA

# Gallery



Telephone: +34 637 87 73 78

Email: [info@banusimmo.com](mailto:info@banusimmo.com)

La Reserva Del Alcuizcuz, La Azalia 1 -1B, 29679, Benahavis

*Banus Immo*  
MARBELLA

# Property Description

**Location:** Nueva Andalucía, Costa del Sol, Spain

Presenting The Best Positioned Luxurious Penthouse in Jardines de Guadaiza

Discover contemporary living at its finest in this immaculately renovated penthouse, nestled within the sought-after urbanization of Jardines de Guadaiza. Situated in the vibrant new district of Nueva Andalucía, known as La Campana, this property is a true gem in a prime residential location. Here, you'll find yourself enveloped by a tapestry of restaurants, boutiques, golf courses, and other conveniences, all within a leisurely stroll. Additionally, you're just a short drive away from the beloved locales of San Pedro, Puerto Banus Harbour, and Puente Romano.

This modern apartment underwent a top-tier renovation in 2022, showcasing a blend of elegance and functionality. It boasts an airy living space seamlessly integrated with an open-plan kitchen, along with two generously sized bedrooms and bathrooms.

What truly sets this property apart is the magnificent terrace, spanning over 40 square meters. This outdoor oasis not only features an invigorating outdoor shower but also offers direct access from every room, providing breathtaking vistas of the Mediterranean Sea and the iconic La Concha mountain.

Moreover, you'll relish the ease of accessing the community swimming pool, conveniently located on the same level, offering you panoramic vistas that are nothing short of spectacular. The building's communal areas are equally impressive, encompassing a fully equipped gym, tranquil chillout zones, and a communal room complete with a kitchen, perfect for hosting gatherings and events.

Positioned in a privileged location, with proximity to schools, golf courses, and excellent transportation links, this property stands as an ideal year-round residence.

# Additional Info

For Rent	Beds: 4	Baths: 2
Type: Penthouse	Area: 217 sq m	Garden
Pool	Setting: Close To Golf	Close To Shops
Close To Sea	Close To Schools	Urbanisation
Orientation: South	Condition: Excellent	Pool: Communal
Climate Control: Air Conditioning	Hot A/C	Cold A/C
Views: Sea	Beach	Urban
Covered Terrace	Lift	Fitted Wardrobes
Near Transport	Private Terrace	WiFi
Ensuite Bathroom	Access for people with reduced mobility	Basement
Furniture: Fully Furnished	Kitchen: Fully Fitted	Garden: Private
Security: Gated Complex	Parking: Underground	Utilities: Electricity
Category: Holiday Homes	Built Area : 217 sq m	

Telephone: +34 637 87 73 78

Email: [info@banusimmo.com](mailto:info@banusimmo.com)

La Reserva Del Alcuzcuz, La Azalia 1 -1B, 29679, Benahavis

*Banus Immo*  
MARBELLA