



3 Bed Townhouse For Sale

€450,000

Mijas, Costa del Sol

Ref: R4744759

Town House for sale in , Mijas with 3 bedrooms, 2 bathrooms, 1 toilet and with orientation south, with communal swimming pool, private garage (2 parking spaces) and communal garden. Regarding property dimensions, it has 250 m² built and 60 m² plot. Has the following facilities amenities near, air conditioning, central heating, partly furnished, fully fitted kitchen, utility room, fireplace, basement, guest room, barbeque, guest toilet, kitchen equipped, sea view, mountain view, laundry room, internet - wi-fi, covered terrace, fitted wardrobes, gated community, garden view, uncovered terrace, glass doors, balcony, good condition, close to town, close to schools, surveillance cameras and pets allowed.

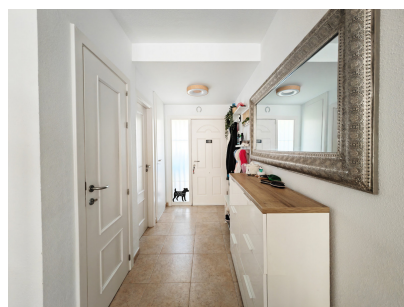
Telephone: +34 637 87 73 78

Email: info@banusimmo.com

La Reserva Del Alczucuz, La Azalia 1 -1B, 29679, Benahavis

Banus Immo
MARBELLA

Gallery



Telephone: +34 637 87 73 78

Email: info@banusimmo.com

La Reserva Del Alcuizcuz, La Azalia 1 -1B, 29679, Benahavis

Banus Immo
MARBELLA

Property Description

Location: Mijas, Costa del Sol, Spain

Town House for sale in , Mijas with 3 bedrooms, 2 bathrooms, 1 toilet and with orientation south, with communal swimming pool, private garage (2 parking spaces) and communal garden. Regarding property dimensions, it has 250 m² built and 60 m² plot. Has the following facilities amenities near, air conditioning, central heating, partly furnished, fully fitted kitchen, utility room, fireplace, basement, guest room, barbeque, guest toilet, kitchen equipped, sea view, mountain view, laundry room, internet - wi-fi, covered terrace, fitted wardrobes, gated community, garden view, uncovered terrace, glass doors, balcony, good condition, close to town, close to schools, surveillance cameras and pets allowed.

Telephone: +34 637 87 73 78

Email: info@banusimmo.com

La Reserva Del Alcuarczuz, La Azalia 1 -1B, 29679, Benahavis

Banus Immo[®]
MARBELLA

Additional Info

For Sale	Beds: 3	Baths: 2.5
Type: Townhouse	Area: 250 sq m	Land Area: 60 sq m
Garden	Pool	Setting: Close To Schools
Orientation: South	Condition: Good	Pool: Communal
Climate Control: Air Conditioning	Central Heating	Fireplace
Views: Sea	Mountain	Garden
Covered Terrace	Fitted Wardrobes	Utility Room
Barbeque	Furniture: Part Furnished	Kitchen: Fully Fitted
Partially Fitted	Garden: Communal	Parking: Private
Built Area : 250 sq m	Land Size : 60 sq m	