



## 2 Bed Apartment For Sale

Calahonda, Costa del Sol

€425,000

Ref: R4724674

Beach frontline apartment!! Rarely available this fantastically located apartment with two bedrooms communal pool private parking and walking distance to everything.

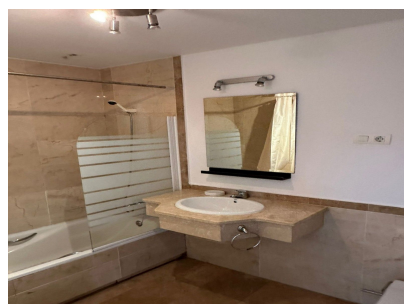
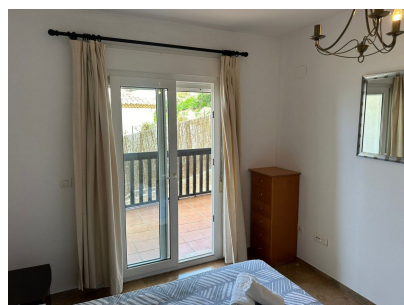
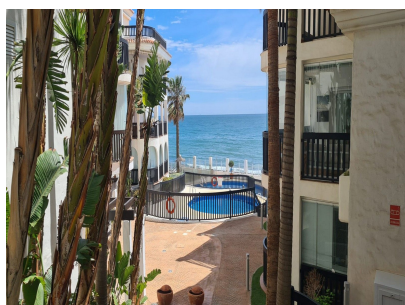
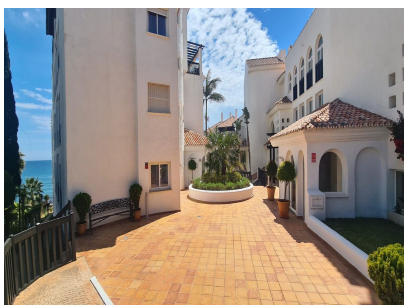
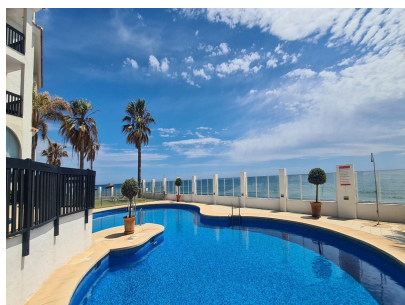
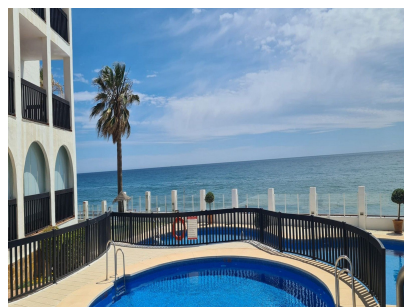
Telephone: +34 637 87 73 78

Email: [info@banusimmo.com](mailto:info@banusimmo.com)

La Reserva Del Alcuzeuz, La Azalia 1 -1B, 29679, Benahavis

*Banus Immo*  
MARBELLA

# Gallery



Telephone: +34 637 87 73 78

Email: [info@banusimmo.com](mailto:info@banusimmo.com)

La Reserva Del Alczucuz, La Azalia 1 -1B, 29679, Benahavis

*Banus Immo*  
MARBELLA

# Property Description

**Location:** Calahonda, Costa del Sol, Spain

Beach frontline apartment!! Rarely available this fantastically located apartment with two bedrooms communal pool private parking and walking distance to everything.

Telephone: +34 637 87 73 78

Email: [info@banusimmo.com](mailto:info@banusimmo.com)

La Reserva Del Alcuarczuz, La Azalia 1 -1B, 29679, Benahavis

*Banus Immo*<sup>®</sup>  
MARBELLA

# Additional Info

For Sale	Beds: 2	Baths: 2
Type: Apartment	Area: 93 sq m	Garden
Pool	Setting: Beachfront	Beachside
Close To Golf	Close To Shops	Close To Sea
Close To Town	Close To Schools	Urbanisation
Front Line Beach Complex	Orientation: South West	Condition: Good
Pool: Communal	Children`s Pool	Climate Control: Air Conditioning
Hot A/C	Cold A/C	Views: Sea
Covered Terrace	Lift	Fitted Wardrobes
Near Transport	Private Terrace	WiFi
Utility Room	Ensuite Bathroom	Marble Flooring
Double Glazing	Furniture: Fully Furnished	Kitchen: Fully Fitted
Garden: Communal	Security: Gated Complex	Entry Phone
Parking: Underground	Utilities: Electricity	Drinkable Water
Category: Beachfront	Holiday Homes	Investment

Luxury

Resale

Built Area : 93 sq m

Telephone: +34 637 87 73 78

Email: [info@banusimmo.com](mailto:info@banusimmo.com)

La Reserva Del Alcuzcuz, La Azalia 1 -1B, 29679, Benahavis

*Banus Immo*<sup>®</sup>  
MARBELLA