



2 Bed Apartment For Sale

Guadalmina Baja, Costa del Sol

€750,000

Ref: R4688896

Beautiful 2 bedroom duplex penthouse in a premium urbanization in Guadalmina-Casasola. Only 800 meters from the beach, this property is also close to all amenities you could need, such as supermarkets, petrol station, pharmacy, padel club.. etc. This apartment is not sold furnished and the garage space and storage room are not included in the price. Don't hesitate to contact us for any further information.

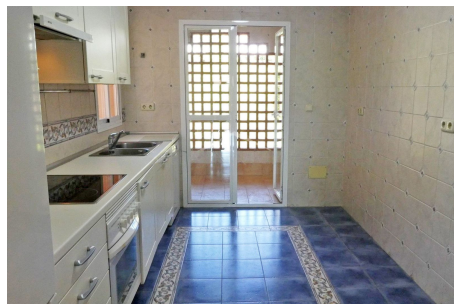
Telephone: +34 637 87 73 78

Email: info@banusimmo.com

La Reserva Del Alcuzcuz, La Azalia 1 -1B, 29679, Benahavis

BanusImmo
MARBELLA

Gallery



Telephone: +34 637 87 73 78

Email: info@banusimmo.com

La Reserva Del Alcuzcuz, La Azalia 1 -1B, 29679, Benahavis

BanusImmo
MARBELLA

Property Description

Location: Guadalmina Baja, Costa del Sol, Spain

Beautiful 2 bedroom duplex penthouse in a premium urbanization in Guadalmina-Casasola. Only 800 meters from the beach, this property is also close to all amenities you could need, such as supermarkets, petrol station, pharmacy, padel club.. etc. This apartment is not sold furnished and the garage space and storage room are not included in the price. Don't hesitate to contact us for any further information.

Additional Info

For Sale	Beds: 2	Baths: 2
Type: Apartment	Area: 140 sq m	Garden
Pool	Setting: Beachside	Close To Golf
Close To Shops	Close To Sea	Close To Schools
Urbanisation	Orientation: South East	Condition: Good
Pool: Communal	Climate Control: Air Conditioning	Pre Installed A/C
Hot A/C	Cold A/C	Views: Garden
Pool	Covered Terrace	Fitted Wardrobes
Private Terrace	Satellite TV	WiFi
Storage Room	Ensuite Bathroom	Marble Flooring
Double Glazing	Fiber Optic	Furniture: Not Furnished
Kitchen: Fully Fitted	Garden: Communal	Security: Gated Complex
24 Hour Security	Parking: Underground	Garage
Category: Luxury	Resale	Built Area : 140 sq m

Telephone: +34 637 87 73 78

Email: info@banusimmo.com

La Reserva Del Alcuarcz, La Azalia 1 -1B, 29679, Benahavis