

3 Bed Villa (Detached) For Sale

€1,895,000

Nueva Andalucía, Costa del Sol

Ref: R4684276

Welcome to this modern villa with a great location with less than 10 minutes walking distance to the beach. The layout is as follows: Ground floor: 2 ensuite double bedrooms, open plan living with a modern kitchen and dining & living room area that leads to the terrace. The garden has a private pool, outdoor kitchen and a pergola you can enjoy. First floor: Master bedroom with an ensuite bathroom and a large private terrace area. This villa is located in the heart of Nueva Andalucia with easy access to the beach, Puerto Banus & San Pedro. It's a great investment property and will generate a very high rental incomes due to the villas AAA+ location.– Keys at the office for easy viewings!

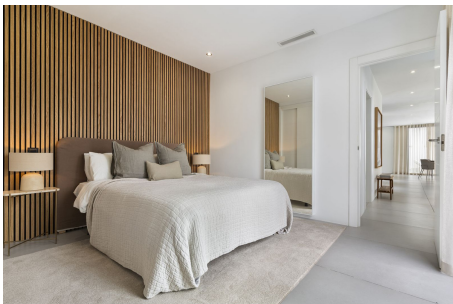
Telephone: +34 637 87 73 78

Email: info@banusimmo.com

La Reserva Del Alczucz, La Azalia 1 -1B, 29679, Benahavis

Banus Immo
MARBELLA

Gallery



Property Description

Location: Nueva Andalucía, Costa del Sol, Spain

Welcome to this modern villa with a great location with less than 10 minutes walking distance to the beach.

The layout is as follows:

Ground floor:

2 ensuite double bedrooms, open plan living with a modern kitchen and dining & living room area that leads to the terrace. The garden has a private pool, outdoor kitchen and a pergola you can enjoy.

First floor:

Master bedroom with an ensuite bathroom and a large private terrace area.

This villa is located in the heart of Nueva Andalucía with easy access to the beach, Puerto Banus & San Pedro. It's a great investment property and will generate a very high rental incomes due to the villas AAA+ location.–

Keys at the office for easy viewings!

Additional Info

For Sale	Beds: 3	Baths: 3
Type: Villa (Detached)	Area: 252 sq m	Land Area: 554 sq m
Garden	Pool	Setting: Close To Golf
Close To Port	Close To Shops	Close To Sea
Close To Town	Close To Schools	Close To Marina
Condition: Recently Renovated	Pool: Private	Climate Control: Air Conditioning
Fitted Wardrobes	Near Transport	Private Terrace
Satellite TV	WiFi	Ensuite Bathroom
Furniture: Fully Furnished	Kitchen: Fully Fitted	Garden: Private
Security: Alarm System	Parking: Street	Utilities: Electricity
Built Area : 252 sq m	Land Size : 554 sq m	