

## 4 Bed Villa (Detached) For Sale

**€700,000**

**La Campana, Costa del Sol**

**Ref: R4681804**

Detached villa with private pool in the area of La Campana, in Nueva Andalucia - Marbella Detached Villa, La Campana, Costa del Sol. 4 Bedrooms, 3 Bathrooms, Built 190 m<sup>2</sup>, Terrace 40 m<sup>2</sup>, Garden/Plot 238 m<sup>2</sup>. Orientation : South. Condition : Excellent. Pool : Private. Climate Control : Air Conditioning. Features : Covered Terrace, Lift, Private Terrace, Storage Room. Garden : Private. Parking : Garage, Covered, Private.

Telephone: +34 637 87 73 78

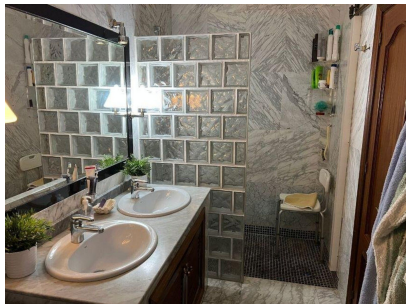
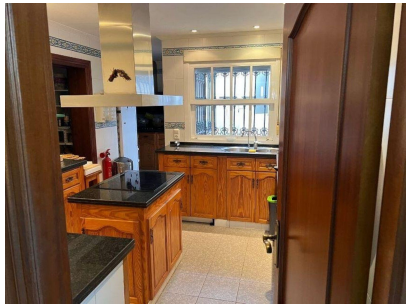
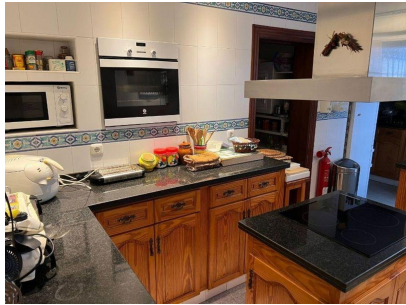
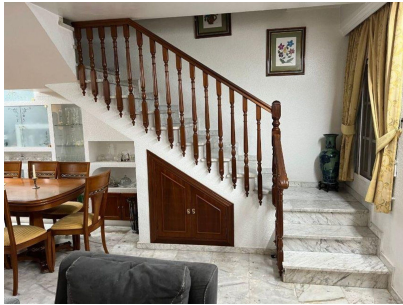
Email: [info@banusimmo.com](mailto:info@banusimmo.com)

La Reserva Del Alczuz, La Azalia 1 -1B, 29679, Benahavis

*Banus Immo*  
MARBELLA



# Gallery



# Property Description

**Location:** La Campana, Costa del Sol, Spain

Detached villa with private pool in the area of La Campana, in Nueva Andalucia - Marbella

Detached Villa, La Campana, Costa del Sol.

4 Bedrooms, 3 Bathrooms, Built 190 m<sup>2</sup>, Terrace 40 m<sup>2</sup>, Garden/Plot 238 m<sup>2</sup>.

Orientation : South.

Condition : Excellent.

Pool : Private.

Climate Control : Air Conditioning.

Features : Covered Terrace, Lift, Private Terrace, Storage Room.

Garden : Private.

Parking : Garage, Covered, Private.

# Additional Info

|                        |                 |                                   |
|------------------------|-----------------|-----------------------------------|
| For Sale               | Beds: 4         | Baths: 3                          |
| Type: Villa (Detached) | Area: 230 sq m  | Land Area: 238 sq m               |
| Garden                 | Pool            | Orientation: South                |
| Condition: Excellent   | Pool: Private   | Climate Control: Air Conditioning |
| Covered Terrace        | Lift            | Private Terrace                   |
| Storage Room           | Garden: Private | Parking: Garage                   |
| Covered                | Private         | Built Area : 230 sq m             |
| Land Size : 238 sq m   |                 |                                   |