

3 Bed Apartment To Rent

€3,500/mth.

Diana Park, Costa del Sol

Ref: R4748131

****This is a long term rental with a 12 month contract**** Spectacular 3 bedroom duplex penthouse - El Campanario
***WALKING DISTANCE TO GOLF COURSE *WALKING DISTANCE TO BARS AND SHOPS *LARGE PRIVATE TERRACE**
***PRIVATE SAUNA *GARAGE PARKING *STOREROOM** We are pleased to bring you this spectacular 3 bedroom duplex penthouse apartment, situated in the sought after development of El Real de El Campanario, which boasts its own excellent clubhouse with spa, tennis courts and restaurant. Just minutes from El Real de El Campanario it has excellent access to the motorway and is 7 minutes drive from Puerto Banus and 40 minutes to Malaga and only 5 minutes drive to the nearest beach. Decorated very tastefully, this beautiful south facing penthouse apartment has stunning views over the landscaped garde...

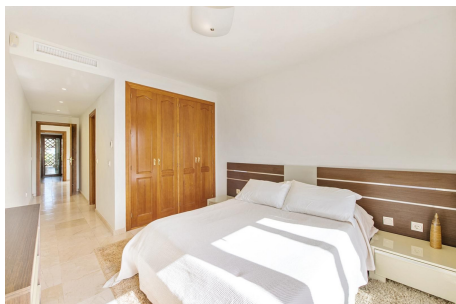
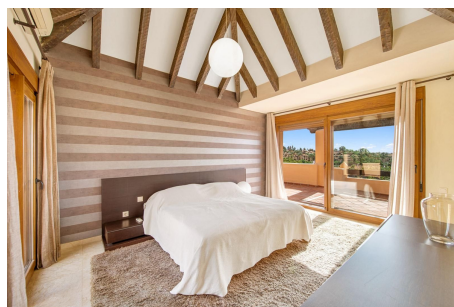
Telephone: +34 637 87 73 78

Email: info@banusimmo.com

La Reserva Del Alcuzcuz, La Azalia 1 -1B, 29679, Benahavis

BanusImmo
MARBELLA

Gallery



Telephone: +34 637 87 73 78

Email: info@banusimmo.com

La Reserva Del Alcuizcuz, La Azalia 1 -1B, 29679, Benahavis

Banus Immo
MARBELLA

Property Description

Location: Diana Park, Costa del Sol, Spain

****This is a long term rental with a 12 month contract****

Spectacular 3 bedroom duplex penthouse - El Campanario

*WALKING DISTANCE TO GOLF COURSE

*WALKING DISTANCE TO BARS AND SHOPS

*LARGE PRIVATE TERRACE

*PRIVATE SAUNA

*GARAGE PARKING

*STOREROOM

We are pleased to bring you this spectacular 3 bedroom duplex penthouse apartment, situated in the sought after development of El Real de El Campanario, which boasts its own excellent clubhouse with spa, tennis courts and restaurant.

Just minutes from El Real de El Campanario it has excellent access to the motorway and is 7 minutes drive from Puerto Banus and 40 minutes to Malaga and only 5 minutes drive to the nearest beach.

Decorated very tastefully, this beautiful south facing penthouse apartment has stunning views over the landscaped gardens, pool, mountains and has sea views. There is a good sized fully fitted kitchen and a large utility room, a large lounge/dining room leading off to two separate terraces, one of which is being used as a dining area. Two of the three bedrooms are situated on the ground floor and both have their own bathrooms. The main bedroom is situated on the top floor and has a separate walk in wardrobe and ensuite bathroom with separate walk in shower. The large 418 m2 wrap around terrace also boasts a sauna, outside shower and barbecue/dining area, as well as a chill out area to sit and enjoy the breath-taking views.

There is private underground parking for 2 cars and a storage room included in the rental.

***References and proof of income essential to rent this property, no pets*.**

Additional Info

For Rent	Beds: 3	Baths: 3
Type: Apartment	Area: 385 sq m	Garden
Pool	Setting: Close To Golf	Close To Shops
Close To Town	Close To Schools	Urbanisation
Orientation: South	Condition: Excellent	Pool: Communal
Children`s Pool	Climate Control: Air Conditioning	Views: Sea
Panoramic	Garden	Pool
Covered Terrace	Lift	Fitted Wardrobes
Private Terrace	Solarium	Utility Room
Ensuite Bathroom	Marble Flooring	Jacuzzi
Double Glazing	Furniture: Fully Furnished	Kitchen: Fully Fitted
Garden: Communal	Landscaped	Security: Gated Complex
Entry Phone	Alarm System	Parking: Underground
More Than One	Utilities: Electricity	Category: Golf

Telephone: +34 637 87 73 78

Email: info@banusimmo.com

La Reserva Del Alcuizcuz, La Azalia 1 -1B, 29679, Benahavis