

4 Bed Townhouse To Rent

€2,600/mth.

Atalaya, Costa del Sol

Ref: R4747690

Spacious 4-bedroom Townhouse for Long term rent. The residential complex 'The Yuccas' in Estepona, designed by the renowned architect Pernet, presents an exquisite townhouse that epitomizes modern living. This property spans a total built area of 124 square meters, thoughtfully distributed across three floors, including a ground floor, an upper floor, and a stunning rooftop deck. The ground floor comprises a lobby, powder room, kitchen, living-dining room, terraces, and service yard. With North and South views and access to common areas, this townhouse offers 4 bedrooms, 3 bathrooms, and multiple floors and terraces, providing ample space and comfort.

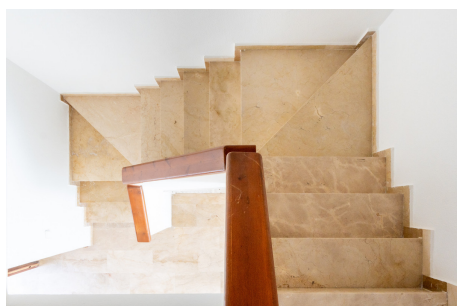
Telephone: +34 637 87 73 78

Email: info@banusimmo.com

La Reserva Del Alcuzcuz, La Azalia 1 -1B, 29679, Benahavis

Banus Immo
MARBELLA

Gallery



Telephone: +34 637 87 73 78

Email: info@banusimmo.com

La Reserva Del Alcuzcuz, La Azalia 1 -1B, 29679, Benahavis

BanusImmo
MARBELLA

Property Description

Location: Atalaya, Costa del Sol, Spain

Spacious 4-bedroom Townhouse for Long term rent.

The residential complex "The Yuccas" in Estepona, designed by the renowned architect Pernet, presents an exquisite townhouse that epitomizes modern living. This property spans a total built area of 124 square meters, thoughtfully distributed across three floors, including a ground floor, an upper floor, and a stunning rooftop deck. The ground floor comprises a lobby, powder room, kitchen, living-dining room, terraces, and service yard. With North and South views and access to common areas, this townhouse offers 4 bedrooms, 3 bathrooms, and multiple floors and terraces, providing ample space and comfort.

Additional Info

For Rent	Beds: 4	Baths: 3
Type: Townhouse	Area: 124 sq m	Garden
Pool	Setting: Close To Golf	Close To Shops
Close To Sea	Close To Town	Condition: Good
Recently Renovated	Recently Refurbished	Pool: Communal
Heated	Climate Control: Air Conditioning	Fireplace
Views: Panoramic	Garden	Pool
Street	Near Transport	Furniture: Fully Furnished
Kitchen: Fully Fitted	Partially Fitted	Garden: Communal
Parking: Communal	Built Area : 124 sq m	