



3 Bed Apartment For Sale

€435,000

Nueva Andalucía, Costa del Sol

Ref: R4675405

Very spacious duplex penthouse in the heart of Nueva Andalucía (Aloha area) in the gated and very secure complex. On the first floor you will find a living room with a fireplace, a 26 m2 terrace, 2 bedrooms with fitted wardrobes, fully equipped kitchen, a bathroom as well as a guest toilet. On the second floor are located a master bedroom with en-suite bathroom, a wardrobe room and a cosy terrace. You can enjoy the rest near the swimming pool or a walk along a nice lake, which is also situated in the complex. A lot of bars, restaurants, shops as well as a padel and tennis club are nearby, in walking distance. 5 minutes drive to Puerto Banus and the beach.

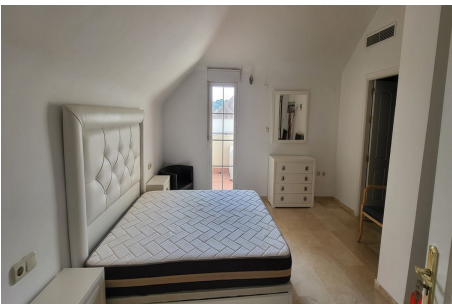
Telephone: +34 637 87 73 78

Email: info@banusimmo.com

La Reserva Del Alcuzcuz, La Azalia 1 -1B, 29679, Benahavis

Banus Immo
MARBELLA

Gallery



Telephone: +34 637 87 73 78

Email: info@banusimmo.com

La Reserva Del Alcuizcuz, La Azalia 1 -1B, 29679, Benahavis

Banus Immo
MARBELLA

Property Description

Location: Nueva Andalucía, Costa del Sol, Spain

Very spacious duplex penthouse in the heart of Nueva Andalucía (Aloha area) in the gated and very secure complex.

On the first floor you will find a living room with a fireplace, a 26 m² terrace, 2 bedrooms with fitted wardrobes, fully equipped kitchen, a bathroom as well as a guest toilet

On the second floor are located a master bedroom with en-suite bathroom, a wardrobe room and a cosy terrace.

You can enjoy the rest near the swimming pool or a walk along a nice lake, which is also situated in the complex.

A lot of bars, restaurants, shops as well as a padel and tennis club are nearby, in walking distance. 5 minutes drive to Puerto Banus and the beach.

Additional Info

| | | |
|----------------------------|--------------------------|----------------------|
| For Sale | Beds: 3 | Baths: 2.5 |
| Type: Apartment | Area: 188 sq m | Garden |
| Pool | Setting: Commercial Area | Close To Port |
| Close To Shops | Close To Sea | Close To Town |
| Close To Schools | Close To Marina | Urbanisation |
| Orientation: South West | Condition: Good | Pool: Communal |
| Climate Control: Hot A/C | Cold A/C | Fireplace |
| Views: Garden | Private Terrace | WiFi |
| Marble Flooring | Double Glazing | Fiber Optic |
| Furniture: Fully Furnished | Kitchen: Fully Fitted | Garden: Communal |
| Security: Gated Complex | 24 Hour Security | Parking: Underground |
| Utilities: Electricity | Category: Holiday Homes | Investment |
| Built Area : 188 sq m | | |

Telephone: +34 637 87 73 78

Email: info@banusimmo.com

La Reserva Del Alczucuz, La Azalia 1 -1B, 29679, Benahavis

Banus Immo
MARBELLA