



2 Bed Penthouse For Sale

€425,000

New Golden Mile, Costa del Sol

Ref: R4316965

This beautiful 2 bedroom duplex penthouse is located in the New Golden Mile within walking distance to many amenities and a short drive from the Flamingos golf club, the Hotel Antara Villa Padierna and the Saladillo Beach. The main level of this floor consists of a bright living area with an open plan kitchen leading directly to the main terrace which offers fantastic views. On this level, you will also find the two bedrooms both with ensuite bathrooms, one with a bathtub and the other with a large shower. Upstairs you will find a large solarium with amazing open views over the Mediterranean Sea, a perfect place to relax and unwind. Overall this place is filled with light given its orientation, and light contemporary design. The residents of this penthouse gain access to the St Vis...

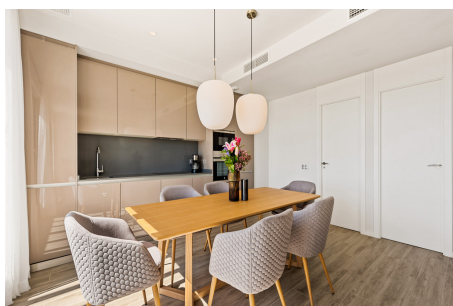
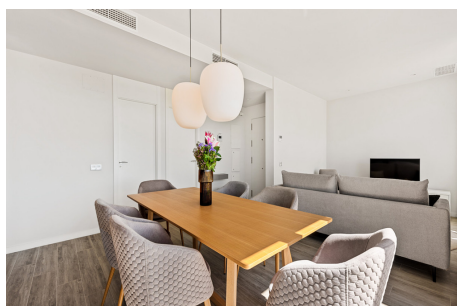
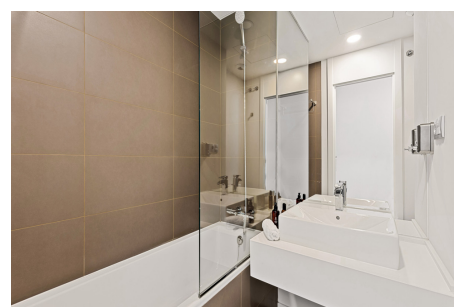
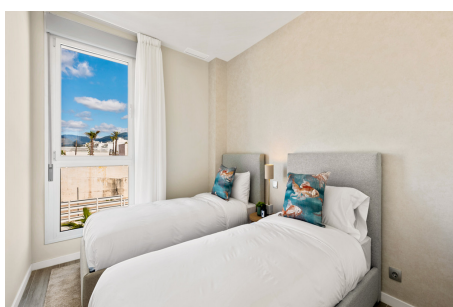
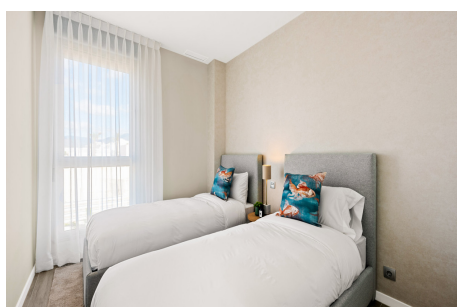
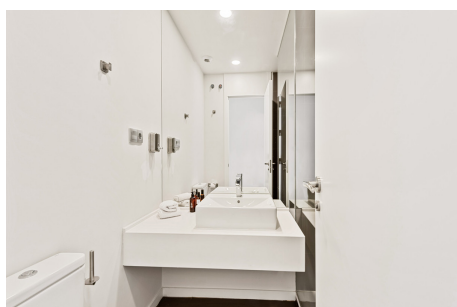
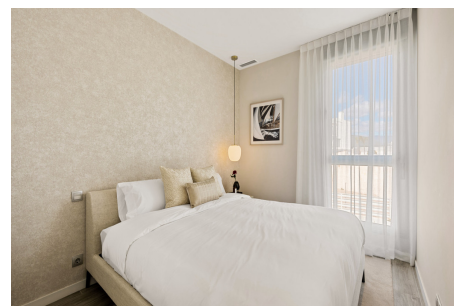
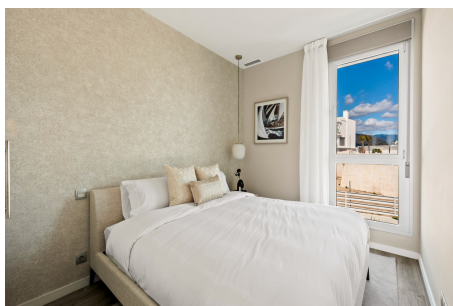
Telephone: +34 637 87 73 78

Email: info@banusimmo.com

La Reserva Del Alcuizcuz, La Azalia 1 -1B, 29679, Benahavis

Banus Immo
MARBELLA

Gallery



Telephone: +34 637 87 73 78

Email: info@banusimmo.com

La Reserva Del Alucuz, La Azalia 1 -1B, 29679, Benahavis

Banus Immo
MARBELLA

Property Description

Location: New Golden Mile, Costa del Sol, Spain

This beautiful 2 bedroom duplex penthouse is located in the New Golden Mile within walking distance to many amenities and a short drive from the Flamingos golf club, the Hotel Antara Villa Padierna and the Saladillo Beach.

The main level of this floor consists of a bright living area with an open plan kitchen leading directly to the main terrace which offers fantastic views. On this level, you will also find the two bedrooms both with ensuite bathrooms, one with a bathtub and the other with a large shower.

Upstairs you will find a large solarium with amazing open views over the Mediterranean Sea, a perfect place to relax and unwind.

Overall this place is filled with light given its orientation, and light contemporary design.

The residents of this penthouse gain access to the St Vista Clubhouse and benefit from numerous leisure activities and other amenities in the area.

Additional Info

For Sale	Beds: 2	Baths: 2
Type: Penthouse	Area: 140 sq m	Garden
Pool	Setting: Close To Golf	Close To Sea
Orientation: South	Pool: Communal	Views: Sea
Covered Terrace	Lift	Fitted Wardrobes
Solarium	Ensuite Bathroom	Double Glazing
Kitchen: Fully Fitted	Partially Fitted	Garden: Communal
Parking: Communal	Category: Luxury	Built Area : 140 sq m