



2 Bed Apartment To Rent

€1,750/mth.

Cortijo Blanco, Costa del Sol

Ref: R4633576

Available 2 bedrooms apartment is located in Cortijo Blanco, San Pedro. Situated in the heart of Costa Del Sol. With its prime location, it provides easy access to all the amenities and attractions that Marbella has to offer. Walking distance to the beach and all amenities. The apartment features 2 spacious bedrooms and 1 modern bathroom, making it an ideal choice for a small family or a couple looking for a comfortable living space. The built area of 61m² ensures ample space for relaxation and entertainment. One of the standout features of this apartment is the communal pool and garden, where residents can enjoy a refreshing swim or simply relax in the sun. The private garage provides secure parking for your vehicle, ensuring peace of mind. The kitchen is fully equipped with. The apartmen...

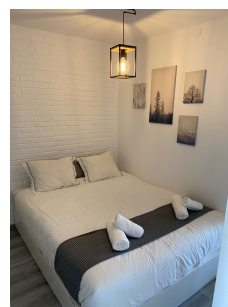
Telephone: +34 637 87 73 78

Email: info@banusimmo.com

La Reserva Del Aluczcuz, La Azalia 1 -1B, 29679, Benahavis

Banus Immo
MARBELLA

Gallery



Telephone: +34 637 87 73 78

Email: info@banusimmo.com

La Reserva Del Alucuz, La Azalia 1 -1B, 29679, Benahavis

Banus Immo
MARBELLA

Property Description

Location: Cortijo Blanco, Costa del Sol, Spain

Available 2 bedrooms apartment is located in Cortijo Blanco, San Pedro. Situated in the heart of Costa Del Sol. With its prime location, it provides easy access to all the amenities and attractions that Marbella has to offer. Walking distance to the beach and all amenities.

The apartment features 2 spacious bedrooms and 1 modern bathroom, making it an ideal choice for a small family or a couple looking for a comfortable living space. The built area of 61m² ensures ample space for relaxation and entertainment.

One of the standout features of this apartment is the communal pool and garden, where residents can enjoy a refreshing swim or simply relax in the sun. The private garage provides secure parking for your vehicle, ensuring peace of mind.

The kitchen is fully equipped with. The apartment is also conveniently located close to a children's playground, making it an ideal choice for families with young children.

Additional Info

For Rent	Beds: 2	Baths: 1
Type: Apartment	Area: 61 sq m	Garden
Pool	Setting: Close To Shops	Close To Town
Orientation: South	Condition: Good	Pool: Communal
Kitchen: Partially Fitted	Garden: Communal	Parking: Private
Built Area : 61 sq m		