



## 2 Bed Apartment For Sale

**€950,000**

**Puerto Banús, Costa del Sol**

**Ref: R4647760**

Charming and lovely two-bedroom apartment in La Alcazaba, Puerto Banús. This luminous and spacious living room opens to a large terrace with views of the pool area and the beautiful tropical gardens. The apartment comes with its own garage space, offering independent access from the street. This prestigious complex offers indoor and outdoor pools, a gym, sauna, a Turkish bath, an on-site cafe and restaurant, 24-hour reception, and security, along with all the advantages and services they entail. Just 100 meters from the beach and the Puerto Banus marina, enjoy the nearby shopping area with bars and restaurants catering to every taste

Telephone: +34 637 87 73 78

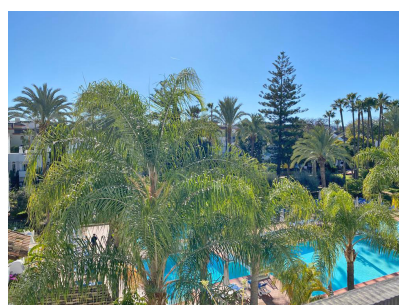
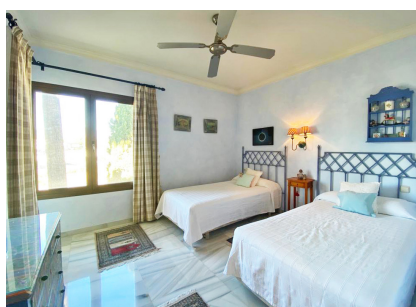
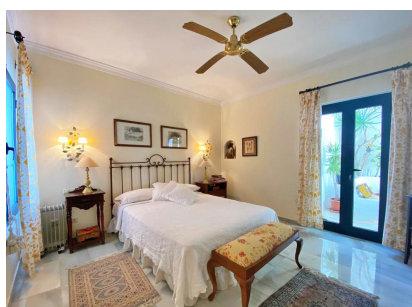
Email: [info@banusimmo.com](mailto:info@banusimmo.com)

La Reserva Del Alcuzcuz, La Azalia 1 -1B, 29679, Benahavis

*BanusImmo*  
MARBELLA



# Gallery



Telephone: +34 637 87 73 78

Email: [info@banusimmo.com](mailto:info@banusimmo.com)

La Reserva Del Alcuzcuz, La Azalia 1 -1B, 29679, Benahavis

*Banus Immo*  
MARBELLA

# Property Description

**Location:** Puerto Banús, Costa del Sol, Spain

Charming and lovely two-bedroom apartment in La Alcazaba, Puerto Banús. This luminous and spacious living room opens to a large terrace with views of the pool area and the beautiful tropical gardens. The apartment comes with its own garage space, offering independent access from the street.

This prestigious complex offers indoor and outdoor pools, a gym, sauna, a Turkish bath, an on-site cafe and restaurant, 24-hour reception, and security, along with all the advantages and services they entail. Just 100 meters from the beach and the Puerto Banus marina, enjoy the nearby shopping area with bars and restaurants catering to every taste

# Additional Info

For Sale	Beds: 2	Baths: 2
Type: Apartment	Area: 124 sq m	Garden
Pool	Setting: Beachfront	Beachside
Close To Port	Close To Shops	Close To Sea
Close To Town	Close To Schools	Orientation: South
Condition: Good	Pool: Communal	Climate Control: Air Conditioning
Views: Sea	Mountain	Port
Panoramic	Garden	Pool
Private Terrace	Kitchen: Fully Fitted	Garden: Communal
Security: 24 Hour Security	Parking: Private	Category: Beachfront
Built Area : 124 sq m		