



Plot For Sale

Sotogrande, Costa del Sol

€440,000

Ref: R4502332

PLOT WITH PROJECT AND BUILDING LICENCE INCLUDED BUILD YOUR DREAM VILLA WITHIN BAHIA DE LAS ROCAS, OFFERING PANORAMIC SEA VIEWS! Situated in an elevated position surrounded by nature and offering breathtaking panoramic Mediterranean Sea, Gibraltar and North African Coast views and walking distance (900 meters) to a beautiful sandy beach! Only 5 minutes drive from Sotogrande, where you can find all kinds of services such as restaurants, shopping centers, hospitals, international schools, golf courses and the port of Sotogrande. The Real Club Valderrama is one of the best known golf clubs in the world. It is located in the resort of Sotogrande, San Roque in the Andalusia region of southern Spain, a few miles from Gibraltar, and has a single 18-hole course, along with a 9-hole par 3 course...

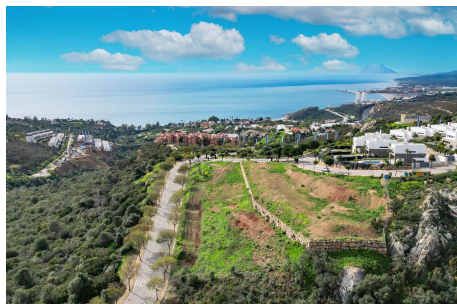
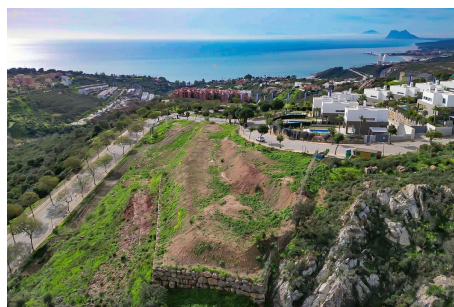
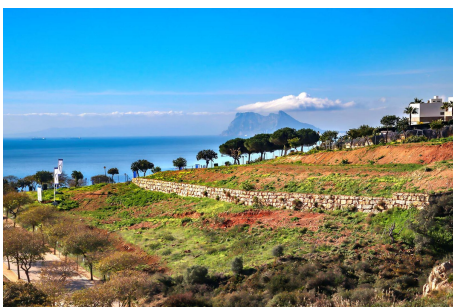
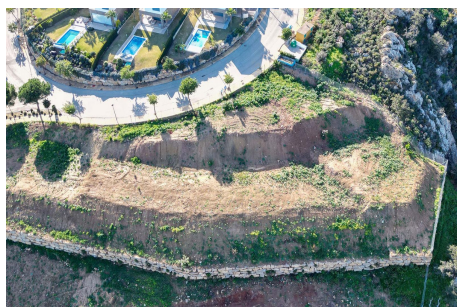
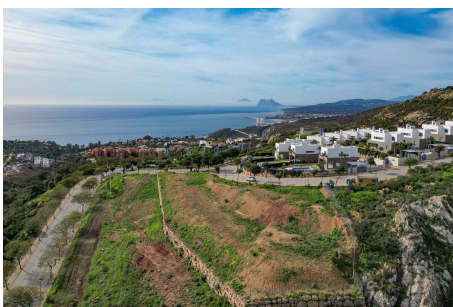
Telephone: +34 637 87 73 78

Email: info@banusimmo.com

La Reserva Del Alcuzcuz, La Azalia 1 -1B, 29679, Benahavis

Banus Immo
MARBELLA

Gallery



Property Description

Location: Sotogrande, Costa del Sol, Spain

PLOT WITH PROJECT AND BUILDING LICENCE INCLUDED

BUILD YOUR DREAM VILLA WITHIN BAHIA DE LAS ROCAS, OFFERING PANORAMIC SEA VIEWS!

Situated in an elevated position surrounded by nature and offering breathtaking panoramic Mediterranean Sea, Gibraltar and North African Coast views and walking distance (900 meters) to a beautiful sandy beach!

Only 5 minutes drive from Sotogrande, where you can find all kinds of services such as restaurants, shopping centers, hospitals, international schools, golf courses and the port of Sotogrande.

The Real Club Valderrama is one of the best known golf clubs in the world. It is located in the resort of Sotogrande, San Roque in the Andalusia region of southern Spain, a few miles from Gibraltar, and has a single 18-hole course, along with a 9-hole par 3 course.

Great investment for those families looking for their dream home in a quiet area, surrounded by nature and just 5 minutes from all kinds of amenities.

Distances:

Málaga International Airport: 45 min

Gibraltar International Airport: 15 min.

Marbella: 25 min.

Estepona: 15 min.

Sotogrande: 5 min.

Additional Info

For Sale	Type: Plot	Land Area: 977 sq m
Setting: Close To Golf	Close To Port	Close To Shops
Close To Sea	Close To Town	Close To Schools
Close To Forest	Close To Marina	Orientation: South West
Condition: Excellent	Views: Sea	Mountain
Panoramic	Category: Bargain	Golf
Holiday Homes	Investment	Luxury
Contemporary	Land Size : 977 sq m	

Telephone: +34 637 87 73 78

Email: info@banusimmo.com

La Reserva Del Alcuzcuz, La Azalia 1 -1B, 29679, Benahavis