



3 Bed Apartment For Sale

€995,000

Nueva Andalucía, Costa del Sol

Ref: R4624807

The new residential includes 98 apartments distributed in small three-storey buildings in a contemporary Mediterranean style. The 2 and 3 bedroom apartments and the wonderful penthouses and duplexes are all surrounded by carefully landscaped gardens and four communal swimming pools. All homes have stunning panoramic views from their generous terraces and landscaped lounges. The architecture in the common areas is inspired by the avant-garde aesthetic concepts 'Boho Chic' and 'Country Chic' in which natural materials and colours are combined to integrate into the landscape in a balanced way and favour a relaxed living environment and escape. Phase 1: June 2023 && Sold! Phase 2: October 2023 && Sold! Phase 3 + 4: February 2024

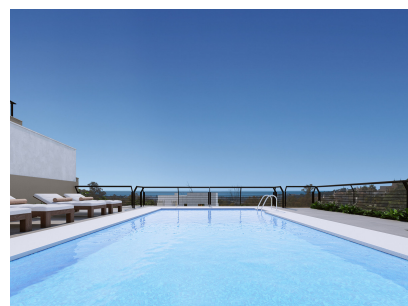
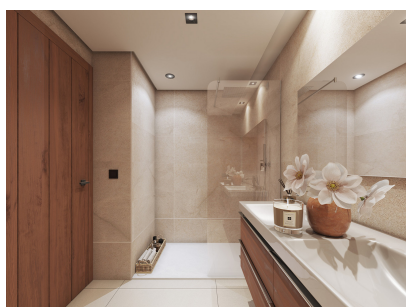
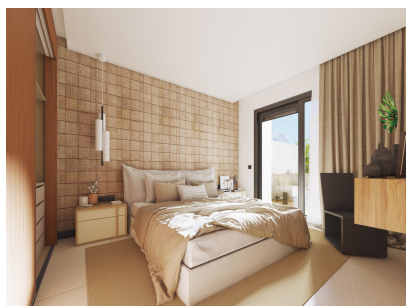
Telephone: +34 637 87 73 78

Email: info@banusimmo.com

La Reserva Del Alczucuz, La Azalia 1 -1B, 29679, Benahavis

Banus Immo
MARBELLA

Gallery



Telephone: +34 637 87 73 78

Email: info@banusimmo.com

La Reserva Del Alcuizcuz, La Azalia 1 -1B, 29679, Benahavis

Banus Immo
MARBELLA

Property Description

Location: Nueva Andalucía, Costa del Sol, Spain

The new residential includes 98 apartments distributed in small three-storey buildings in a contemporary Mediterranean style.

The 2 and 3 bedroom apartments and the wonderful penthouses and duplexes are all surrounded by carefully landscaped gardens and four communal swimming pools. All homes have stunning panoramic views from their generous terraces and landscaped lounges. The architecture in the common areas is inspired by the avant-garde aesthetic concepts 'Boho Chic' and 'Country Chic' in which natural materials and colours are combined to integrate into the landscape in a balanced way and favour a relaxed living environment and escape.

Phase 1: June 2023 && Sold!

Phase 2: October 2023 && Sold!

Phase 3 + 4: February 2024

Additional Info

For Sale	Beds: 3	Baths: 2
Type: Apartment	Area: 116 sq m	Garden
Pool	Setting: Close To Golf	Close To Shops
Close To Town	Close To Schools	Condition: New Construction
Pool: Communal	Views: Golf	Panoramic
Garden	Pool	Lake
Private Terrace	Garden: Communal	Parking: Communal
Built Area : 116 sq m		