

## 4 Bed Villa (Detached) For Sale

**€3,695,000**

**Benahavís, Costa del Sol**

**Ref: R4637905**

OFF-PLAN LUXURY CONTEMPORARY ECOLOGICAL VILLA WITH PANORAMIC VIEWS IN MONTE MAYOR – BENAHAVIS – Total constructed on 3 floors with a total constructed area of 1.334,00 m2 This contemporary luxury villa simply has everything ... it will be built on 2 or 3 floor, clients choice, on a plot of approx 7.825 m2 in Monte Mayor, Benahavis a luxury urbanization in a green area. Ground floor: double height hall with staircase, pneumatic elevator, and guest toilet, a large living/dining room giving out to the large terrace with pool and chill-out area, fully equipped kitchen with a pantry. There is also a bedroom with ensuite bathroom on the ground floor. First floor: Master bedroom with en-suite bathroom with 2 dressing rooms and 2 private terraces On this floor, we have also another 2 bedrooms wit...

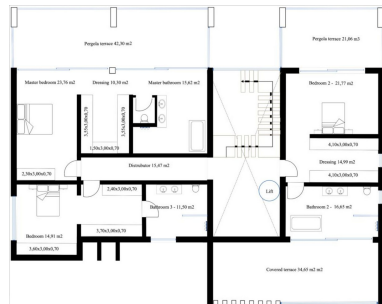
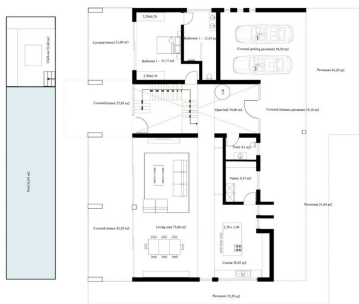
Telephone: +34 637 87 73 78

Email: [info@banusimmo.com](mailto:info@banusimmo.com)

La Reserva Del Aluczcuz, La Azalia 1 -1B, 29679, Benahavis

*BanusImmo*  
MARBELLA

# Gallery



Telephone: +34 637 87 73 78  
 Email: info@banusimmo.com  
 La Reserva Del Alcuarcz, La Azalia 1 -1B, 29679, Benahavis

# Property Description

**Location:** Benahavís, Costa del Sol, Spain

OFF-PLAN LUXURY CONTEMPORARY ECOLOGICAL VILLA WITH PANORAMIC VIEWS IN MONTE MAYOR – BENAHAVIS – Total constructed on 3 floors with a total constructed area of 1.334,00 m<sup>2</sup>  
This contemporary luxury villa simply has everything ... it will be built on 2 or 3 floor, clients choice, on a plot of approx 7.825 m<sup>2</sup> in Monte Mayor, Benahavis a luxury urbanization in a green area.

Ground floor: double height hall with staircase, pneumatic elevator, and guest toilet, a large living/dining room giving out to the large terrace with pool and chill-out area, fully equipped kitchen with a pantry. There is also a bedroom with ensuite bathroom on the ground floor.

First floor: Master bedroom with en-suite bathroom with 2 dressing rooms and 2 private terraces On this floor, we have also another 2 bedrooms with ensuite bathrooms and dressing. One of the bedrooms has access to the terrace.

Basement; hall, garage, toilet, sauna, games room, storage room and technical pool room.

Construction time 12-14 months after licenses!

The photos of the bathrooms and kitchens are examples, of how we could build this for you, the final decision will be yours. Example of some of the specifications,

- Interior and exterior floor tiles from GRESPANIA 600x600 – 800x800 - 1200x1200 (Colour and size to choose)
- Bathroom walls with COVERLAM plates (GRESPANIA) 2700X1200 (Colour to choose)
- Bathrooms from ROCA or similar
- Kitchen with steel frame doors covered with COVERLAM and kitchen island from COVERLAM
- Aerothermia/airconditioning
- Underfloor electric heating in the bathrooms
- Underfloor hydraulic heating on ground floor and first floor
- Ceiling high windows with a sunken track, 5+5/chamber/6+6
- Ceiling high and 1-meter-wide interior doors
- Ceiling high pivot door and 1,50 wide
- Fully fitted kitchen
- Household appliances from Bosch or similar
- 20 solar panels
- 2 X 10kW batteries
- Car charger
- Domotica
- Electric sun blinds in living room and kitchen
- Dusk till dawn lights on outside
- LED lights in driveway
- LED ceiling lights in full villa
- Heated pool

Optional

- Full kitchen from COVERLAM with aluminum frame doors (Price on request)
- Full basement/garage/games room, extra bedroom and bathroom (Price on request)

We are a construction company, Key-in-Hand, that can design and construct any possibility you can think of. If you do not see a design of us that you like we design a totally new villa for you according to your ideas and input.

Although we prefer to construct ecological building, we can construct from traditional construction to ecological constructions it all depends on you.

#### INCLUDED

- Plot
- Basic & technical architects project
- Construction licenses
- Full construction

# Additional Info

For Sale	Beds: 4	Baths: 6
Type: Villa (Detached)	Area: 1284 sq m	Land Area: 7825 sq m
Garden	Pool	Setting: Suburban
Mountain Pueblo	Close To Golf	Close To Forest
Urbanisation	Orientation: East	South East
South	South West	Condition: New Construction
Pool: Private	Heated	Climate Control: Air Conditioning
Hot A/C	Cold A/C	U/F Heating
U/F/H Bathrooms	Views: Mountain	Country
Panoramic	Garden	Pool
Urban	Street	Covered Terrace
Lift	Fitted Wardrobes	Private Terrace
WiFi	Sauna	Games Room
Tennis Court	Storage Room	Utility Room
Ensuite Bathroom	Access for people with reduced mobility	Double Glazing

Domotics	Restaurant On Site	Basement
Fiber Optic	Furniture: Optional	Kitchen: Fully Fitted
Garden: Private	Easy Maintenance	Security: Gated Complex
Electric Blinds	Entry Phone	Alarm System
24 Hour Security	Safe	Parking: Underground
Garage	Covered	Open
More Than One	Private	Utilities: Electricity
Drinkable Water	Telephone	Photovoltaic solar panels
Solar water heating	Category: Golf	Holiday Homes
Investment	Luxury	Off Plan
Contemporary	Built Area : 1284 sq m	Land Size : 7825 sq m

Telephone: +34 637 87 73 78

Email: [info@banusimmo.com](mailto:info@banusimmo.com)

La Reserva Del Alczucz, La Azalia 1 -1B, 29679, Benahavis

*Banus Immo*  
MARBELLA