

4 Bed Villa (Detached) For Sale

€2,695,000

Las Chapas, Costa del Sol

Ref: R4629559

OFF-PLAN – ECOLOGICAL LUXURY CONTEMPORARY VILLA - KEY-IN-HAND PROJECT – LAS CHAPAS – MARBELLA and consisting of out 3/ bedrooms with 3/4 ensuite bathrooms and 1 guest toilet. Ground floor: covered entrance, entrance, guest toilet, staircase and lift to the basement/garage, elevator room, living/dining area, staircase to the 1st floor, big open plan kitchen, distributor with build-in wardrobe, and a double bedroom with ensuite bathroom. There are plenty of covered terraces, terraces, and sitting areas with a heated infinity pool. First floor: the elevator or staircase brings you to the first floor with the distributor, a double bedroom with the distributor, and a build-in wardrobe and ensuite bathroom. On the other side of the villa, you have the master bedroom with a dressing and master b...

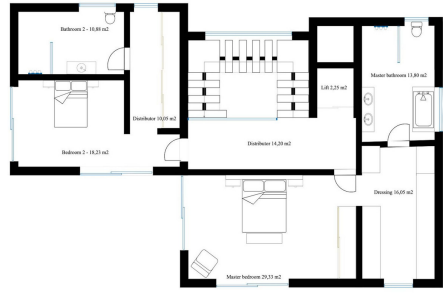
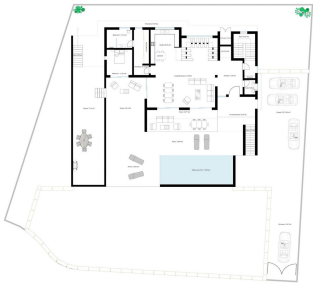
Telephone: +34 637 87 73 78

Email: info@banusimmo.com

La Reserva Del Aluczcuz, La Azalia 1 -1B, 29679, Benahavis

Banus Immo
MARBELLA

Gallery



Telephone: +34 637 87 73 78

Email: info@banusimmo.com

La Reserva Del Alucuzcuz, La Azalia 1 -1B, 29679, Benahavis

Property Description

Location: Las Chapas, Costa del Sol, Spain

OFF-PLAN – ECOLOGICAL LUXURY CONTEMPORARY VILLA - KEY-IN-HAND PROJECT – LAS CHAPAS – MARBELLA and consisting of out 3/ bedrooms with 3/4 ensuite bathrooms and 1 guest toilet.

Ground floor: covered entrance, entrance, guest toilet, staircase and lift to the basement/garage, elevator room, living/dining area, staircase to the 1st floor, big open plan kitchen, distributor with build-in wardrobe, and a double bedroom with ensuite bathroom. There are plenty of covered terraces, terraces, and sitting areas with a heated infinity pool.

First floor: the elevator or staircase brings you to the first floor with the distributor, a double bedroom with the distributor, and a build-in wardrobe and ensuite bathroom. On the other side of the villa, you have the master bedroom with a dressing and master bedroom. Both bedrooms have access to a private terrace.

Square meters on the floor plans are useful square meters. If you need a fourth bedroom with a bathroom this would be easy to create in the basement with an English patio to get natural light without any extra cost to the client!

Basement/garage: garage, distributor, elevator, gymnasium, technical room, cinema room and storage room.

Clients can still adapt the outside and floor plans of the villa according to their preferences.

Some of the specifications:

- High quality windows with glass of 5+5/16/6+6
- Fully fitted kitchen with aluminum frame doors and covered with COVERLAM
- White goods from BOSCH
- Aerothermie/airconditioning
- Underfloor heating
- Bathrooms from ROCA – GEBERIT – VILLEROY BOCH or similar
- Bathroom walls fitted out with COVERLAN wall plates of 1200x2700
- Interior and exterior floor with high quality tiles from GRESPANIA 600X600 -800X800 – 1200X1200
- Exterior wall cladding from COVERLAM
- Elevator from Schindler
- 20 voltaic panels
- 2 batteries of 10kW each
- Car charger

Included are plot, project, licenses, first occupation licenses and full construction.

Pictures of kitchen and bathrooms are just examples of how it could be! Final choice will be that from the client!

We are a construction company, Key-in-Hand, that can design and construct any possibility you can think of. If you do not see a design of us that you like we design a totally new villa for you according to your ideas and input.

Although we prefer to construct ecological building, we can construct from traditional construction to

ecological constructions it all depends on you.

Telephone: +34 637 87 73 78

Email: info@banusimmo.com

La Reserva Del Alcuzcuz, La Azalia 1 -1B, 29679, Benahavis

Banus Immo[®]
MARBELLA

Additional Info

For Sale	Beds: 4	Baths: 4
Type: Villa (Detached)	Area: 1130 sq m	Land Area: 2550 sq m
Garden	Pool	Setting: Suburban
Commercial Area	Close To Port	Close To Shops
Close To Sea	Close To Town	Close To Schools
Orientation: South	Condition: New Construction	Pool: Private
Heated	Climate Control: Air Conditioning	Hot A/C
Cold A/C	U/F Heating	U/F/H Bathrooms
Views: Country	Panoramic	Pool
Street	Covered Terrace	Lift
Fitted Wardrobes	Near Transport	Private Terrace
Solarium	WiFi	Gym
Games Room	Storage Room	Utility Room
Ensuite Bathroom	Access for people with reduced mobility	Jacuzzi
Double Glazing	Basement	Fiber Optic

Furniture: Optional	Kitchen: Fully Fitted	Garden: Private
Easy Maintenance	Security: Electric Blinds	Entry Phone
Alarm System	Safe	Parking: Underground
Garage	Covered	Open
More Than One	Private	Utilities: Electricity
Drinkable Water	Telephone	Photovoltaic solar panels
Solar water heating	Category: Investment	Luxury
Off Plan	Contemporary	Built Area : 1130 sq m
Land Size : 2550 sq m		

Telephone: +34 637 87 73 78

Email: info@banusimmo.com

La Reserva Del Alcuzcuz, La Azalia 1 -1B, 29679, Benahavis

BanusImmo
MARBELLA