

2 Bed Apartment For Sale

€390,000

Atalaya, Costa del Sol

Ref: R4624462

Middle Floor Apartment, Atalaya, Costa del Sol. 2 Bedrooms, 2 Bathrooms, Built 114 m², Terrace 40 m². Setting : Frontline Golf, Close To Golf, Close To Shops, Close To Schools, Urbanisation. Orientation : South. Condition : Excellent. Pool : Communal, Indoor, Heated. Climate Control : Air Conditioning, U/F/H Bathrooms. Views : Sea, Mountain, Panoramic, Garden. Features : Covered Terrace, Lift, Fitted Wardrobes, Private Terrace, Sauna, Storage Room, Utility Room, Ensuite Bathroom, Marble Flooring, Double Glazing, 24 Hour Reception. Kitchen : Fully Fitted. Garden : Communal. Security : Gated Complex, Entry Phone, 24 Hour Security. Parking : Underground, Garage, More Than One. Utilities : Electricity. Category : Bargain, Investment.

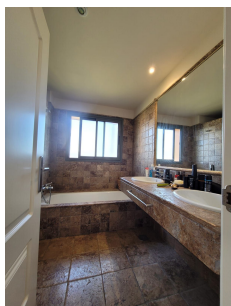
Telephone: +34 637 87 73 78

Email: info@banusimmo.com

La Reserva Del Alcuzeuz, La Azalia 1 -1B, 29679, Benahavis

Banus Immo
MARBELLA

Gallery



Telephone: +34 637 87 73 78

Email: info@banusimmo.com

La Reserva Del Alcuizcuz, La Azalia 1 -1B, 29679, Benahavis

BanusImmo
MARBELLA

Property Description

Location: Atalaya, Costa del Sol, Spain

Middle Floor Apartment, Atalaya, Costa del Sol.

2 Bedrooms, 2 Bathrooms, Built 114 m², Terrace 40 m².

Setting : Frontline Golf, Close To Golf, Close To Shops, Close To Schools, Urbanisation.

Orientation : South.

Condition : Excellent.

Pool : Communal, Indoor, Heated.

Climate Control : Air Conditioning, U/F/H Bathrooms.

Views : Sea, Mountain, Panoramic, Garden.

Features : Covered Terrace, Lift, Fitted Wardrobes, Private Terrace, Sauna, Storage Room, Utility Room, Ensuite Bathroom, Marble Flooring, Double Glazing, 24 Hour Reception.

Kitchen : Fully Fitted.

Garden : Communal.

Security : Gated Complex, Entry Phone, 24 Hour Security.

Parking : Underground, Garage, More Than One.

Utilities : Electricity.

Category : Bargain, Investment.

Additional Info

For Sale	Beds: 2	Baths: 2
Type: Apartment	Area: 154 sq m	Garden
Pool	Setting: Frontline Golf	Close To Golf
Close To Shops	Close To Schools	Urbanisation
Orientation: South	Condition: Excellent	Pool: Communal
Indoor	Heated	Climate Control: Air Conditioning
U/F/H Bathrooms	Views: Sea	Mountain
Panoramic	Garden	Covered Terrace
Lift	Fitted Wardrobes	Private Terrace
Sauna	Storage Room	Utility Room
Ensuite Bathroom	Marble Flooring	Double Glazing
24 Hour Reception	Kitchen: Fully Fitted	Garden: Communal
Security: Gated Complex	Entry Phone	24 Hour Security
Parking: Underground	Garage	More Than One
Utilities: Electricity	Category: Bargain	Investment

Built Area : 154 sq m

Telephone: +34 637 87 73 78

Email: info@banusimmo.com

La Reserva Del Alcuzcuz, La Azalia 1 -1B, 29679, Benahavis

Banus Immo[®]
MARBELLA