



6 Bed Villa (Detached) For Sale

€4,500,000

Nueva Andalucía, Costa del Sol

Ref: R3053491

SPECTACULAR VILLA PROJECT ON LARGE PLOT!!! Very attractive project of a grand villa to be developed in Atalaya de Rio Verde, a tranquil residential area close to Puerto Banus. The neighbourhood stands out for its important villas, large gardens, its neatly kept streets and privacy. All spaces in this house will be an extra large size yet withholding the feel of a friendly family house with details of rustic design integrated with modernity. The emphasis is put on large floor to ceiling windows and doors to allow fusion with the exterior. Two large bedroom suites are the commanding spaces on upper floor, the master suite having two spacious his/hers walk-in closets and additional to the master bathroom an additional WC area. Special rolling shutters on the bedroom windows allow the regula...

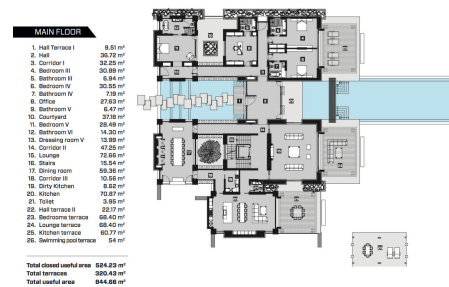
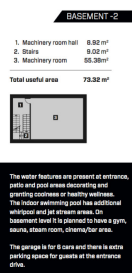
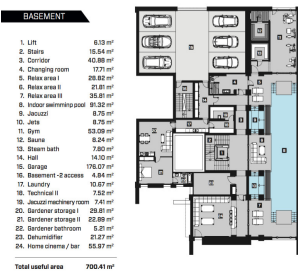
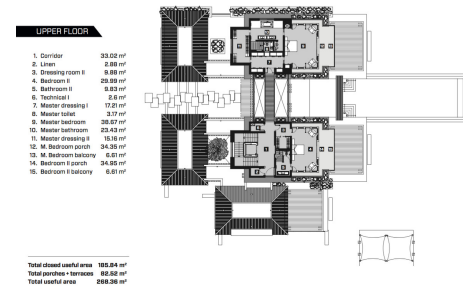
Telephone: +34 637 87 73 78

Email: info@banusimmo.com

La Reserva Del Alcuzeuz, La Azalia 1 -1B, 29679, Benahavis

Banus Immo
MARBELLA

Gallery



Telephone: +34 637 87 73 78

Email: info@banusimmo.com

La Reserva Del Alcuzcuz, La Azalia 1 -1B, 29679, Benahavis

Banus Immo
MARBELLA

Property Description

Location: Nueva Andalucía, Costa del Sol, Spain
SPECTACULAR VILLA PROJECT ON LARGE PLOT!!!

Very attractive project of a grand villa to be developed in Atalaya de Rio Verde, a tranquil residential area close to Puerto Banus. The neighbourhood stands out for its important villas, large gardens, its neatly kept streets and privacy.

All spaces in this house will be an extra large size yet withholding the feel of a friendly family house with details of rustic design integrated with modernity.

The emphasis is put on large floor to ceiling windows and doors to allow fusion with the exterior.

Two large bedroom suites are the commanding spaces on upper floor, the master suite having two spacious his/hers walk-in closets and additional to the master bathroom an additional WC area.

Special rolling shutters on the bedroom windows allow the regulation of light income.

The ground floor offers two well defined areas, the Eastern wing containing three bedroom suites and the Western wing that holds the huge kitchen including a family lounge and a secondary service kitchen. The linking bridge of these areas is the main living room with replace. The several covered terrace areas around the house allow comfortable sitting/dining outdoor spaces.

Additional Info

For Sale	Beds: 6	Baths: 7
Type: Villa (Detached)	Area: 2260 sq m	Land Area: 3663 sq m
Garden	Pool	Setting: Close To Golf
Close To Port	Close To Shops	Close To Sea
Close To Town	Close To Schools	Condition: Excellent
New Construction	Pool: Private	Indoor
Heated	Climate Control: Air Conditioning	Pre Installed A/C
Hot A/C	Cold A/C	U/F Heating
Views: Panoramic	Garden	Covered Terrace
Lift	Fitted Wardrobes	Near Transport
Private Terrace	Solarium	WiFi
Gym	Sauna	Games Room
Storage Room	Utility Room	Jacuzzi
Double Glazing	Kitchen: Fully Fitted	Garden: Private
Security: Alarm System	Parking: Underground	More Than One

Private

Utilities: Electricity

Drinkable Water

Telephone

Category: Luxury

Off Plan

Contemporary

Built Area : 2260 sq m

Land Size : 3663 sq m

Telephone: +34 637 87 73 78

Email: info@banusimmo.com

La Reserva Del Alcuzcuz, La Azalia 1 -1B, 29679, Benahavis

Banus Immo
MARBELLA