



3 Bed Penthouse For Sale

€1,200,000

Puerto Banús, Costa del Sol

Ref: R4583332

Luxurious 3-Bedroom Beachfront Apartment for Sale in Playas del Duque, Puerto Banus Nestled in the heart of the coveted Playas del Duque, this exquisite 3-bedroom apartment invites you to experience the epitome of coastal living. Boasting a prime location just steps away from the sun-kissed sands of the beach of Puerto Banus. Key Features: Three Bedrooms Terrace-Transformed Kitchen Elegant Living Spaces Beachside Convenience Location: Playas del Duque is renowned for its upscale lifestyle, offering proximity to fine dining, upscale shopping, and a plethora of recreational activities. Schedule a viewing today and let the waves become the soundtrack to your new life.

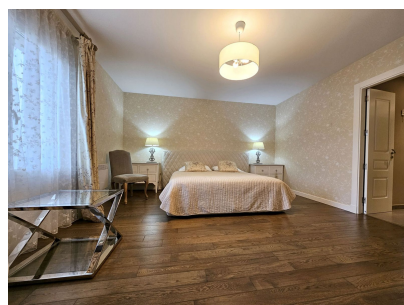
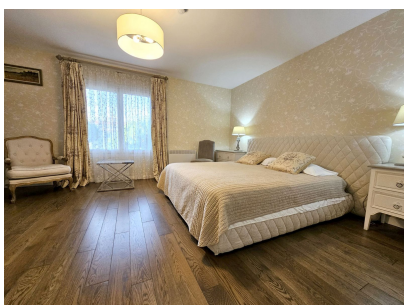
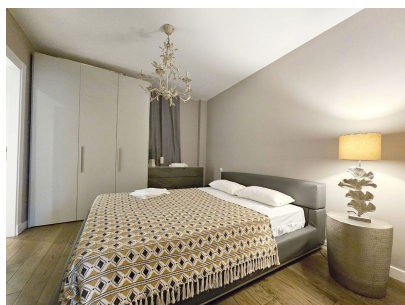
Telephone: +34 637 87 73 78

Email: info@banusimmo.com

La Reserva Del Alczucuz, La Azalia 1 -1B, 29679, Benahavis

BanusImmo
MARBELLA

Gallery



Telephone: +34 637 87 73 78

Email: info@banusimmo.com

La Reserva Del Alcuarcz, La Azalia 1 -1B, 29679, Benahavis

Banus Immo
MARBELLA

Property Description

Location: Puerto Banús, Costa del Sol, Spain

Luxurious 3-Bedroom Beachfront Apartment for Sale in Playas del Duque, Puerto Banus

Nestled in the heart of the coveted Playas del Duque, this exquisite 3-bedroom apartment invites you to experience the epitome of coastal living. Boasting a prime location just steps away from the sun-kissed sands of the beach of Puerto Banus.

Key Features:

Three Bedrooms

Terrace-Transformed Kitchen

Elegant Living Spaces

Beachside Convenience

Location: Playas del Duque is renowned for its upscale lifestyle, offering proximity to fine dining, upscale shopping, and a plethora of recreational activities.

Schedule a viewing today and let the waves become the soundtrack to your new life.

Telephone: +34 637 87 73 78

Email: info@banusimmo.com

La Reserva Del Alcuarczuz, La Azalia 1 -1B, 29679, Benahavis

BanusImmo[®]
MARBELLA

Additional Info

For Sale	Beds: 3	Baths: 2
Type: Penthouse	Area: 160 sq m	Garden
Pool	Setting: Beachside	Close To Port
Close To Sea	Close To Town	Orientation: West
Condition: Excellent	Recently Renovated	Pool: Communal
Climate Control: Air Conditioning	Views: Sea	Double Glazing
Kitchen: Fully Fitted	Garden: Communal	Security: Gated Complex
24 Hour Security	Parking: Underground	Built Area : 160 sq m