

4 Bed Penthouse To Rent

€2,500/mth.

Nueva Andalucía, Costa del Sol

Ref: R4450747

LOCATION, LOCATION, LOCATION! This immaculately presented PENTHOUSE located minutes away from the famous PUERTO BANUS its luxury beaches, shops, bars & restaurants. This property IS A MUST VISIT and its WOW FACTOR HAS TO BE THE INCREDIBLE ROOF TOP POOL with SUN DRENCHED ROOF TOP TERRACES WITH INCREDIBLE MOUNTAIN AND SEA VIEWS. Its MODERN kitchen with a spacious OPEN PLAN living/dining area is great for entertaining and from the moment you step inside! The bedrooms are INTIMATE and COSY a great space to chill out in. The bathrooms are modern and spacious. Your apartment has a GORGEOUS SOUTH FACING TERRACE TO ENJOY THE SUMMER AND WINTER SUN. You could say that Nueva Andalucía starts at the bullring and stretches across the lakes, countryside and plenty of golf courses, against a jaw-dro...

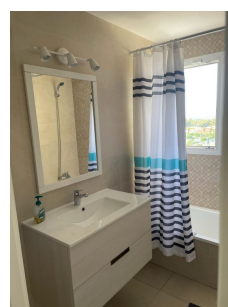
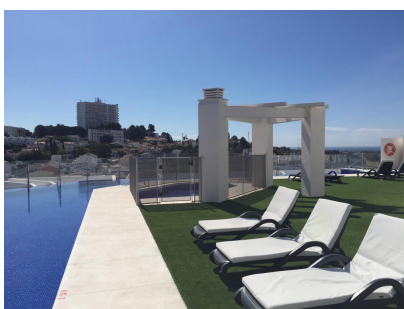
Telephone: +34 637 87 73 78

Email: info@banusimmo.com

La Reserva Del Alczucz, La Azalia 1 -1B, 29679, Benahavis

Banus Immo
MARBELLA

Gallery



Telephone: +34 637 87 73 78

Email: info@banusimmo.com

La Reserva Del Alczuz, La Azalia 1 -1B, 29679, Benahavis

BanusImmo
MARBELLA

Property Description

Location: Nueva Andalucía, Costa del Sol, Spain

LOCATION, LOCATION, LOCATION! This immaculately presented PENTHOUSE located minutes away from the famous PUERTO BANUS its luxury beaches, shops, bars & restaurants. This property IS A MUST VISIT and its WOW FACTOR HAS TO BE THE INCREDIBLE ROOF TOP POOL with SUN DRENCHED ROOF TOP TERRACES WITH INCREDIBLE MOUNTAIN AND SEA VIEWS. Its MODERN kitchen with a spacious OPEN PLAN living/dining area is great for entertaining and from the moment you step inside! The bedrooms are INTIMATE and COSY a great space to chill out in. The bathrooms are modern and spacious. Your apartment has a GORGEOUS SOUTH FACING TERRACE TO ENJOY THE SUMMER AND WINTER SUN.

You could say that Nueva Andalucía starts at the bullring and stretches across the lakes, countryside and plenty of golf courses, against a jaw-dropping backdrop of mountains and gorgeous views across the coast, spanning as far as Morocco. Apart from its close proximity to Puerto Banús, its lovely 'village' feel has made it such a desirable residential area. The land was originally used for bull breeding and bull fighting before it was developed into residential suburbs by Jose Banus, the businessman responsible for creating the marina. As its name suggests it's designed to emulate a traditional Andaluz village with a mixture of villas and apartments. It is an extremely popular area, particularly attracting golfers, holiday makers and families due local amenities.

Telephone: +34 637 87 73 78

Email: info@banusimmo.com

La Reserva Del Alcuazcuz, La Azalia 1 -1B, 29679, Benahavis

Banus Immo
MARBELLA

Additional Info

For Rent	Beds: 4	Baths: 2
Type: Penthouse	Area: 220 sq m	Land Area: 150 sq m
Garden	Pool	Setting: Close To Schools
Orientation: South West	Condition: Good	Pool: Communal
Climate Control: Air Conditioning	Views: Mountain	Near Transport
Ensuite Bathroom	Furniture: Fully Furnished	Garden: Communal
Security: Alarm System	24 Hour Security	Parking: Private
Built Area : 220 sq m	Land Size : 150 sq m	