



3 Bed Penthouse For Sale

€499,000

La Mairena, Costa del Sol

Ref: R4445044

Nestled in the serene and tranquil enclave of La Mairena, this remarkable penthouse is a true gem of the south coast. Offering a captivating panorama of the Mediterranean Sea, extending all the way to the iconic profiles of Gibraltar and Africa, this exceptional property promises a slice of paradise. With its south-facing orientation, this penthouse is privileged to receive an abundance of natural light and sunshine, blessing its inhabitants from dawn till dusk. The uninterrupted views of the sea are complemented by the occasional passage of ships, adding to the enchantment of this location. Finding a property with such an optimal south-facing aspect is indeed a rare treasure, making this penthouse truly extraordinary. Situated just a short 2-minute drive from a delightful selection of r...

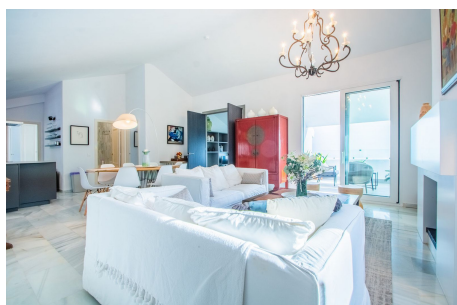
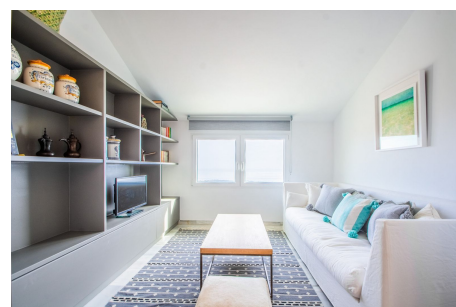
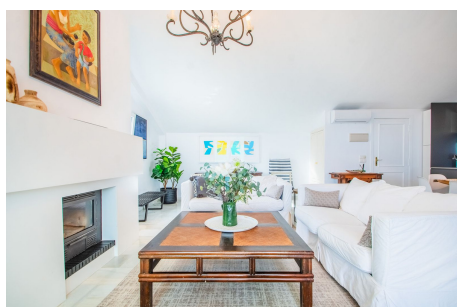
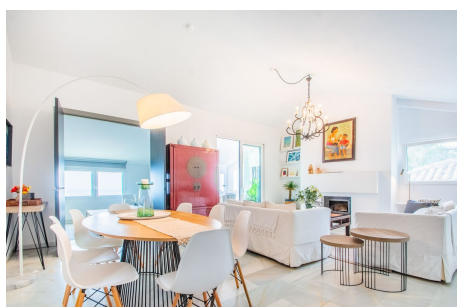
Telephone: +34 637 87 73 78

Email: info@banusimmo.com

La Reserva Del Alczucz, La Azalia 1 -1B, 29679, Benahavis

Banus Immo
MARBELLA

Gallery



Telephone: +34 637 87 73 78

Email: info@banusimmo.com

La Reserva Del Alcuizcuz, La Azalia 1 -1B, 29679, Benahavis

BanusImmo
MARBELLA

Property Description

Location: La Mairena, Costa del Sol, Spain

Nestled in the serene and tranquil enclave of La Mairena, this remarkable penthouse is a true gem of the south coast. Offering a captivating panorama of the Mediterranean Sea, extending all the way to the iconic profiles of Gibraltar and Africa, this exceptional property promises a slice of paradise.

With its south-facing orientation, this penthouse is privileged to receive an abundance of natural light and sunshine, blessing its inhabitants from dawn till dusk. The uninterrupted views of the sea are complemented by the occasional passage of ships, adding to the enchantment of this location. Finding a property with such an optimal south-facing aspect is indeed a rare treasure, making this penthouse truly extraordinary.

Situated just a short 2-minute drive from a delightful selection of restaurants and a mere 10-minute journey to the beautiful coastal surroundings, this penthouse effortlessly combines the tranquility of the mountains with the vibrancy of the coast. Whether you seek a permanent residence for your family or a serene holiday retreat, this property caters to diverse lifestyles and preferences.

The penthouse features a double-height ceiling, imparting a sense of grandeur and spaciousness. It has been tastefully refurbished, ensuring that it boasts modern amenities and comforts, harmoniously blending contemporary living with the enchantment of its natural surroundings. In summary, this south-facing penthouse in La Mairena is a unique, sun-soaked haven with breathtaking vistas, offering an idyllic retreat for those seeking the best of both mountain and coastal living.

Additional Info

For Sale	Beds: 3	Baths: 2
Type: Penthouse	Area: 140 sq m	Garden
Pool	Setting: Suburban	Mountain Pueblo
Close To Golf	Close To Town	Close To Schools
Close To Forest	Urbanisation	Orientation: South
Condition: Excellent	Pool: Communal	Climate Control: Air Conditioning
Hot A/C	Cold A/C	Views: Sea
Mountain	Panoramic	Pool
Forest	Covered Terrace	Fitted Wardrobes
Private Terrace	WiFi	Storage Room
Utility Room	Marble Flooring	Barbeque
Double Glazing	Fiber Optic	Furniture: Optional
Kitchen: Fully Fitted	Garden: Private	Security: Gated Complex
Parking: Communal	Category: Luxury	Resale

Telephone: +34 637 87 73 78

Email: info@banusimmo.com

La Reserva Del Alcuazcuz, La Azalia 1 -1B, 29679, Benahavis

Banus Immo
MARBELLA