

## 6 Bed Villa (Detached) For Sale

€5,500,000

Benahavís, Costa del Sol

Ref: R4392847

Situated in one of the most exclusive and luxury areas of Spain, you can find this magnificent 6 bed 6 bath villa set on a flat plot (3000 m<sup>2</sup>, built inside 712 m<sup>2</sup>) and top of the hill at the gated community of Los Almendros within the municipality of Benahavis. Overlooking the Los Arqueros golf course the house is offering unparalleled views of the Mediterranean coastline and Andalucian mountains. Just a 10 min drive from the prestigious Puerto Banus, where you can indulge in upscale shopping, fine dining and beach activities. The entrance with roundabout and a fountain can easily fit several cars underneath the semi-covered porch but there's also a large garage for another 4 vehicles. The property which was delivered in 2020 is distributed over 3 levels (with marble and parquet floors),...

Telephone: +34 637 87 73 78

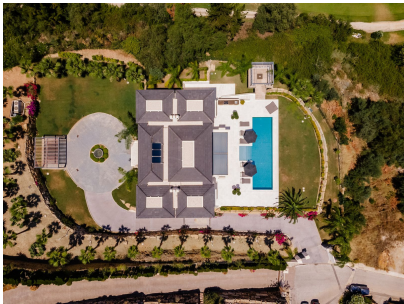
Email: [info@banusimmo.com](mailto:info@banusimmo.com)

La Reserva Del Alczucz, La Azalia 1 -1B, 29679, Benahavis

*BanusImmo*  
MARBELLA



# Gallery



# Property Description

**Location:** Benahavís, Costa del Sol, Spain

Situated in one of the most exclusive and luxury areas of Spain, you can find this magnificent 6 bed 6 bath villa set on a flat plot (3000 m<sup>2</sup>, built inside 712 m<sup>2</sup>) and top of the hill at the gated community of Los Almendros within the municipality of Benahavis. Overlooking the Los Arqueros golf course the house is offering unparalleled views of the Mediterranean coastline and Andalucian mountains. Just a 10 min drive from the prestigious Puerto Banus, where you can indulge in upscale shopping, fine dining and beach activities.

The entrance with roundabout and a fountain can easily fit several cars underneath the semi-covered porch but there's also a large garage for another 4 vehicles. The property which was delivered in 2020 is distributed over 3 levels (with marble and parquet floors), defined as a basement with the garage, storage room, sauna, Turkish bath, gym with Technogym equipment and staff accommodation including kitchenette and ensuite bathroom.

The groundfloor is offering a spacious entrance, formal dining room incl. wine cellar, an open-plan kitchen with Gaggenau appliances, intimate living room with beautiful high ceilings and two spacious en suite bedrooms. The large sliding glass windows give rise to open terrace spaces, the outside bbq area and the 17m long heated swimming pool.

The elevator is giving access to every floor and brings us to the top floor that hosts the 65 m<sup>2</sup> extensive master suite with a spacious ensuite bathroom, dressing room and a private balcony for breathtaking sunrises and sea views. Also set on this level, from the open gallery with views on the groundfloor, there's a professional pool table and you can enter two more en suite (guest) bedrooms.

This exceptional mansion including its amenities, style and distribution is made for peaceful enjoyment as well as entertaining your family, friends or guests in the very finest contemporary Mediterranean setting.

# Additional Info

For Sale	Beds: 6	Baths: 7
Type: Villa (Detached)	Area: 857 sq m	Land Area: 3000 sq m
Garden	Pool	Setting: Frontline Golf
Close To Golf	Close To Town	Close To Schools
Close To Forest	Urbanisation	Orientation: East
South East	South	South West
Condition: Excellent	Pool: Private	Heated
Climate Control: Air Conditioning	Hot A/C	Cold A/C
Fireplace	U/F Heating	U/F/H Bathrooms
Views: Sea	Mountain	Golf
Panoramic	Garden	Pool
Covered Terrace	Lift	Fitted Wardrobes
Private Terrace	WiFi	Gym
Sauna	Games Room	Guest Apartment
Storage Room	Utility Room	Ensuite Bathroom

Access for people with reduced mobility	Marble Flooring	Double Glazing
Staff Accommodation	Basement	Fiber Optic
Furniture: Fully Furnished	Kitchen: Fully Fitted	Garden: Private
Landscaped	Security: Gated Complex	Entry Phone
Alarm System	Safe	Parking: Garage
More Than One	Private	Utilities: Electricity
Drinkable Water	Category: Golf	Holiday Homes
Investment	Luxury	Resale
Contemporary	Built Area : 857 sq m	Land Size : 3000 sq m

Telephone: +34 637 87 73 78

Email: [info@banusimmo.com](mailto:info@banusimmo.com)

La Reserva Del Alcuzcuz, La Azalia 1 -1B, 29679, Benahavis