



2 Bed Apartment To Rent

€1,350/mth.

Bahía de Marbella, Costa del Sol

Ref: R3608102

BRIGHT & SPACIOUS BEACHSIDE 2 BED SOUTH FACING GARDEN APARTMENT, IN BAHIA DE MARBELLA, EAST MARBELLA - Available now (May 2020) - WALKING DISTANCE TO THE BEST BEACHES OF EAST MARBELLA This beautiful bright & spacious apartment is walking distance to the best beaches of east Marbella, & only 5 minutes drive from Marbella centre. It has a wonderful large terrace & private garden, south-facing, so that all-day sunshine can be enjoyed. The property is 160m² build plus 75m² of open terrace / garden. It is distributed as follows: Two bedrooms with two bathrooms 'ensuite' both with separate baths & shower cubicle. Spacious kitchen with utility room. Spacious 40m² living / dining room, leading out to a 25m² glazed terrace, and a further open terrace / garden of 75m²....

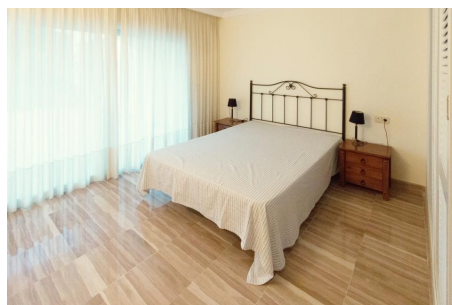
Telephone: +34 637 87 73 78

Email: info@banusimmo.com

La Reserva Del Alucuzcuz, La Azalia 1 -1B, 29679, Benahavis

Banus Immo
MARBELLA

Gallery



Telephone: +34 637 87 73 78

Email: info@banusimmo.com

La Reserva Del Alcuzeuz, La Azalia 1 -1B, 29679, Benahavis

Banus Immo
MARBELLA

Property Description

Location: Bahía de Marbella, Costa del Sol, Spain

BRIGHT & SPACIOUS BEACHSIDE 2 BED SOUTH FACING GARDEN APARTMENT, IN BAHIA DE MARBELLA, EAST MARBELLA - Available now (May 2020) - WALKING DISTANCE TO THE BEST BEACHES OF EAST MARBELLA

This beautiful bright & spacious apartment is walking distance to the best beaches of east Marbella, & only 5 minutes drive from Marbella centre. It has a wonderful large terrace & private garden, south-facing, so that all-day sunshine can be enjoyed.

The property is 160m² build plus 75m² of open terrace / garden.

It is distributed as follows:

Two bedrooms with two bathrooms 'ensuite' both with separate baths & shower cubicle.

Spacious kitchen with utility room.

Spacious 40m² living / dining room, leading out to a 25m² glazed terrace, and a further open terrace / garden of 75m².

There is also a guest toilet.

South orientation.

Underground parking space.

Storage room.

RENTED FULLY FURNISHED OR UNFURNISHED / PART-FURNISHED - some furniture can be stored in the storage room

Additional Info

For Rent	Beds: 2	Baths: 2
Type: Apartment	Area: 235 sq m	Pool
Setting: Beachside	Urbanisation	Orientation: South
Condition: Excellent	Pool: Communal	Climate Control: Air Conditioning
Lift	Furniture: Fully Furnished	Part Furnished
Not Furnished	Optional	Kitchen: Fully Fitted
Built Area : 235 sq m		