



2 Bed Villa (Detached) For Sale

€420,000

Estepona, Costa del Sol

Ref: R3012671

Extraordinary detached country villa located only 5 minutes driving to the city of Estepona. South facing with sea and mountain views, this property is very private and has a high rental potential. If you are looking for a rural setting and love the countryside, this is definitely the house for you. The property is only about 5 minutes from Estepona town and its leisure areas. It has two bedrooms, one bathroom, a full equipped kitchen, a good sized living room with fireplace and large parking area with space for some cars. In very good condition. Large plot of land with space for a swimming pool. Must be seen.

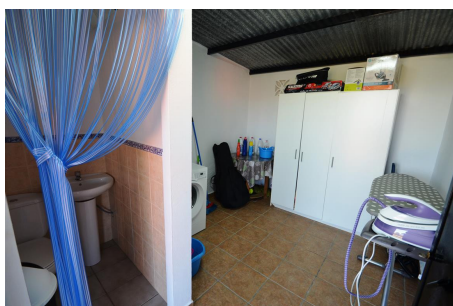
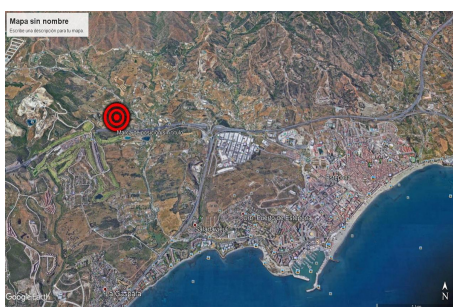
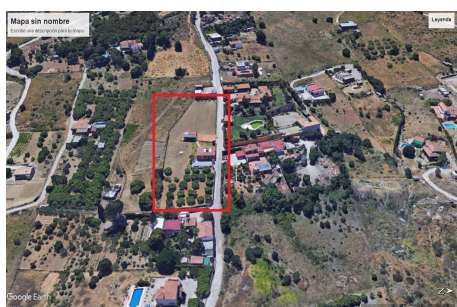
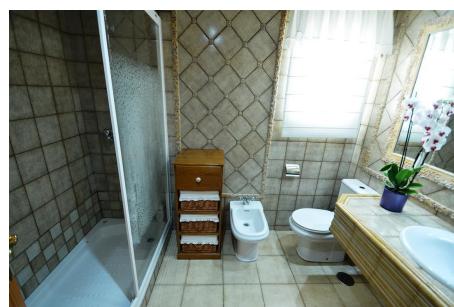
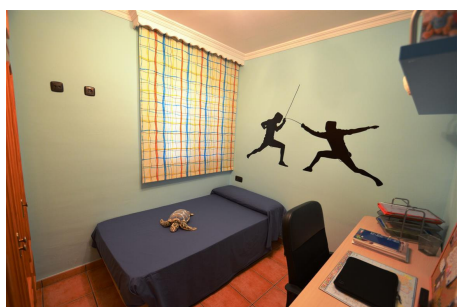
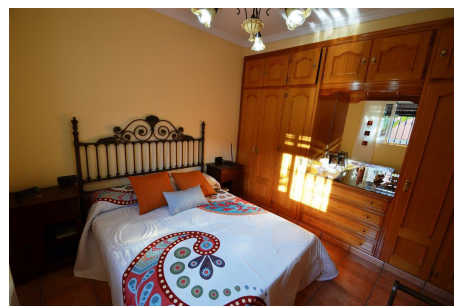
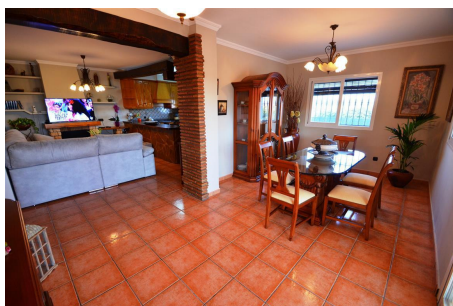
Telephone: +34 637 87 73 78

Email: info@banusimmo.com

La Reserva Del Alucuzcuz, La Azalia 1 -1B, 29679, Benahavis

BanusImmo
MARBELLA

Gallery



Telephone: +34 637 87 73 78

Email: info@banusimmo.com

La Reserva Del Alcuzcuz, La Azalia 1 -1B, 29679, Benahavis

Banus Immo
MARBELLA

Property Description

Location: Estepona, Costa del Sol, Spain

Extraordinary detached country villa located only 5 minutes driving to the city of Estepona. South facing with sea and mountain views, this property is very private and has a high rental potential. If you are looking for a rural setting and love the countryside, this is definitely the house for you. The property is only about 5 minutes from Estepona town and its leisure areas. It has two bedrooms, one bathroom, a full equipped kitchen, a good sized living room with fireplace and large parking area with space for some cars. In very good condition. Large plot of land with space for a swimming pool. Must be seen.

Telephone: +34 637 87 73 78

Email: info@banusimmo.com

La Reserva Del Alczucz, La Azalia 1 -1B, 29679, Benahavis

Banus Immo[®]
MARBELLA

Additional Info

For Sale	Beds: 2	Baths: 1
Type: Villa (Detached)	Area: 190 sq m	Land Area: 4400 sq m
Garden	Setting: Close To Port	Close To Shops
Close To Sea	Close To Town	Close To Schools
Close To Marina	Orientation: South	Condition: Excellent
Pool: Room For Pool	Climate Control: Air Conditioning	Hot A/C
Cold A/C	Views: Sea	Mountain
Panoramic	Garden	Covered Terrace
Fitted Wardrobes	Private Terrace	Solarium
Guest Apartment	Storage Room	Utility Room
Marble Flooring	Barbeque	Double Glazing
Furniture: Optional	Kitchen: Partially Fitted	Garden: Private
Parking: More Than One	Private	Utilities: Electricity
Drinkable Water	Category: Resale	Built Area : 190 sq m

Telephone: +34 637 87 73 78

Email: info@banusimmo.com

La Reserva Del Alcuzczuz, La Azalia 1 -1B, 29679, Benahavis

BanusImmo
MARBELLA