



3 Bed Penthouse For Sale

€500,000

Aloha, Costa del Sol

Ref: R4316767

Duplex Penthouse for sale in Aloha, Marbella with 3 bedrooms, 3 bathrooms, 3 en suite bathrooms, 1 toilet and with orientation south, with communal swimming pool, communal garage and communal garden. Regarding property dimensions, it has 190 m² built, 160 m² interior and 80 m² terrace. Has the following facilities air conditioning, fully fitted kitchen, fireplace, satellite tv, storage room, alarm, security service 24h, telephone, private terrace, sea view, country view, mountain view, internet - wi-fi, electric blinds, gated community, pool view, close to sea / beach, close to golf, excellent condition, close to shops, close to town, close to port and close to schools.

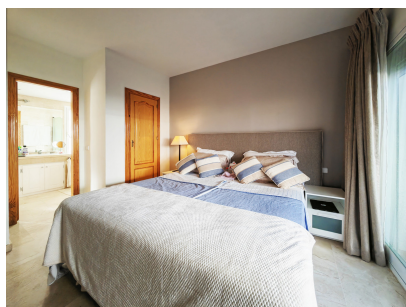
Telephone: +34 637 87 73 78

Email: info@banusimmo.com

La Reserva Del Alczucuz, La Azalia 1 -1B, 29679, Benahavis

BanusImmo
MARBELLA

Gallery



Telephone: +34 637 87 73 78

Email: info@banusimmo.com

La Reserva Del Alczuz, La Azalia 1 -1B, 29679, Benahavis

Banus Immo
MARBELLA

Property Description

Location: Aloha, Costa del Sol, Spain

Duplex Penthouse for sale in Aloha, Marbella with 3 bedrooms, 3 bathrooms, 3 en suite bathrooms, 1 toilet and with orientation south, with communal swimming pool, communal garage and communal garden. Regarding property dimensions, it has 190 m² built, 160 m² interior and 80 m² terrace. Has the following facilities air conditioning, fully fitted kitchen, fireplace, satellite tv, storage room, alarm, security service 24h, telephone, private terrace, sea view, country view, mountain view, internet - wi-fi, electric blinds, gated community, pool view, close to sea / beach, close to golf, excellent condition, close to shops, close to town, close to port and close to schools.

Telephone: +34 637 87 73 78

Email: info@banusimmo.com

La Reserva Del Alcuzcuz, La Azalia 1 -1B, 29679, Benahavis

Banus Immo[®]
MARBELLA

Additional Info

For Sale	Beds: 3	Baths: 3.5
Type: Penthouse	Area: 270 sq m	Garden
Pool	Setting: Close To Golf	Close To Port
Close To Shops	Close To Sea	Close To Town
Close To Schools	Orientation: South	Condition: Excellent
Pool: Communal	Climate Control: Air Conditioning	Fireplace
Views: Sea	Mountain	Country
Pool	Private Terrace	Satellite TV
Storage Room	Ensuite Bathroom	Kitchen: Fully Fitted
Garden: Communal	Security: Electric Blinds	Alarm System
24 Hour Security	Parking: Communal	Utilities: Telephone
Built Area : 270 sq m		

Telephone: +34 637 87 73 78

Email: info@banusimmo.com

La Reserva Del Alcuzcuz, La Azalia 1 -1B, 29679, Benahavis

BanusImmo
MARBELLA