



## 3 Bed Penthouse For Sale

**€975,000**

**Estepona, Costa del Sol**

**Ref: R4301752**

Spacious Penthouse with panoramic views The penthouse is part of a new development of just 34 apartments in 5 Blocks. Uniquely the penthouse and 200sqm terrace take over the whole of the top, 2nd floor giving great privacy. It is the only apartment serviced by the lift to the 2nd floor. The terrace is perfect for outdoor living with open and shaded areas and a barbecue. The apartment is newly constructed using high quality materials. There are electronically controlled awnings for sunshade and rain. Concertina mosquito netting in all rooms and bathrooms. Electronic external window shutters for all rooms. The interior living areas are beautifully designed by Ambience Design Company. The fitted kitchen comes with a large kitchen island as it's centerpiece. There is air conditioning a...

Telephone: +34 637 87 73 78

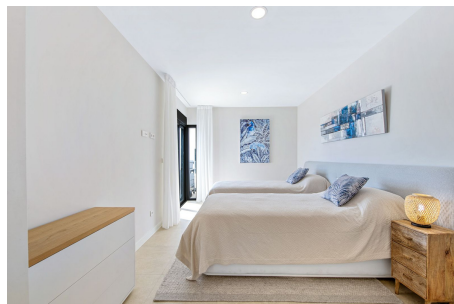
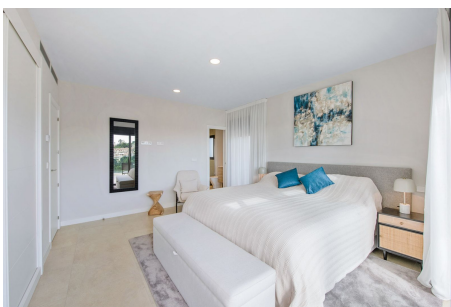
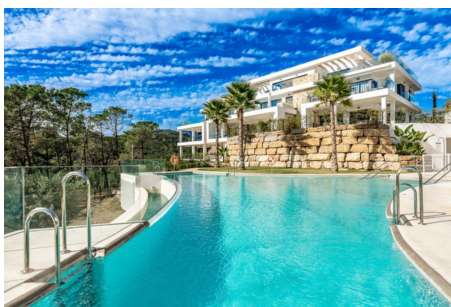
Email: [info@banusimmo.com](mailto:info@banusimmo.com)

La Reserva Del Alcuzcuz, La Azalia 1 -1B, 29679, Benahavis

*Banus Immo*  
MARBELLA



# Gallery



Telephone: +34 637 87 73 78

Email: [info@banusimmo.com](mailto:info@banusimmo.com)

La Reserva Del Alcuizcuz, La Azalia 1 -1B, 29679, Benahavis

*BanusImmo*  
MARBELLA

# Property Description

**Location:** Estepona, Costa del Sol, Spain

Spacious Penthouse with panoramic views

The penthouse is part of a new development of just 34 apartments in 5 Blocks. Uniquely the penthouse and 200sqm terrace take over the whole of the top, 2nd floor giving great privacy. It is the only apartment serviced by the lift to the 2nd floor. The terrace is perfect for outdoor living with open and shaded areas and a barbecue. The apartment is newly constructed using high quality materials. There are electronically controlled awnings for sunshade and rain. Concertina mosquito netting in all rooms and bathrooms. Electronic external window shutters for all rooms.

The interior living areas are beautifully designed by Ambience Design Company. The fitted kitchen comes with a large kitchen island as it's centerpiece. There is air conditioning and zonal control underfloor heating.

Nature is maximally integrated, and while the 'main' orientation is both south and west, the views to the north of the mountains from the back of the terrace is also stunning. Open views with much greenery and trees down to the coast with exquisite views of the African coastal mountains on clear days and sunset lit evenings.

Double car parking space and extra large storage area in basement. A large infinity pool with view of the Mediterranean completes this stunning property.

Located in a privileged area, halfway between Estepona and Marbella. You can have easy access to prestigious golf courts, gyms, tennis and padel courts, the exotic and spectacular Selwo Park, beach clubs with live music, restaurants with Michelin stars, private clinics and a new American School ATLAS. The new Laguna Beach is only 3 minutes by car.

Good for shopping in Marbella and Estepona in large shopping areas or superstores like Carrefour only 5 min by car or Aldi and Lidl even closer. Estepona's coast occupies a stretch of 20 kilometers between Puerto Banus and Sotogrande, two of the most important Mediterranean marinas. Malaga International airport is less than an hour drive and Gibraltar Airport 30 minutes away. Puerto Banus and Marbella are 20 minutes away by car.

# Additional Info

For Sale	Beds: 3	Baths: 3
Type: Penthouse	Area: 305 sq m	Garden
Pool	Setting: Country	Close To Forest
Urbanisation	Orientation: South	South West
West	Condition: Excellent	Pool: Communal
Climate Control: Air Conditioning	U/F Heating	Views: Sea
Mountain	Country	Panoramic
Garden	Pool	Forest
Lift	Fitted Wardrobes	Private Terrace
Solarium	Satellite TV	Storage Room
Barbeque	Domotics	Fiber Optic
Furniture: Part Furnished	Optional	Kitchen: Fully Fitted
Garden: Communal	Security: Gated Complex	Electric Blinds
Parking: Underground	Communal	Category: Bargain
Golf	Holiday Homes	Investment

Luxury

Resale

Contemporary

Built Area : 305 sq m

Telephone: +34 637 87 73 78

Email: [info@banusimmo.com](mailto:info@banusimmo.com)

La Reserva Del Alcuzcuz, La Azalia 1 -1B, 29679, Benahavis

*BanusImmo*<sup>®</sup>  
MARBELLA